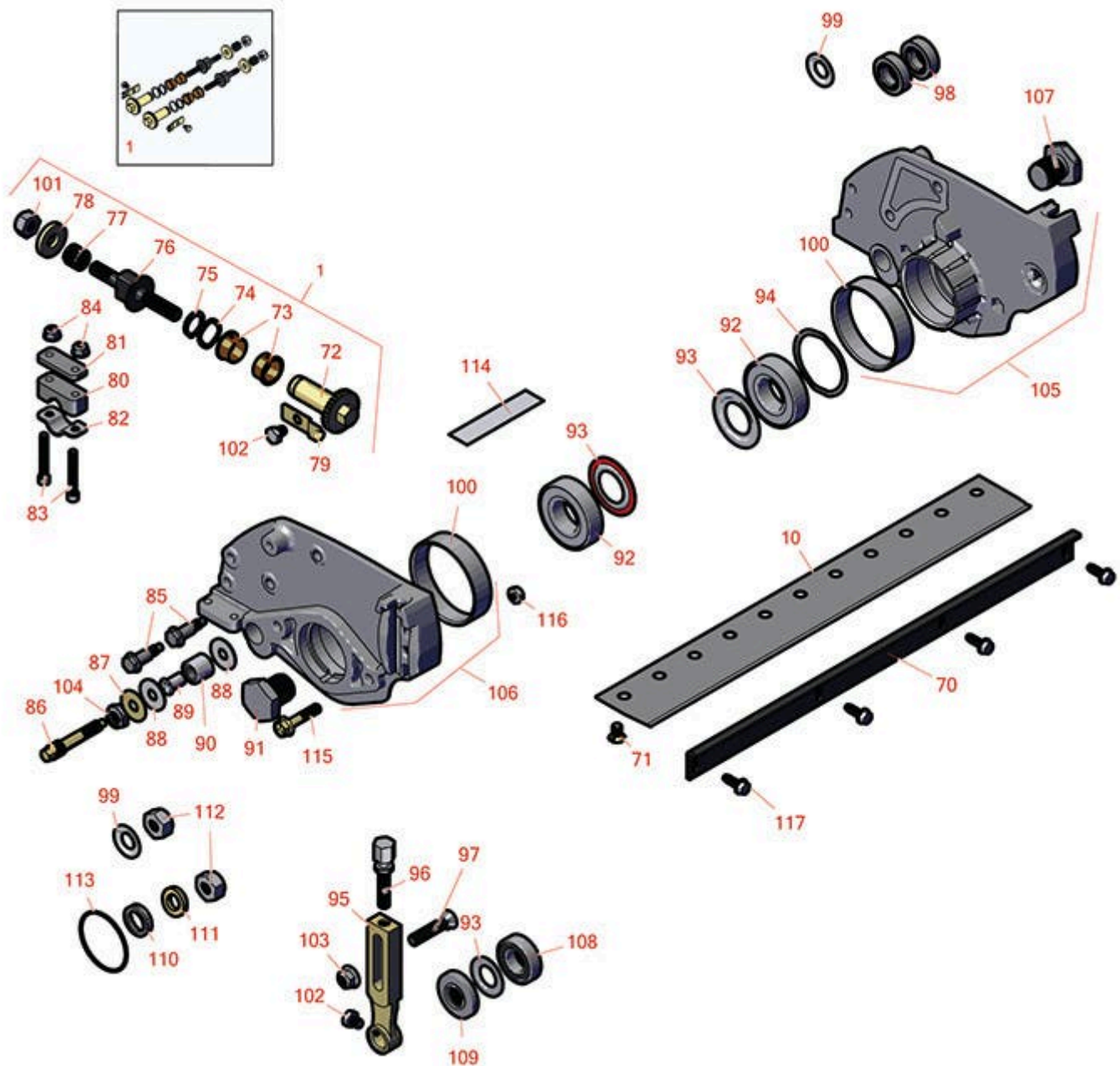




Replaces Toro Greensmaster Flex 1018

Parts

Cutting Unit - Model 04853 & 04854
Reel & Bedknife



All original equipment manufacturers names and part numbers are used for identification purposes only, and we are in no way implying that our products are original equipment parts. Prices subject to change without notice.



Replaces Toro Greensmaster Flex 1018 Parts

Cutting Unit - Model 04853 & 04854
Reel & Bedknife



Item No	R&R Part No.	OEM Part No.	Description	Qty Req	Order Quantity
---------	--------------	--------------	-------------	---------	----------------

Overhaul Kits and Service Tools

1	R121-2637	121-2637	Overhaul Kit - DPA Adjusters	1	
---	-----------	----------	------------------------------	---	--

R&R Bedknives, Lifetime Guaranteed

10	R110-2300	110-2300	Bedknife - Micro Cut Extended .062 - .187 HOC	1	
----	-----------	----------	---	---	--

Detail Description: R&R Bedknives are manufactured from high carbon-boron alloy steel and then hardened to RC46-49 to match the temper of our reel blades and original equipment reels. Bedknives are surface ground on the top and front edge and straightened three times before being packaged with oil for rust prevention. All R&R Bedknives now have an increased front edge grind for added life. All R&R Bedknives are guaranteed against defects in material and workmanship under normal use for the life of the part.:

10	R98-7261	98-7261	Bedknife - Micro Cut .062 - .187 HOC	1	
----	----------	---------	--------------------------------------	---	--

Detail Description: R&R Bedknives are manufactured from high carbon-boron alloy steel and then hardened to RC46-49 to match the temper of our reel blades and original equipment reels. Bedknives are surface ground on the top and front edge and straightened three times before being packaged with oil for rust prevention. All R&R Bedknives now have an increased front edge grind for added life. All R&R Bedknives are guaranteed against defects in material and workmanship under normal use for the life of the part.:

10	R98-7260	98-7260, 98-7260-05	Bedknife - Tournament .125 - .500 HOC	1	
----	----------	------------------------	---------------------------------------	---	--

Detail Description: R&R Bedknives are manufactured from high carbon-boron alloy steel and then hardened to RC46-49 to match the temper of our reel blades and original equipment reels. Bedknives are surface ground on the top and front edge and straightened three times before being packaged with oil for rust prevention. All R&R Bedknives now have an increased front edge grind for added life. All R&R Bedknives are guaranteed against defects in material and workmanship under normal use for the life of the part.:

10	R110-2301	110-2301	Bedknife - Low Cut .187 - 1.00 HOC	1	
----	-----------	----------	------------------------------------	---	--

Detail Description: R&R Bedknives are manufactured from high carbon-boron alloy steel and then hardened to RC46-49 to match the temper of our reel blades and original equipment reels. Bedknives are surface ground on the top and front edge and straightened three times before being packaged with oil for rust prevention. All R&R Bedknives now have an increased front edge grind for added life. All R&R Bedknives are guaranteed against defects in material and workmanship under normal use for the life of the part.:

All original equipment manufacturers names and part numbers are used for identification purposes only, and we are in no way implying that our products are original equipment parts. Prices subject to change without notice.



Replaces Toro Greensmaster Flex 1018 Parts

Cutting Unit - Model 04853 & 04854
Reel & Bedknife



Item No	R&R Part No.	OEM Part No.	Description	Qty Req	Order Quantity
---------	--------------	--------------	-------------	---------	----------------

R&R Razor Tool Steel, Lifetime Guaranteed

10	R117-1530	117-1530	Bedknife - Razor Tool Steel - 18 Micro Cut .062 - .187 HOC	1	
----	------------------	----------	--	---	--

Detail Description: R&R Razor bedknives are manufactured from premium alloy tool steel steel and then hardened to RC48-51 to match the temper of our Razor reel blades and original equipment premium series reels. Bedknives are surface ground on the top and front edge and specially packaged for rust prevention. All R&R Bedknives now have an increased front edge grind for added life. All R&R Bedknives are guaranteed against defects in material and workmanship under normal use for the life of the part. You can expect up to double the life over standard bedknives.:

10	R117-1532	117-1532	Bedknife - Razor Tool Steel - Tournament .125 - .500 HOC	1	
----	------------------	----------	--	---	--

Detail Description: R&R Razor bedknives are manufactured from premium alloy tool steel steel and then hardened to RC48-51 to match the temper of our Razor reel blades and original equipment premium series reels. Bedknives are surface ground on the top and front edge and specially packaged for rust prevention. All R&R Bedknives now have an increased front edge grind for added life. All R&R Bedknives are guaranteed against defects in material and workmanship under normal use for the life of the part. You can expect up to double the life over standard bedknives.:

10	R139-4319	139-4319	Bedknife - Razor Tool Steel - Tournament Short	1	
----	------------------	----------	--	---	--

10	R139-4318	139-4318	Bedknife - Razor Tool Steel - Micro Short	1	
----	------------------	----------	---	---	--

Other Parts Available

70	R119-4066-03	119-4066-03	Cutoff Bar	1	
----	---------------------	-------------	------------	---	--

71	R119-4151	119-4151	Screw - Bedknife 5/16-18 x 17/32	11	
----	------------------	----------	----------------------------------	----	--

72	R106-5363	106-5363	Shaft - Adjusting - Bed Bar - Stainless	2	
----	------------------	----------	---	---	--

73	R106-5344	106-5344	Bushing - Flanged and Keyed	4	
----	------------------	----------	-----------------------------	---	--

74	R119-4164	119-4164	Washer - Wave	2	
----	------------------	----------	---------------	---	--

75	R32120-93	32120-93	Snap Ring - HD	2	
----	------------------	----------	----------------	---	--

All original equipment manufacturers names and part numbers are used for identification purposes only, and we are in no way implying that our products are original equipment parts. Prices subject to change without notice.



Replaces Toro Greensmaster Flex 1018 Parts

Cutting Unit - Model 04853 & 04854
Reel & Bedknife



Item No	R&R Part No.	OEM Part No.	Description	Qty Req	Order Quantity
76	R115-7039	115-7039	Screw - Adjuster - Bedbar	2	
76	R137-6130	137-6130	Screw - Adjuster - Hardened - Bedbar	2	
77	R119-4156	119-4156	Spring - Compression	2	
78	R119-4155	119-4155	Washer - Hardened	2	
79	R99-2097	99-2097	Detent - Bed Bar Adjuster	2	
80	R105-5710	105-5710, 119-4166	Spacer - Roller	2	
81	R105-5711	105-5711, 119-4165	Shim - Roller	2	
82	R105-5712	105-5712, 119-4157	Retainer - Roller	2	
83	R119-4035	119-4035	Bolt - 1/4-20 x 1 3/4 Soc HD Cap Scr	4	
84	R119-4040	119-4040	Nut - 1/4-20 Fl Locknut	4	
85	R115-7042	115-7042	Bolt-Shoulder, Flange	4	
86	R117-9493	117-9493	Bolt - Bed Bar - Hardened	2	
87	R52-2860	119-4150, 52-2860	Washer - Bed Bar Pivot	2	
88	R52-2900	52-2900	Washer - Nylon	4	
89	R52-2890	52-2890	Bushing - Flanged	2	
90	R119-4153	119-4153	Bushing - Rubber	2	
91	R115-7263	115-7263	Bolt - Bearing Lock	1	
92	R115-3296	115-3296	Bearing	2	
92	R140-5510	140-5510	Bearing - Sealed Stainless	2	

All original equipment manufacturers names and part numbers are used for identification purposes only, and we are in no way implying that our products are original equipment parts. Prices subject to change without notice.



Replaces Toro Greensmaster Flex 1018 Parts

Cutting Unit - Model 04853 & 04854
Reel & Bedknife



Item No	R&R Part No.	OEM Part No.	Description	Qty Req	Order Quantity
93	R115-3299	115-3299	Seal- Flocked	2	
93	R115-5604	115-5604	Washer - Flocked Seal	2	
94	R105-5700	105-5700, 115-5258	Wave Washer - Bearing	1	
95	R115-7041	115-7041	Bracket - Front Roller 5 1/4 in	2	
96	R110-7352	110-7352	Screw - HOC 2 5/8 Stainless	2	
97	R99-3773	99-3773	Bolt- Plow 3/8-16 x 1 3/4	2	
98	R115-6869	115-6869	Bearing - Ball -Stainless	2	
99	R115-6923	115-6923	Shield - Bearing - Flocked	1	
100	R117-6619	117-6619	Bushing	2	
101	R3296-48	119-4039, 32146-7, 3296-34, 3296-48	Locknut - 7/16-14 ESNA	2	
102	R114-9396	114-9396, 119-4067	Bolt - Hex HD 5/16-18 x 3/8	4	
103	R104-8301	104-8301, 104-9301, 109-6658, 133-7570	Locknut - 3/8-16 Nylon Flanged	2	
104	R3296-28	119-4154, 140-9234, 32127-34, 32128-7, 32128-8, 32136-7, 3296-28	Nut - 1/2-20 ESNA Jam	2	
105	R119-4005	119-4005	Side Plate Assy-LH Incl R117-6619	1	

All original equipment manufacturers names and part numbers are used for identification purposes only, and we are in no way implying that our products are original equipment parts. Prices subject to change without notice.



Replaces Toro Greensmaster Flex 1018 Parts

Cutting Unit - Model 04853 & 04854
Reel & Bedknife



Item No	R&R Part No.	OEM Part No.	Description	Qty Req	Order Quantity
106	R119-4007	119-4007	Side Plate Assy-RH Incl R117-6619	1	
107	R139-7383	139-7383	Nut - Reel - LH Thread	1	
108	R117-6831	117-6831	Bearing - Stainless	2	
109	R117-9080	117-9080	Locknut - Stainless with Nyloc	2	
110	R138-1549	138-1549	Seal	1	
111	R133-9155	133-9155	Spacer - Pulley - Reel	2	
112	R3296-25	30-3380, 32127-21, 32127-31, 3290-160, 3290-33, 3296-13, 3296-25, 3296-45, 329645	Locknut - 1/2-13 Heavy ESNA	2	
113	R360-0398	360-0398	O-Ring	1	
114	R137-9706	137-9706	Decal- Warning	1	
115	R115-1794	115-1794	Bolt - Hx HD Fl 5/16-18 x 1 1/2	2	
116	R3296-29	1-804256, 3290-357, 3296-29, 915662P	Locknut - 5/16-18 ESNA	2	
116	R32153-3	119-4038, 22-12-AJFD, 32127-35, 32146-5, 32153-3, 3296-18, 3296-29, 3296-31, N/A	Locknut - 5/16-18 ESNA Zinc	2	

All original equipment manufacturers names and part numbers are used for identification purposes only, and we are in no way implying that our products are original equipment parts. Prices subject to change without notice.



Replaces Toro Greensmaster Flex 1018 Parts

*Cutting Unit - Model 04853 & 04854
Reel & Bedknife*



Item No	R&R Part No.	OEM Part No.	Description	Qty Req	Order Quantity
117	R131-6150	131-6150	Screw- 1/4-20 x 3/4 Hx Wh Thread Forming	4	

All original equipment manufacturers names and part numbers are used for identification purposes only, and we are in no way implying that our products are original equipment parts. Prices subject to change without notice.