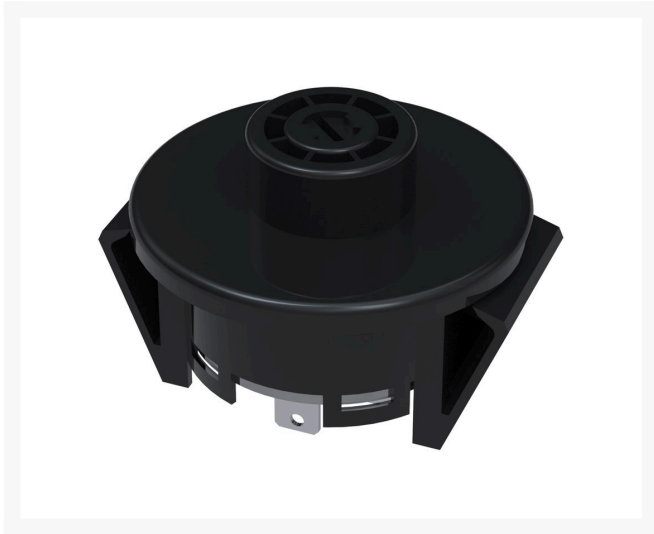
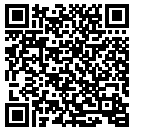




Ignition Switch

R137-4100



Replaces

Exmark	117-2221, 137-4100
R&R Products	R117-2221
Toro	117-2221, 137-4100

Specifications

Manufacturer	R&R Products
--------------	--------------

Fits Models

- Exmark Lazer Z E-Series
- Exmark Lazer Z Propane
- Exmark Lazer Z S-Series
- Exmark Lazer Z X-Series
- Exmark Navigator
- Toro Commercial Walk Behind
- Toro Z Master 2000
- Toro Z Master Commercial 3000
- Toro Z Master Professional 6000
- Toro Z Master Professional 7000
- Exmark Pioneer S-Series
- Exmark Quest SP Series
- Toro TimeCutter 4200
- Toro TimeCutter 4200C
- Toro TimeCutter 4225
- Toro TimeCutter 4275C
- Toro TimeCutter 5000
- Toro TimeCutter 5000C
- Toro TimeCutter 6000
- Toro TimeCutter MX 4275
- Toro TimeCutter MX 5000
- Toro TimeCutter MX 5075
- Toro TimeCutter MX 5475
- Toro Titan 5400C
- Toro Titan MR 4800
- Toro Titan MR 5400
- Toro Titan MX 4800
- Toro Titan MX 4880

Japan Equipment

123 Main St. Apartment 12 Tokyo, 100-0001
987-456-3210

<https://japan.rrproducts.com/>



Ignition Switch

R137-4100



- Toro Titan MX 5400
- Toro Titan MX 5480
- Toro Titan MX 6000
- Toro Titan MX 6080
- Toro Titan MyRide
- Toro Titan ZX 4800
- Toro Titan ZX 4820
- Toro Titan ZX 5400
- Toro Titan ZX 5420
- Toro Titan ZX 6000
- Toro Titan ZX 6020
- Toro Z Master Professional 8000
- Toro TimeCutter MX 4260
- Toro TimeCutter MX 5060
- Toro TimeCutter SS 4200
- Toro TimeCutter SS 4235
- Toro TimeCutter SS 4260
- Toro TimeCutter SS 5000
- Toro TimeCutter SS 5035
- Toro TimeCutter SS 5060
- Toro TimeCutter ZS 4200
- Toro TimeCutter ZS 4200TF
- Toro TimeCutter ZS 5000
- Toro TimeCutter ZS 5000TF
- Exmark Quest Drive Series
- Exmark Radius E-Series
- Exmark Radius S-Series
- Exmark Radius X-Series
- Toro TimeCutter SS 3200
- Toro TimeCutter SS 3216
- Toro TimeCutter SS 3225
- Toro TimeCutter ZS 3200
- Toro TimeCutter ZS 3200S
- Toro Z400 Z Master
- Toro Z500 Z Master

Japan Equipment

123 Main St. Apartment 12 Tokyo, 100-0001
987-456-3210

<https://japan.rrproducts.com/>