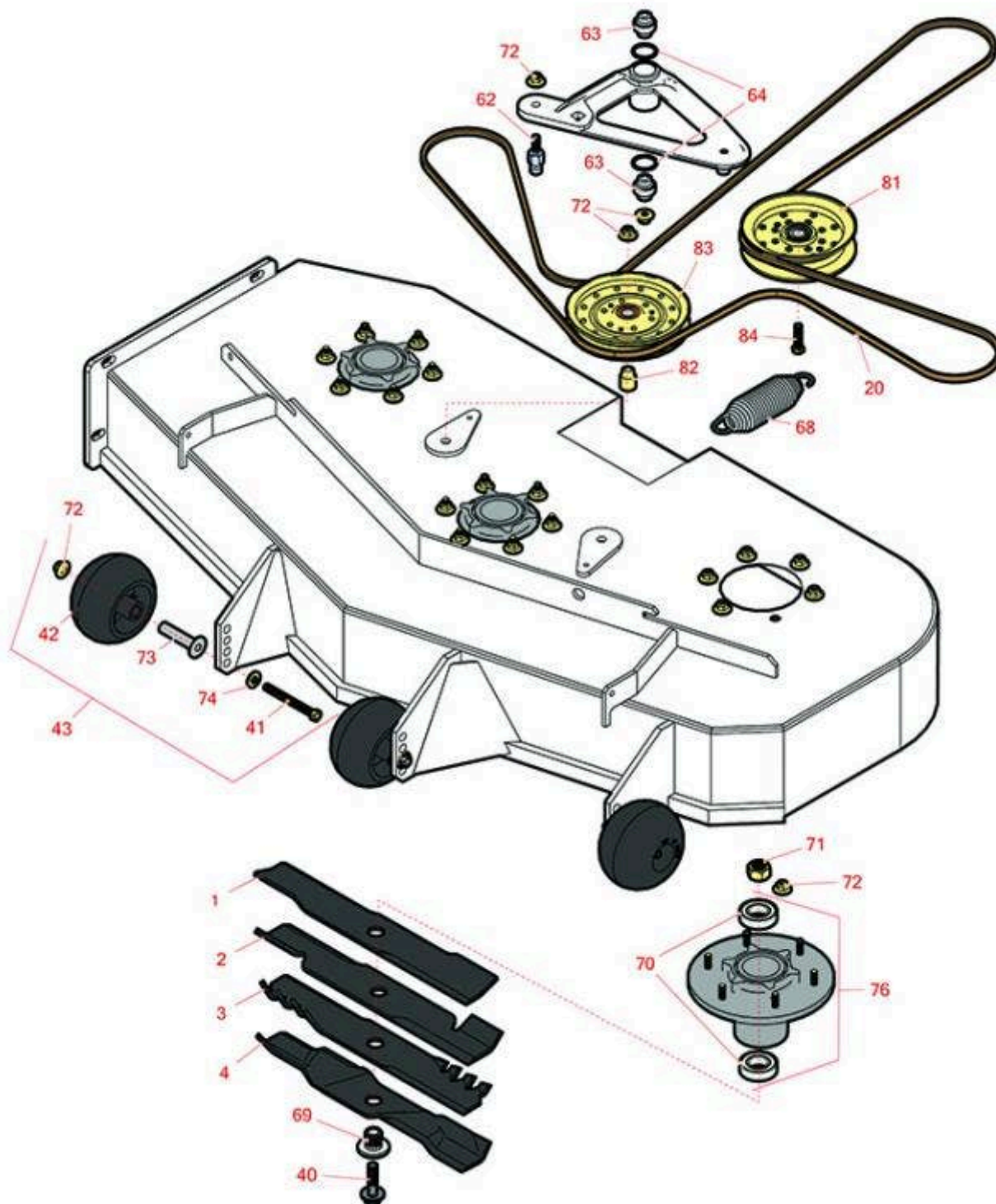




Replaces Exmark Lazer Z E-Series Parts

Zero-Turn Mower with 48in Deck - Models LZE651CKA484A2,
LZE651GKA484A2 & LZE600GKA484A2

48in Deck



All original equipment manufacturers names and part numbers are used for identification purposes only, and we are in no way implying that our products are original equipment parts. Prices subject to change without notice.



Replaces Exmark Lazer Z E-Series Parts

Zero-Turn Mower with 48in Deck - Models LZE651CKA484A2,
LZE651GKA484A2 & LZE600GKA484A2
48in Deck



Item No	R&R Part No.	OEM Part No.	Description	Qty Req	Order Quantity
Blades					
1	R103-6386	103-6386	Mower Blade - 16-1/4 Low Lift	3	
2	R103-6401	103-6401	Mower Blade- Notched 16 1/4	3	
2	RRB3062-1601	103-6401, 103-6401-S	Mower Blade - High-Lift 16.25 x 2.5in x 15/16 Mt Hole	3	
<i>Detail Description: R&R Products rotary blades are manufactured in the USA with superior alloy steel and hardened for extended life. Lifetime guaranteed against defects in material and workmanship.:</i>					
3	RRB4062-1601	116-5177, 116-5177-S	Mower Blade - Mulcher 16.25 x 2.5in x 15/16 Mt Hole	3	
4	RRB5360-1608	103-6391, 103-6391-S	Mower Blade - Wave Mulcher 16.25 x 2.5in x 15/16 Mt Hole	3	
Belts					
20	R109-8070	109-8070	Belt- V	1	
Other parts					
40	R109-9220	109-9220	Bolt - Sems 1/2-20	3	
41	R116-9362	116-9362	Bolt - Hex HD 3/8-16 x 3 3/4 GR8 YZ	3	
42	R103-8415	103-8415	Roller - Anti Scalp	3	
43	R116-9981	116-9981	Kit - Anti-Scalp Roller	3	
62	R126-0423	126-0423	Pin - Spring - Anchor	1	
63	R103-3504	103-3504	Bearing - Spherical	2	
64	R106-7159	106-7159	O-Ring	2	
68	R116-6317	116-0133, 116-6317	Spring - Extension	1	

All original equipment manufacturers names and part numbers are used for identification purposes only, and we are in no way implying that our products are original equipment parts. Prices subject to change without notice.



Replaces Exmark Lazer Z E-Series Parts

Zero-Turn Mower with 48in Deck - Models LZE651CKA484A2,
LZE651GKA484A2 & LZE600GKA484A2
48in Deck



Item No	R&R Part No.	OEM Part No.	Description	Qty Req	Order Quantity
69	R103-3037	103-3037	Splined Bushing	3	
70	R116-0720	116-0720	Bearing - Ball - Special Triple Seal	6	
71	R116-7306	116-7306	Hex Nut - 3/4-16 with Nyloc	3	
72	R104-8301	104-8301, 109-6658	Locknut - 3/8-16 Nylon Flanged	31	
73	R116-8131	116-8131	Axle - Roller	3	
74	R98-5975	98-5975	Washer - Belleville	3	
76	R116-3344	116-3344	Spindle Housing Assy	3	
81	R126-9196	126-9196	Idler Pulley - Flat	1	
82	R1-633456	1-633456	Bushing - Idler	2	
83	R116-4667	116-4667, 126-7685	Idler -Pulley - Flat	2	
84	R323-8	323-8	Bolt - Hex HD 3/8-16 x 1-1/2 GR8	1	

All original equipment manufacturers names and part numbers are used for identification purposes only, and we are in no way implying that our products are original equipment parts. Prices subject to change without notice.