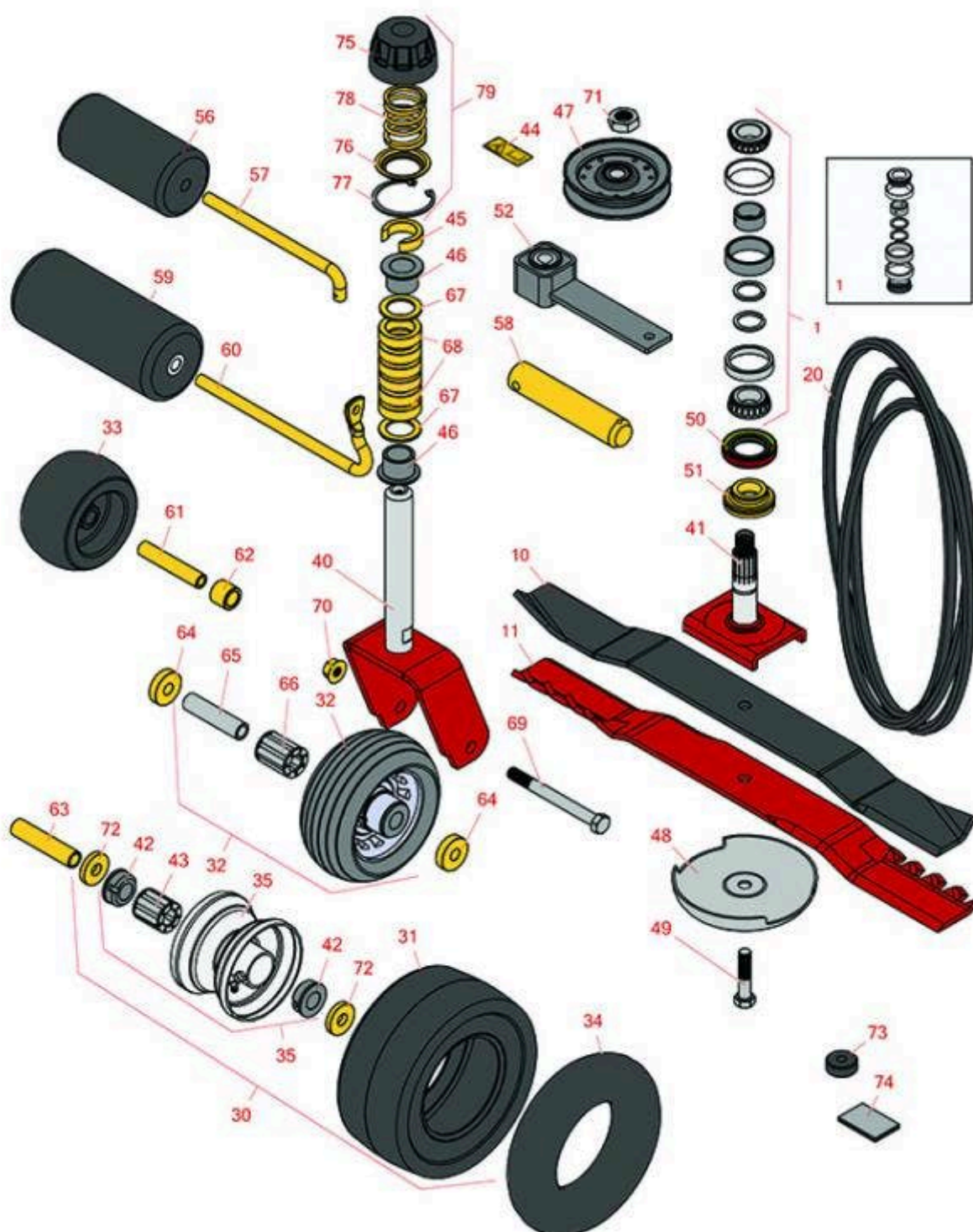




# Replaces Toro Groundsmaster 228-D Parts

Rotary Mower - Models 2WD 30241 & 4WD 30242  
72in Rotary Deck - Model 30553



All original equipment manufacturers names and part numbers are used for identification purposes only, and we are in no way implying that our products are original equipment parts. Prices subject to change without notice.



# Replaces Toro Groundsmaster 228-D Parts

Rotary Mower - Models 2WD 30241 & 4WD 30242  
72in Rotary Deck - Model 30553



| Item No | R&R Part No. | OEM Part No. | Description | Qty Req | Order Quantity |
|---------|--------------|--------------|-------------|---------|----------------|
|---------|--------------|--------------|-------------|---------|----------------|

## Overhaul Kits

|   |                 |                     |                                  |   |  |
|---|-----------------|---------------------|----------------------------------|---|--|
| 1 | <b>R46-8530</b> | 27-0960,<br>46-8530 | Bearing - Set with Rings/Spacers | 1 |  |
|---|-----------------|---------------------|----------------------------------|---|--|

*Detail Description: Includes 2 ea: R254-72 Bearings, R254-94 Cones, Spacers & Rings:*

## Rotary Blades

|    |                     |                             |                             |   |  |
|----|---------------------|-----------------------------|-----------------------------|---|--|
| 10 | <b>R104-4569-03</b> | 104-1543-03,<br>104-4569-03 | Mower Blade - High Lift     | 3 |  |
| 11 | <b>R57-0250M</b>    | 104-1304                    | Mower Blade - Mulcher 24.75 | 3 |  |

*Detail Description: Mulching mower blades increase efficiency and productivity. The patented Faltor mulching "teeth" circulate cut grass back into the deck multiple times creating a finer cut and better looking turf.:*

## Belts

|    |                 |         |             |   |  |
|----|-----------------|---------|-------------|---|--|
| 20 | <b>R57-0240</b> | 57-0240 | Belt - Deck | 1 |  |
|----|-----------------|---------|-------------|---|--|

## Tires & Wheels

|    |                 |         |                                     |   |  |
|----|-----------------|---------|-------------------------------------|---|--|
| 30 | <b>R99-1268</b> | 99-1268 | Castor Wheel Assy 8x3.5-4<br>Smooth | 2 |  |
|----|-----------------|---------|-------------------------------------|---|--|

*Detail Description: Includes: R62-5580 Bearing & R62-5570 Bearing:*

|    |                 |                     |                                 |   |  |
|----|-----------------|---------------------|---------------------------------|---|--|
| 31 | <b>R93-9939</b> | 93-9939,<br>98-2877 | Tire - 8x3.50-4 (4 Ply) Sm Pneu | 1 |  |
|----|-----------------|---------------------|---------------------------------|---|--|

|    |                 |                                 |                          |   |  |
|----|-----------------|---------------------------------|--------------------------|---|--|
| 32 | <b>R63-8400</b> | 63-8400,<br>66-6440,<br>68-6850 | Wheel - Rear Caster Assy | 2 |  |
|----|-----------------|---------------------------------|--------------------------|---|--|

*Detail Description: Includes: R62-5580 Bearing, R302-5 Zerk, R63-1770 Spacer & R63-8580 Bearing:*

|    |                 |                      |                    |   |  |
|----|-----------------|----------------------|--------------------|---|--|
| 33 | <b>R68-2730</b> | 1-603299,<br>68-2730 | Wheel - Anti Scalp | 1 |  |
|----|-----------------|----------------------|--------------------|---|--|

|    |                  |          |                                 |   |  |
|----|------------------|----------|---------------------------------|---|--|
| 34 | <b>R100-5832</b> | 100-5832 | Tube - Castor Wheel 2.80/2.50-4 | 1 |  |
|----|------------------|----------|---------------------------------|---|--|

All original equipment manufacturers names and part numbers are used for identification purposes only, and we are in no way implying that our products are original equipment parts. Prices subject to change without notice.



# Replaces Toro Groundsmaster 228-D Parts

Rotary Mower - Models 2WD 30241 & 4WD 30242  
72in Rotary Deck - Model 30553



| Item No   | R&R Part No.       | OEM Part No.                                 | Description                  | Qty Req | Order Quantity |
|---|--------------------|--|------------------------------|---------|----------------|
| 35  | <b>R100-2348</b>   | 100-2348                                     | Rim Assy with Bearings       | 1       |                |
| <i>Detail Description: Includes 2ea R62-5580 Bearings &amp; 1 ea R62-5570 Bearing.:</i> |                    |  |                              |         |                |
| <b>Other Parts Available</b>  |                    |  |                              |         |                |
| 40  | <b>R98-7921-01</b> | 98-7921,<br>98-7921-01                       | Caster Fork - Front          | 4       |                |
| <i>Tech Note: Fits Front &amp; Rear:</i>  |                    |  |                              |         |                |
| 41  | <b>R27-0920</b>    | 27-0920                                      | Spindle - Splined - 4-5/8 in | 1       |                |
| 42  | <b>R62-5580</b>    | 62-5530,<br>62-5580                          | Bearing - Flanged - Caster   | 1       |                |
| 43  | <b>R62-5570</b>    | 62-5570                                      | Bearing - Castor Wheel       | 1       |                |
| 44  | <b>R93-6696</b>    | 93-6696                                      | Decal - Warning              | 2       |                |
| 45  | <b>R99-1283</b>    | 99-1283                                      | Spacer - Rear Castor Fork    | 12      |                |
| 46  | <b>R94-1291</b>    | 94-1291                                      | Bushing - Flanged            | 8       |                |
| 47  | <b>R65-5940</b>    | 65-5940                                      | Pulley - Idler               | 2       |                |
| 48  | <b>R72-9361</b>    | 27-1000,<br>27-1001,<br>72-9360,<br>72-9361  | Cup - Anti-Scalp             | 3       |                |
| 49  | <b>R92-5816</b>    | 92-5816                                      | Bolt - Hex HD 1/2-20 x 2-1/4 | 3       |                |
| 50  | <b>R253-139</b>    | 253-139                                      | Seal - Spindle               | 6       |                |
| 51  | <b>R27-0950</b>    | 27-0950                                      | Spacer - Bearing             | 3       |                |
| 52  | <b>R27-8580</b>    | 100-6178,<br>27-1060,<br>27-8580,<br>99-1297 | Socket - Idler               | 1       |                |
| 56  | <b>R36-1740</b>    | 36-1740                                      | Roller - Rotary Deck         | 2       |                |

All original equipment manufacturers names and part numbers are used for identification purposes only, and we are in no way implying that our products are original equipment parts. Prices subject to change without notice.



# Replaces Toro Groundsmaster 228-D Parts

Rotary Mower - Models 2WD 30241 & 4WD 30242  
72in Rotary Deck - Model 30553



| Item No | R&R Part No.     | OEM Part No.   | Description                    | Qty Req | Order Quantity |
|---------|------------------|--|--------------------------------|---------|----------------|
| 57      | <b>R40-0340</b>  | 40-0340  | Shaft - Rear Roller            | 2       |                |
| 58      | <b>R98-2330</b>  | 98-2330  | Pin - Pivot Assy               | 2       |                |
| 59      | <b>R68-6710</b>  | 68-6710  | Roller - Rotary Deck           | 1       |                |
| 60      | <b>R68-6840</b>  | 68-6840  | Shaft - Roller                 | 1       |                |
| 61      | <b>R98-7912</b>  | 98-7912  | Bushing - Spanner Wheel        | 1       |                |
| 62      | <b>R98-7913</b>  | 98-7913  | Spacer - Tube                  | 1       |                |
| 63      | <b>R68-8980</b>  | 68-8980  | Bushing - Spanner Wheel        | 2       |                |
| 64      | <b>R99-1291</b>  | 99-1291  | Spacer - Castor Fork           | 4       |                |
| 65      | <b>R63-1770</b>  | 63-1770  | Bushing - Spanner Rear         | 2       |                |
| 66      | <b>R63-8580</b>  | 63-8580  | Bearing - Roller - 1" Long     | 1       |                |
| 67      | <b>R3-6781</b>   | 3-6781   | Washer - Thrust - Castor Wheel | 8       |                |
| 68      | <b>R63-0070</b>  | 26-1580,<br>63-0070  | Spacer - 1/2 HOC               | 12      |                |
| 69      | <b>R325-19</b>   | 01-150-1450,<br>01-158-1260,<br>01-178-0840,<br>20-99-AGD,<br>325-19 | Bolt - Hex HD 1/2-13 x 5       | 4       |                |
| 70      | <b>R32128-23</b> | 32128-23,<br>3218-23,<br>99-5107                                     | Nut - Lock Hex Flanged 1/2-13  | 4       |                |
| 71      | <b>R444742</b>   | 32146-20,<br>9150906,<br>915090P                                     | Nut - 3/4-16 Gripco Centerlock | 1       |                |
| 72      | <b>R70-8040</b>  | 70-8040  | Washer                         | 4       |                |
| 73      | <b>R63-9750</b>  | 63-9750,<br>64-9750  | Mount - Rubber                 | 4       |                |

All original equipment manufacturers names and part numbers are used for identification purposes only, and we are in no way implying that our products are original equipment parts. Prices subject to change without notice.



## Replaces Toro Groundsmaster 228-D Parts

*Rotary Mower - Models 2WD 30241 & 4WD 30242  
72in Rotary Deck - Model 30553*



| Item No | R&R Part No.    | OEM Part No.        | Description          | Qty Req | Order Quantity |
|---------|-----------------|---------------------|----------------------|---------|----------------|
| 74      | <b>R74-0340</b> | 54-2700,<br>74-0340 | Cushion - Rubber     | 2       |                |
| 75      | <b>R92-8861</b> | 92-5582,<br>92-8861 | Cap - HOC            | 4       |                |
| 76      | <b>R92-5583</b> | 92-5583             | Washer- Cap          | 4       |                |
| 77      | <b>R92-5581</b> | 92-5581             | Ring - Retaining     | 4       |                |
| 78      | <b>R92-5584</b> | 92-5584             | Spring - Compression | 4       |                |
| 79      | <b>R92-8862</b> | 92-8862             | Cap Assy - HOC       | 4       |                |

All original equipment manufacturers names and part numbers are used for identification purposes only, and we are in no way implying that our products are original equipment parts. Prices subject to change without notice.