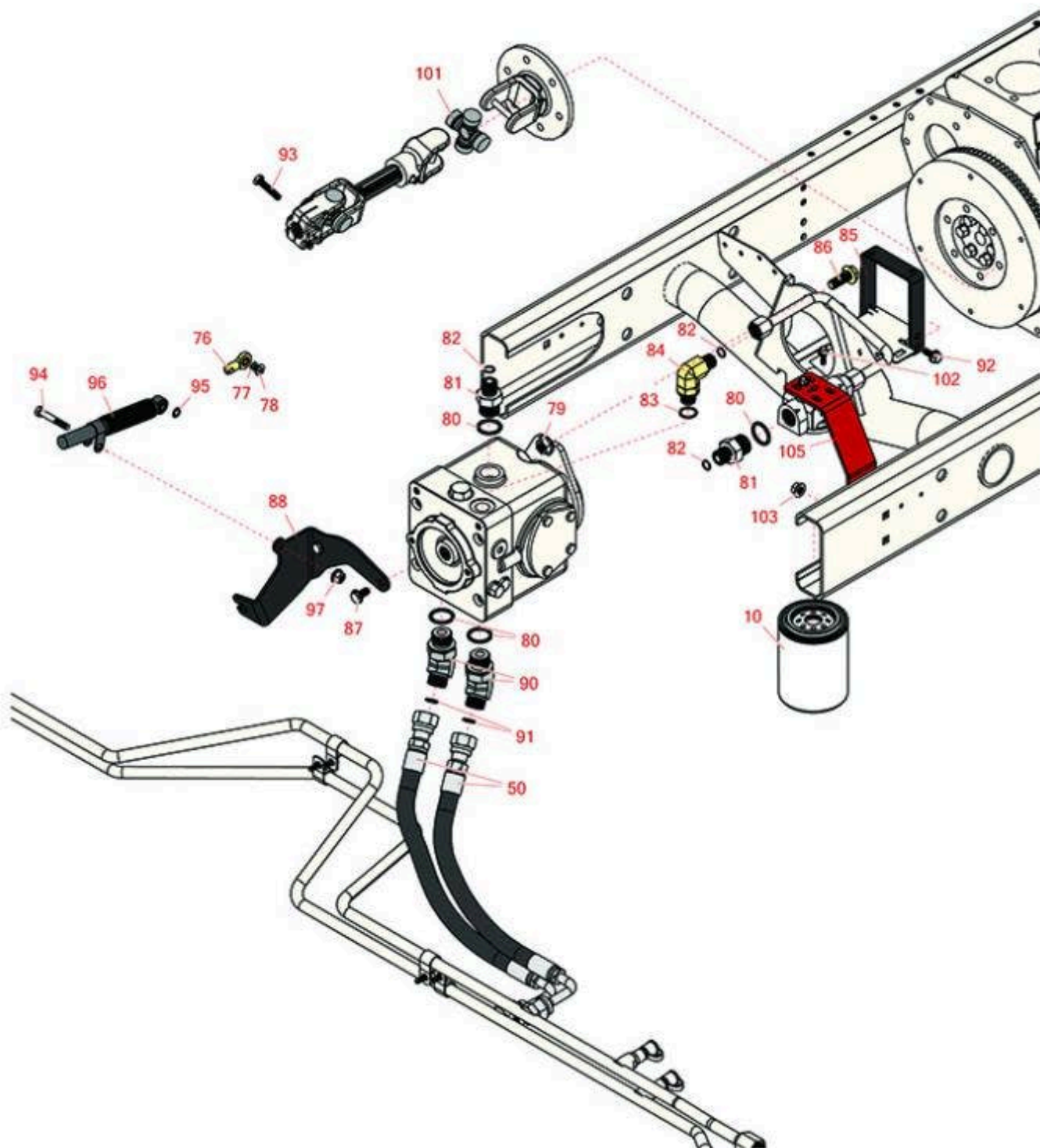




Replaces Toro Reelmaster 5510-D Parts

*Traction Unit with Yanmar Engine - Models
Driveshaft & Hydraulic Pump*



All original equipment manufacturers names and part numbers are used for identification purposes only, and we are in no way implying that our products are original equipment parts. Prices subject to change without notice.



Replaces Toro Reelmaster 5510-D Parts

*Traction Unit with Yanmar Engine - Models
Driveshaft & Hydraulic Pump*



Item No	R&R Part No.	OEM Part No.	Description	Qty Req	Order Quantity
---------	--------------	--------------	-------------	---------	----------------

Hoses

10	R86-3010	23-9740, 239470, 28-1370, 281370, 353-387, 353387, 54-0110, 540110, 76-6490, 86-3010, 863010, Dec-70	Baldwin Hydraulic Oil Filter	1	
----	----------	---	------------------------------	---	--

Filters

50	R108-1679	108-1679	Hydraulic Hose Assy	2	
----	-----------	----------	---------------------	---	--

Other Parts Available

76	R2411-41	2411-41	Rod End - Ball Joint	1	
77	R24M7139	24M7139, 3256-16, 33093-00, 43-5930	Washer - Flat 6mm	1	
78	R3256-22	24-9-BD, 3-1032, 3256-1, 3256-22, 93-0954, 93-0989	Washer - Flat 1/4 Yellow	1	
79	R32128-49	32128-49	Nut - 1/2-13 Hex Flange	2	
80	R237-81	237-81, 237.81, 327-81	O-Ring	2	
81	R100-4240	100-4240	No 8 Orfs Male x No 12 Orb Male	3	
82	R237-30	23-6320, 237-30	O-Ring - Seal	2	

All original equipment manufacturers names and part numbers are used for identification purposes only, and we are in no way implying that our products are original equipment parts. Prices subject to change without notice.



Replaces Toro Reelmaster 5510-D Parts

*Traction Unit with Yanmar Engine - Models
Driveshaft & Hydraulic Pump*



Item No	R&R Part No.	OEM Part No.	Description	Qty Req	Order Quantity
83	R237-80	237-80, 327-80	O-Ring	1	
84	R340-105	340-105	Hydraulic Fitting	1	
85	R108-1799-03	108-1799-03	Hoop-Guard	1	
86	R3234-38	3234-38	Bolt - Flanged Hex 1/2-13 x 1-1/4	2	
87	R3234-1	321-11, 3234-1	Bolt - Flanged Serrated Hex HD 3/8-16 x 3/4	2	
88	R110-5323-03	110-5323-03	Bracket	1	
90	R340-156	340-156	Hydraulic Fitting	2	
91	R237-65	237-65, 237.65	O-Ring	2	
92	R3234-5	3234-5, 62-3310	Bolt - 5/16-18x3/4 Hx Ser Was HD	2	
93	R19H3130	322-9, 3223-5	Bolt - Hex HD 5/16-18 x 1-3/4	2	
94	R322-10	20-30-AD, 24-7180, 322-10, 322-10 , 3223-6, 513347	Bolt - Hex HD 5/16-18 x 2	1	
95	R32151-72	32151-72	Ring-Retaining	1	
96	R76-8870	105-7280, 76-8870	Lever Damper Assy	1	
97	R104-8300	104-8300, 104-8300 , 119-4041	Locknut - 5/16-18 Flanged Y/Zinc	1	
101	R54-9180	54-9180, 99-6570	Kit - U-Joint	2	

All original equipment manufacturers names and part numbers are used for identification purposes only, and we are in no way implying that our products are original equipment parts. Prices subject to change without notice.



Replaces Toro Reelmaster 5510-D Parts

*Traction Unit with Yanmar Engine - Models
Driveshaft & Hydraulic Pump*



Item No	R&R Part No.	OEM Part No.	Description	Qty Req	Order Quantity
102	R3234-33	3234-33	Bolt - 1/4-20 x 3/4 Serr Hex Flanged	2	
103	R104-8301	104-8301, 104-9301, 109-6658, 133-7570	Locknut - 3/8-16 Nylon Flanged	2	
105	R110-0906-01	110-0906-01	Support -Oil Filter	1	

All original equipment manufacturers names and part numbers are used for identification purposes only, and we are in no way implying that our products are original equipment parts. Prices subject to change without notice.