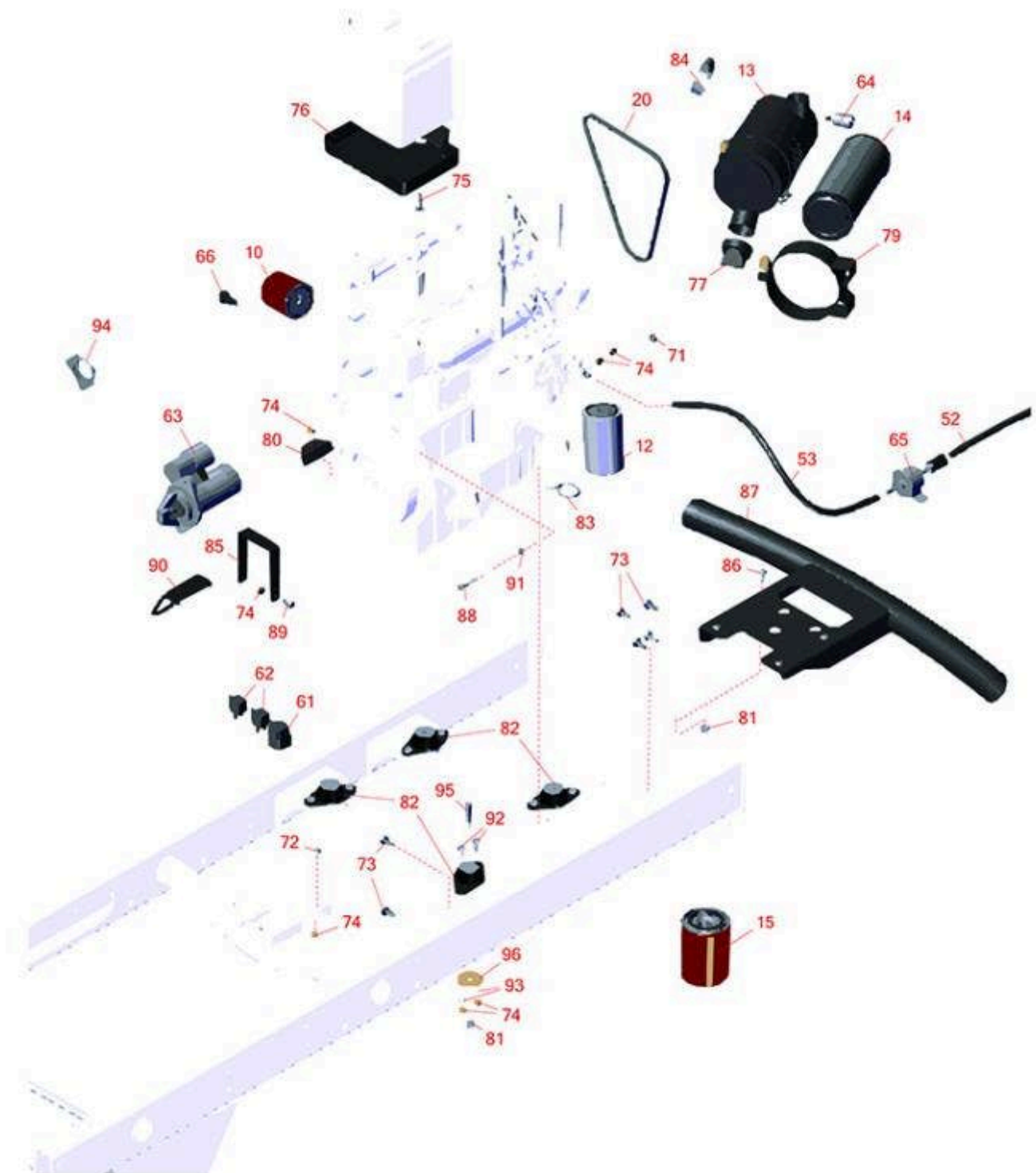




# Replaces Toro Reelmaster 5410-D Parts

*Traction Unit - with Yanmar Engine  
Rear Axle*



All original equipment manufacturers names and part numbers are used for identification purposes only, and we are in no way implying that our products are original equipment parts. Prices subject to change without notice.



# Replaces Toro Reelmaster 5410-D Parts

Traction Unit - with Yanmar Engine  
Rear Axle



Item No	R&R Part No.	OEM Part No.	Description	Qty Req	Order Quantity
---------	--------------	--------------	-------------	---------	----------------

## Overhaul Kits and Service Tools

1	<b>R110-6461</b>	110-6461	Seal Kit -Fits R107-4458 Cylinder	1	
1	<b>R114-8875</b>	114-8875	Seal Kit - Fits R110-9035 Cylinder	1	

## Tires

40	<b>RCT575315</b>	117-5125, 121-7924	Tire - 20x12.00-10 Nhs (4 Ply) Carlisle Turf Trac R/S	2	
----	------------------	-----------------------	--	---	--

*Detail Description: The Turf Trac R/S tire offers all-around best performance in our residential product line. Applications include grounds care equipment, zero turn mowers and utility vehicles.:*

40	<b>RCT511257</b>		Tire - 20x12.00-10 Nhs (4 Ply) Carlisle Turf Master	2	
----	------------------	--	--	---	--

*Detail Description: The Carlisle Turf Master tire is a professional-grade tire known for its durability, stability, and traction. With its contoured shoulder protection, deep tread lugs, and durable compound, the Turf Master tire delivers reliable performance for ZTRs and professional-grade mowers. Whether you're maintaining a large lawn or operating a commercial landscaping business, the Turf Master tire is designed to meet your high standards and exceed your expectations.:*

## Hoses

50	<b>R110-0973</b>	110-0973	Hose Asy	1	
51	<b>R110-0928</b>	110-0928	Hydraulic Hose Assy	1	

## Other Parts Available

70	<b>R107-4458</b>	107-4458, 110-9035	Hydraulic Cylinder	1	
71	<b>R340-132</b>	340-132	Hydraulic Fitting - 90 Deg	2	
72	<b>R237-22</b>	107-8844, 237-22, 237-78	O-Ring	2	

All original equipment manufacturers names and part numbers are used for identification purposes only, and we are in no way implying that our products are original equipment parts. Prices subject to change without notice.



# Replaces Toro Reelmaster 5410-D Parts

*Traction Unit - with Yanmar Engine  
Rear Axle*



Item No	R&R Part No.	OEM Part No.	Description	Qty Req	Order Quantity
73	R237-21	237-21, 327-21	O-Ring	2	
74	R302-5	21-6010, 302-11, 302-37, 302-47, 302-5, 302-57, 302-58, 302-6, 31-0300, 32-9660, 60-0800, 62-3880, 92-4181	Fitting - Grease	5	
75	R106-6895-03	106-6895-03, 69-9810, 69-9810-03	Ball Joint Assy	1	
76	R99-6964	99-6964	Bushing - Axle	2	
77	R99-8432	99-8432	Washer - Thrust	2	
78	R106-6774	106-6774, 92-5838, 92-5838-01	Ball Joint	1	
79	R302-40	302-13, 302-40	Fitting - Grease	1	
80	R32151-104	32151-104	Ring - Retaining, Ex	1	
81	R3234-1	321-11, 3234-1	Bolt - Flanged Serrated Hex HD 3/8-16 x 3/4	2	
82	R69-8890	69-8890	Cap-Spindle	2	
83	R32151-77	32151-77	Ring - Retaining	2	
84	R104-0015	104-0015, 104-8339	Bushing - Flanged	4	
85	R76-2980	76-2980	Washer - Thrust	2	

All original equipment manufacturers names and part numbers are used for identification purposes only, and we are in no way implying that our products are original equipment parts. Prices subject to change without notice.



## Replaces Toro Reelmaster 5410-D Parts

*Traction Unit - with Yanmar Engine  
Rear Axle*



Item No	R&R Part No.	OEM Part No.	Description	Qty Req	Order Quantity
86	<b>R3234-6</b>	32144-13, 3234-6, 3434-6	Bolt - Hex HD Flanged	14	
87	<b>R110-5297-03</b>	110-5297-03	Link - Drag LH	1	
88	<b>R110-5295-03</b>	110-5295-03	Link - Drag - RH	1	
89	<b>R105-7941</b>	105-7941	Nut - Hex - Slotted	3	
90	<b>R3272-12</b>	01-151-0090, 28-19-D, 3272-12	Pin - Cotter 1/8 x 1-1/4	5	
91	<b>R140-6101</b>	140-6101, 98-8173, 98-8173-03	Pivot Pin - Rear Lift Arm	1	
92	<b>R323016</b>	302-33, 323016	1/8"-NPT 90 Degree Grease Fitting	1	
93	<b>R444742</b>	32146-20, 9150906, 915090P	Nut - 3/4-16 Gripco Centerlock	1	
94	<b>R71-4540</b>	71-4540	Washer - Thrust	1	
95	<b>R32121-32</b>	01-153-0180, 32121-32	Pin - Roll 1/4 x 1-3/4	1	
96	<b>R443828</b>	01-191-1018, 3214, 3220-6, 443828, 915089P	Nut - 5/8-18 Hex	2	
97	<b>R107-4517-03</b>	107-4517-03	Housing - Motor	2	
98	<b>R117-8958</b>	117-8958	Spindle	2	
99	<b>R112-1690</b>	112-1690	Seal - Hub - 1 1/4" ID	2	

All original equipment manufacturers names and part numbers are used for identification purposes only, and we are in no way implying that our products are original equipment parts. Prices subject to change without notice.



# Replaces Toro Reelmaster 5410-D Parts

*Traction Unit - with Yanmar Engine*  
*Rear Axle*



Item No	R&R Part No.	OEM Part No.	Description	Qty Req	Order Quantity
100	R254-72	01-103-0050, 01-103-0120, 01-103-0140, 1-543508, 254-71, 254-72, 40439, 62-3340, 99-4511	Cup - Bearing	4	
101	R254-94	1-543509, 254-94, 32-8090, 32-8240, 32-9640, 40440, 62-3330	Tapered Bearing Cone	4	
102	R114-3918	1-633926, 114-3918	Stud - Wheel - 1/2-20 x 1 15/16	10	
103	R121-5631	120-6255, 121-5621, 121-5631	Hub Assy	2	
105	R117-3290	117-3290	Nut - Hex	2	
106	R241-119	01-269-0070, 01-269-0280, 01-286-0040, 241-119, 30-9930, 40438	Cap-Dust	2	
107	R232-27	232-27, 232-31	Stem - Valve w/ Cap	2	
108	R110-5334-03	110-5334-03	Tie Rod Assy	1	
109	R110-5335	110-5335	Tie Rod	1	
110	R110-5337	110-5337	Nut - Jam 11/16-18 LH	2	
111	R2411-46	2411-46, 2411-46-03	End - Tie Rod - LH	1	

All original equipment manufacturers names and part numbers are used for identification purposes only, and we are in no way implying that our products are original equipment parts. Prices subject to change without notice.



## Replaces Toro Reelmaster 5410-D Parts

*Traction Unit - with Yanmar Engine*  
*Rear Axle*



Item No	R&R Part No.	OEM Part No.	Description	Qty Req	Order Quantity
112	<b>R107-4546-03</b>	107-4546-03	Axle Assy	1	
113	<b>R71-4740-03</b>	2411-45, 71-4740, 71-4740-03	End - Tie Rod - RH	1	
114	<b>R84-5300</b>	84-5300	Nut - Jam 11/16-18 RH	1	
115	<b>R93-0307</b>	93-0307	Nut - Lock Retainer	2	
116	<b>R242-50</b>	242-50	Nut - 1/2-20 Wheel	10	

All original equipment manufacturers names and part numbers are used for identification purposes only, and we are in no way implying that our products are original equipment parts. Prices subject to change without notice.