

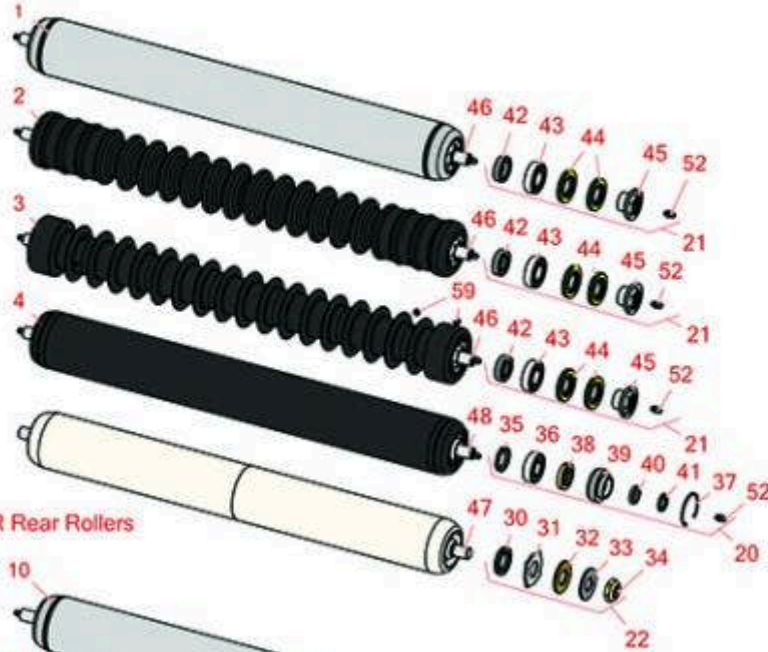


Replaces Toro Reelmaster 5510-D Parts

DPA Cutting Unit - Models 03681 & 03682
Rollers



R&R Front Rollers



R&R Rear Rollers



All original equipment manufacturers names and part numbers are used for identification purposes only, and we are in no way implying that our products are original equipment parts. Prices subject to change without notice.



Replaces Toro Reelmaster 5510-D Parts

DPA Cutting Unit - Models 03681 & 03682
Rollers



Item No	R&R Part No.	OEM Part No.	Description	Qty Req	Order Quantity
---------	--------------	--------------	-------------	---------	----------------

R&R Front Rollers

1	R114-5412	114-5412	Roller - Smooth Tubular Steel	1	
---	------------------	----------	-------------------------------	---	--

Detail Description: Constructed with a through shaft, this heavy-duty roller uses greasable stainless ball bearings. (2008 & Up):

2	R1503915	110-9608, 114-5421	Roller - Fusion Grooved UHMW Polyethylene Shoulder	1	
---	-----------------	-----------------------	--	---	--

Detail Description: Fusion Rollers combine the best features of our UHMW plastic rollers with a heavy duty internal bearing system. Machined from solid UHMW plastic that prevents build-up of debris. This roller has a patented deep groove design in the center along with shallow grooves on each end to reduce marking in wet conditions and turns on precision stainless ball bearings and double seals for added life.:

3	R1503911	110-4050, 114-5400, 114-5421	Roller - Fusion Grooved UHMW Polyethylene	1	
---	-----------------	------------------------------------	---	---	--

Detail Description: Fusion Rollers combine the best features of our UHMW plastic rollers with a heavy-duty internal bearing system. Machined from solid UHMW plastic that prevents build-up of debris. This roller has a patented deep groove design and turns on precision stainless ball bearings and double seals for added life. (2006 & Up):

4	R110-9605	110-9605	Roller - Smooth Tubular Steel	1	
---	------------------	----------	-------------------------------	---	--

Detail Description: Constructed with a through shaft, this heavy-duty roller uses greasable ball bearings. (2006 - 2007):

R&R Rear Rollers

10	R114-5415	114-5415	Roller - Smooth Tubular Steel	1	
----	------------------	----------	-------------------------------	---	--

Detail Description: Constructed with a through shaft, this heavy duty roller uses greasable stainless ball bearings. (2008 & Up):

11	R107-4024	107-4024	Smooth Tubular Steel Roller - Long	1	
----	------------------	----------	------------------------------------	---	--

Detail Description: Constructed with a through shaft, this heavy-duty roller uses greasable ball bearings. (2006 - 2007):

12	R114-5417	114-5417	Roller - Smooth Solid Steel	1	
----	------------------	----------	-----------------------------	---	--

All original equipment manufacturers names and part numbers are used for identification purposes only, and we are in no way implying that our products are original equipment parts. Prices subject to change without notice.



Replaces Toro Reelmaster 5510-D Parts

DPA Cutting Unit - Models 03681 & 03682
Rollers



Item No	R&R Part No.	OEM Part No.	Description	Qty Req	Order Quantity
<i>Detail Description: Constructed with a through shaft, this heavy-duty roller uses greasable stainless ball bearings. (2008 & Up):</i>					
13	R110-4065	110-4065	Roller - Smooth Tubular Steel	1	
<i>Detail Description: Constructed with a through shaft, this heavy-duty roller uses greasable ball bearings. (2006 - 2007):</i>					
14	R1503940	1503940	Roller - Smooth UHMW Polyethylene	1	
<i>Detail Description: Machined from solid UHMW, this low maintenance roller uses a 1" solid stainless steel shaft and requires no grease. UHMW material prevents build-up of debris. (2006 & Up):</i>					
15	R1503916		Roller - Fusion Smooth UHMW Polyethylene	1	
<i>Detail Description: Fusion Rollers combine the best features of our UHMW plastic rollers with a heavy duty internal bearing system. Machined from solid UHMW plastic that prevents build-up of debris. This roller has stainless precision ball bearings and double seals for added life. (2006 & Up):</i>					
16	R1503946		Roller - Smooth UHMW Polyethylene	1	
<i>Detail Description: Machined from solid UHMW, this low maintenance roller uses a 1" solid stainless steel shaft and requires no grease. UHMW material prevents build-up of debris. (2006 & Up):</i>					
Overhaul Kits					
20	R106-9606	106-9606	Overhaul Kit - Roller	0	
<i>Detail Description: Include 2 ea: R343667 Bearings, R253-70 Seals, R32120-62 Retaining Rings, R93-1251 Seals, R93-1252 Seals, R93-2931 Washers, R93-3007 Seals:</i>					
21	R114-5430	114-5430	Overhaul Kit - Roller	0	
<i>Detail Description: Includes 4 ea.: R112-7494 Seals; 2 ea.: R302-5 Grease Zerks, R114-3717 Seals, R112-5290 Bearings & R114-3745 Locknuts:</i>					
22	R101399		Overhaul Kit - UHMW 2 Pc Roller	0	

All original equipment manufacturers names and part numbers are used for identification purposes only, and we are in no way implying that our products are original equipment parts. Prices subject to change without notice.



Replaces Toro Reelmaster 5510-D Parts

DPA Cutting Unit - Models 03681 & 03682
Rollers



Item No	R&R Part No.	OEM Part No.	Description	Qty Req	Order Quantity
---------	--------------	--------------	-------------	---------	----------------

Detail Description: Fits all R&R 2-1/2" - 3-1/2" Dia. Black UHMW Plastic Rollers that do not use ball bearings.. Includes 2 ea.: R1503230 Star Washers, R1503470 Seals, R150333 Thrust Washers, R3296-15 Locknuts, R1503471 Bronze Thrust Washers:

Other Parts Available

30	R1503470		Seal - Inner Wiper	2	
31	R1503230		Washer - Thrust Outer Keyed	2	
32	R1503471		Washer - Thrust SAE660 Bronze	2	
33	R150333		Washer - Flat Keyed Outer SS	2	
34	R3296-15	116-7306, 32118-5, 32127-23, 32127-47, 3296-15	Locknut - 3/4-16 Nylon Jam	2	
35	R93-3007	93-3007	Seal	4	
36	R343667	109966, 251-6, 38-7820	Bearing - Ball	4	
37	R32120-62	32120-62	Ring - Retaining	2	
38	R93-1251	93-1251	Seal	2	
39	R93-1252	93-1252	Seal - Outer	2	
40	R253-70	253-70	Seal	2	
41	R93-2931	93-2931	Washer - Roller Seal	2	
42	R114-3717	114-3717	Seal	2	
43	R112-5290	112-5290, 251--346, 251-346, 72-5430	Bearing - Stainless	2	
44	R112-7494	112-7494	Seal	4	

All original equipment manufacturers names and part numbers are used for identification purposes only, and we are in no way implying that our products are original equipment parts. Prices subject to change without notice.



Replaces Toro Reelmaster 5510-D Parts

DPA Cutting Unit - Models 03681 & 03682
Rollers



Item No	R&R Part No.	OEM Part No.	Description	Qty Req	Order Quantity
45	R114-3745	106-6939, 108-3151, 114-3745, 114-5411	Locknut - Bearing - Stainless	2	
46	R114-5403	114-5403	Shaft - Front Roller	1	
47	R1503923		Shaft - Front Rollers	1	
48	R110-4053	110-4053	Shaft - Front Roller	1	
52	R302-5	21-6010, 302-11, 302-37, 302-47, 302-5, 302-57, 302-58, 302-6, 31-0300, 32-9660, 60-0800, 62-3880, 92-4181	Fitting - Grease	2	
53	R114-5410	114-5410	Shaft - Short - Rear Roller	1	
54	R1503938		Shaft - Short Rear Rollers	1	
55	R114-5407	114-5407	Shaft - Long Rear Roller	1	
56	R1503949		Shaft - Long Rear Rollers	1	
57	R107-3296	107-3296, 99-5717	Shaft - Rear Long Roller	1	
58	R110-4060	110-4060	Shaft	1	
59	R300106	104-1835, 300106	Screw - Set 5/16-18 x 1/4	4	

All original equipment manufacturers names and part numbers are used for identification purposes only, and we are in no way implying that our products are original equipment parts. Prices subject to change without notice.