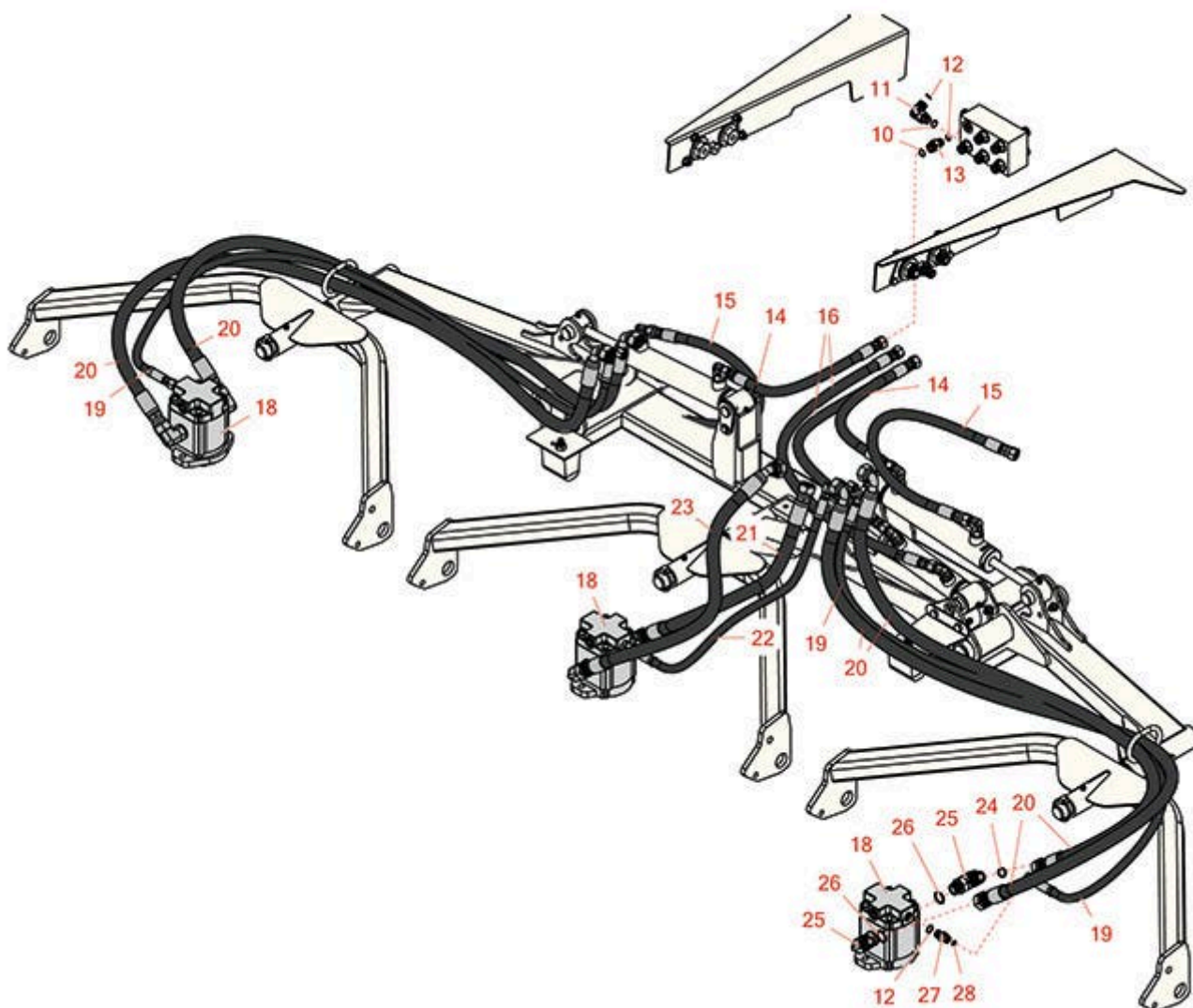




Replaces Toro Groundsmaster 4500-D Parts

Traction Unit with Yanmar Engine - Model 30881A
Front Lift Arm Hydraulics



All original equipment manufacturers names and part numbers are used for identification purposes only, and we are in no way implying that our products are original equipment parts. Prices subject to change without notice.



Replaces Toro Groundsmaster 4500-D Parts

*Traction Unit with Yanmar Engine - Model 30881A
Front Lift Arm Hydraulics*



Item No	R&R Part No.	OEM Part No.	Description	Qty Req	Order Quantity
---------	--------------	--------------	-------------	---------	----------------

Hoses

14	R104-5512	104-5512	Hydraulic Hose Assy	2	
15	R99-3579	99-3579	Hydraulic Hose Assy	2	
16	R104-5511	104-5511	Hydraulic Hose Assy	2	
19	R104-5500	104-5500	Hydraulic Hose Assy	2	
20	R104-5501	104-5501	Hydraulic Hose Assy	4	
21	R104-5505	104-5505	Hydraulic Hose Assy	1	
22	R104-5502	104-5502	Hydraulic Hose Assy	1	
23	R104-5504	104-5504	Hydraulic Hose Assy	1	

Other Parts Available

10	R237-42	237-42, 31-4160	O-Ring	10	
11	R340-77	340-100, 340-77, 95-7889	Hydraulic Fitting	1	
12	R237-22	107-8844, 237-22, 237-78	O-Ring	14	
13	R340-2	340-2, 60-1920	Hydraulic Fitting - Striaight	9	
18	R117-5141	105-9820, 105-9872, 117-5141, 137-5571	Hydraulic Motor	3	
24	R237-65	237-65, 237.65	O-Ring	6	
25	R340-17	340-17	No 10 Male Orfs x No 10 Male Orb	6	

All original equipment manufacturers names and part numbers are used for identification purposes only, and we are in no way implying that our products are original equipment parts. Prices subject to change without notice.



Replaces Toro Groundsmaster 4500-D Parts



*Traction Unit with Yanmar Engine - Model 30881A
Front Lift Arm Hydraulics*

Item No	R&R Part No.	OEM Part No.	Description	Qty Req	Order Quantity
26	R237-80	237-80, 327-80	O-Ring	6	
27	R340-92	340-92	Hydraulic Fitting - Striaght	3	
28	R237-21	237-21, 327-21	O-Ring	3	

All original equipment manufacturers names and part numbers are used for identification purposes only, and we are in no way implying that our products are original equipment parts. Prices subject to change without notice.