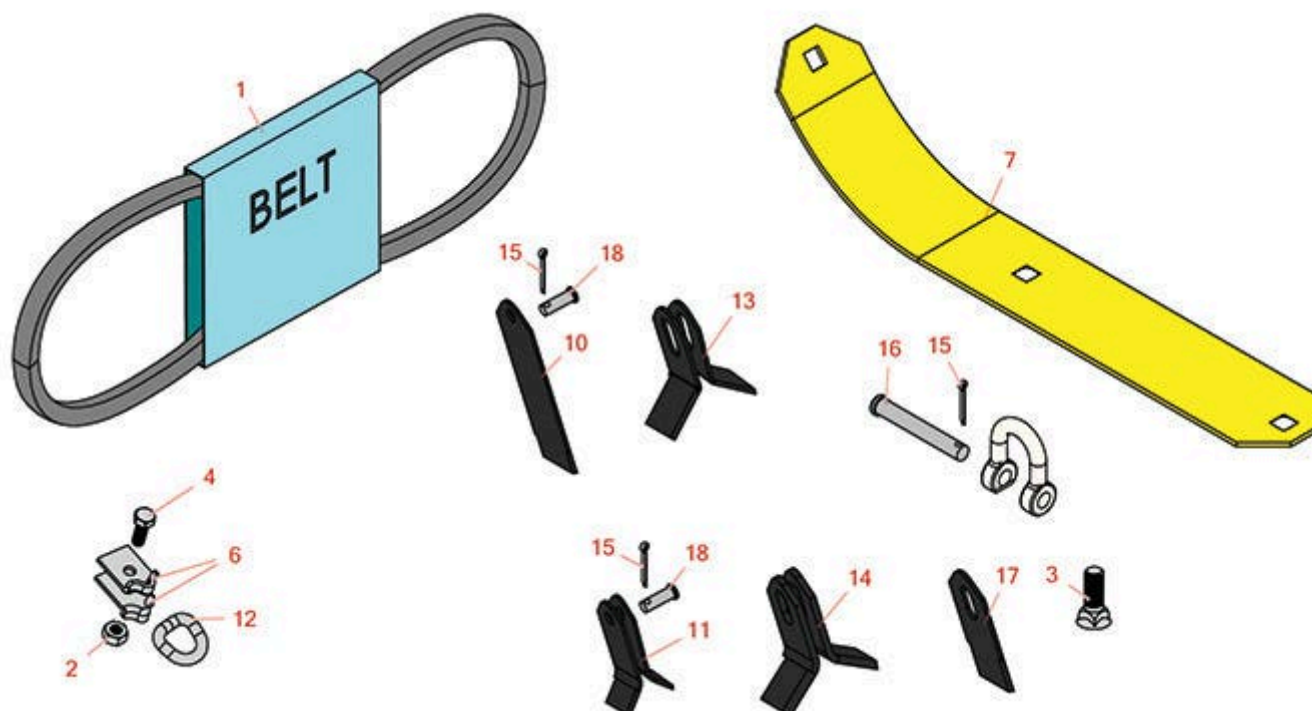




# Replaces Rhino Flail Mower Parts

Flail Mower  
Flail Parts



All original equipment manufacturers names and part numbers are used for identification purposes only, and we are in no way implying that our products are original equipment parts. Prices subject to change without notice.



# Replaces Rhino Flail Mower Parts

Flail Mower

Flail Parts



Item No	R&R Part No.	OEM Part No.	Description	Qty Req	Order Quantity
1	<b>R100706</b>	100706	Belt - Fits 74/88HD	0	
2	<b>R444754</b>	000210	Locknut - 5/16-24 Center	0	
3	<b>R000700</b>	000700	Bolt - Plow 1/2 Nc x 1-1/2	0	
4	<b>R000032</b>	000032	Bolt - 5/16-24 x 7/8 Gr 5	0	
6	<b>R102650</b>	102650	Clip - Use with R400515	0	
7	<b>R103051</b>	103051	Shoe - Wear Plate	0	
10	<b>R400509</b>	102087	Knife - 1 -1/4x5 Thatcher	0	
11	<b>R400515</b>	101993	Knife - H293 1-1/4 x 3	0	
12	<b>R400520</b>	101991	Ring - Use with R400515	0	
13	<b>R400530</b>	100759	Blade - 88-59 Coarse Cut Heavy Dty	0	
<i>Detail Description: 12 Ga. Mat, .104 Thick:</i>					
14	<b>R400531</b>	105319	Flail Blade - Coarse Cut Super HD	0	
<i>Detail Description: 3/16" Mat., .187" Thick:</i>					
15	<b>R400536</b>	000026	Pin - Cotter Box/100	0	
16	<b>R400540</b>	102670	Pin - 7/16 Dia.x 3 Hard	0	
<i>Tech Note: Use only with R400530:</i>					
17	<b>R103026</b>	103026	Knife - Thatching 1-3/4 x 3 3/8	0	
18	<b>R400535</b>	101034	Pin - 5/16 Dia.x 7/8 Hard	0	

All original equipment manufacturers names and part numbers are used for identification purposes only, and we are in no way implying that our products are original equipment parts. Prices subject to change without notice.