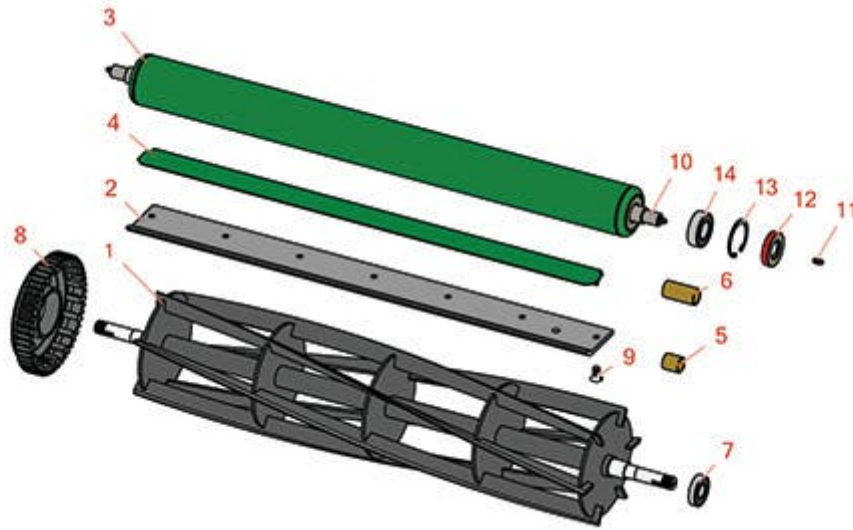




Replaces Ransomes Sportcutter MK10 &MK11 & Magna MK12 Parts

*Cutting Unit
Reel & Bedknife*



All original equipment manufacturers names and part numbers are used for identification purposes only, and we are in no way implying that our products are original equipment parts. Prices subject to change without notice.



Replaces Ransomes Sportcutter MK10 &MK11 & Magna MK12 Parts

Cutting Unit
Reel & Bedknife



Item No	R&R Part No.	OEM Part No.	Description	Qty Req	Order Quantity
---------	--------------	--------------	-------------	---------	----------------

R&R Reels, Lifetime Guaranteed

1	R2772	MBC2772A	Reel - 6 Blade 8 Dia	1
---	--------------	----------	----------------------	---

Detail Description: R&R Reel blades are expertly crafted from premium high carbon-boron alloy steel, heat-treated to perfectly complement both R&R and OEM bedknives. Each reel undergoes precision cylindrical grinding on bearing surfaces, followed by relief grinding for optimal performance. Advanced computer balancing ensures extended reel and bearing life. Backed by our lifetime guarantee against defects in materials and craftsmanship under normal use, R&R Reels deliver unmatched durability and cutting precision you can trust.:

1	R5955	MBB2235B	Reel - 5 Blade	1
---	--------------	----------	----------------	---

Detail Description: R&R Reel blades are expertly crafted from premium high carbon-boron alloy steel, heat-treated to perfectly complement both R&R and OEM bedknives. Each reel undergoes precision cylindrical grinding on bearing surfaces, followed by relief grinding for optimal performance. Advanced computer balancing ensures extended reel and bearing life. Backed by our lifetime guarantee against defects in materials and craftsmanship under normal use, R&R Reels deliver unmatched durability and cutting precision you can trust.:

1	R5956		Reel - 6 Blade	1
---	--------------	--	----------------	---

Detail Description: R&R Reel blades are expertly crafted from premium high carbon-boron alloy steel, heat-treated to perfectly complement both R&R and OEM bedknives. Each reel undergoes precision cylindrical grinding on bearing surfaces, followed by relief grinding for optimal performance. Advanced computer balancing ensures extended reel and bearing life. Backed by our lifetime guarantee against defects in materials and craftsmanship under normal use, R&R Reels deliver unmatched durability and cutting precision you can trust.:

R&R Bedknives, Lifetime Guaranteed

2	R170550	MBA7024, MBA7024A	Bedknife - Single Lip	1
---	----------------	----------------------	-----------------------	---

Detail Description: R&R Bedknives are manufactured from high carbon-boron alloy steel and then hardened to RC46-49 to match the temper of our reel blades and original equipment reels. Bedknives are surface ground on the top and front edge and straightened three times before being packaged with oil for rust prevention. All R&R Bedknives now have an increased front edge grind for added life. All R&R Bedknives are guaranteed against defects in material and workmanship under normal use for the life of the part.:

R&R Rollers

3	R170560	LMSD614B	Roller - Smooth Rear	1
---	----------------	----------	----------------------	---

All original equipment manufacturers names and part numbers are used for identification purposes only, and we are in no way implying that our products are original equipment parts. Prices subject to change without notice.



Replaces Ransomes Sportcutter MK10 &MK11 & Magna MK12 Parts

*Cutting Unit
Reel & Bedknife*



Item No	R&R Part No.	OEM Part No.	Description	Qty Req	Order Quantity
---------	--------------	--------------	-------------	---------	----------------

Other Parts Available

4	R500655	LTC0635A	Deflector - Metal - Bed Bar	1	
5	RLTC0629	LTC0629	Bushing - Oilite For Bed Bar	2	
6	RGSF3002PN	GSF3002PN	Bushing - Oilite Int. Gear	2	
7	RA203604	A203604	Bearing	2	
8	RLTC4546A	LTC4546A	Gear - Main	2	
9	R170555	LSO2521B	Screw - 3/8-16 x 3/4 Flat HD	7	
10	R170561		Shaft - Roller - Fits R170560	1	
11	R302-5		Fitting - Grease	2	
12	RC-10024	C-10024	Seal - Roller	2	
13	RC-10025	C-10025	Ring - Retaining	2	
14	RC-10209	C-10209	Bearing - Ball Rear Roller	2	

All original equipment manufacturers names and part numbers are used for identification purposes only, and we are in no way implying that our products are original equipment parts. Prices subject to change without notice.