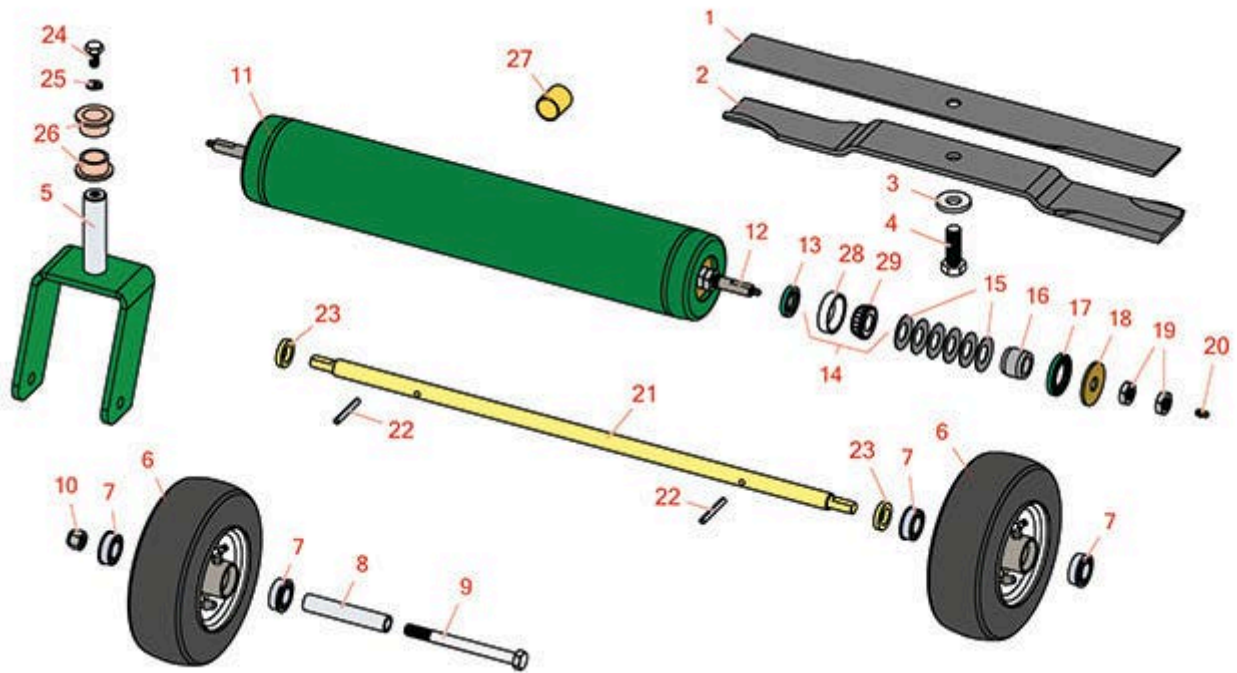




Replaces Ransomes AR250 Parts

Rotary Deck
Rotary Parts



All original equipment manufacturers names and part numbers are used for identification purposes only, and we are in no way implying that our products are original equipment parts. Prices subject to change without notice.



Replaces Ransomes AR250 Parts

Rotary Deck
Rotary Parts



| Item No | R&R Part No. | OEM Part No. | Description | Qty Req | Order Quantity |
|---|--------------------|--------------|---|---------|----------------|
| 1 | R2192502-03 | 2192502-03 | Mower Blade - Mulcher | 1 | |
| 2 | R112243-05 | 112243-05 | Mower Blade - Standard Lift | 1 | |
| 2 | R112111-05 | 112111-05 | Mower Blade - 22 in High-Lift | 1 | |
| 3 | R64209-03 | 64209-03 | Washer - Spring Blade Bolt | 1 | |
| 4 | R64123-211 | 64123-211 | Bolt - Blade 5/8-18 x 1-3/4 | 1 | |
| 5 | R2206164 | 2206164 | Caster Fork | 2 | |
| 6 | R2208159 | 2208159 | Caster Wheel - 8x300-4.00 | 0 | |
| 6 | RCT5120081 | 2208159-01 | Tire - 8x3.00-4 Nhs (4 Ply) Carlisle Smooth | 2 | |
| 7 | R2188123-03 | 2188123-03 | Bearing - Caster Wheel | 2 | |
| 8 | R62-4340 | 2203097 | Bushing - Spanner Front | 2 | |
| 9 | R325-22 | 64123-166 | Bolt - Hx HD 1/2-13 x 5 1/2 | 2 | |
| 10 | RF5003 | 64229-05 | Locknut - ESNA 1/2-13 | 2 | |
| 11 | R2206195 | 2206195 | Roller - Smooth Tubular Steel | 1 | |
| 12 | R2203012 | 2203012 | Shaft - 22 in Roller | 1 | |
| 13 | R253-120 | 2208011-02 | Seal | 2 | |
| 14 | R500534 | 2208006 | Bearing - with Cup | 2 | |
| <i>Detail Description: Kit includes: 1 ea R254-78- Bearing Cone & R254-79 Bearing Cone:</i> | | | | | |
| 15 | R64209-06 | 64209-06 | Washer - Spring Roller | 12 | |
| 16 | R2203022 | 2203022 | Sleeve - Wear - Roller | 2 | |
| 17 | RAN121759 | 2208011-03 | Seal | 2 | |
| 18 | R2202010 | 2202010 | Shield - Roller | 2 | |
| 19 | R64244-02 | 64244-02 | Nut - Hex Jam 16mm x 2.0 | 4 | |

All original equipment manufacturers names and part numbers are used for identification purposes only, and we are in no way implying that our products are original equipment parts. Prices subject to change without notice.



Replaces Ransomes AR250 Parts

Rotary Deck

Rotary Parts



| Item No | R&R Part No. | OEM Part No. | Description | Qty Req | Order Quantity |
|---|-------------------|---------------------|-------------------------------|---------|----------------|
| 20 | RA299301 | A299301 | Fitting - Grease | 2 | |
| 21 | R2722149 | 2203086, 2722149 | Shaft - Front Castor Wheels | 1 | |
| 22 | R64176-03 | 64176-03 | Pin - Roll 1/4 x 2 | 2 | |
| 23 | R64163-71 | 64163-71 | Washer - Castor Wheel Shaft | 2 | |
| 24 | R64205-007 | 64205-007 | Bolt - Hex HD M10-1.5 x 20 | 2 | |
| 25 | R800488 | 800488 | Washer - Lock M10 | 2 | |
| 26 | R48053-07 | 48053-07 | Bushing - Flanged Castor Fork | 4 | |
| 27 | R48048A | 48048A | Sleeve - Bearing Bronze | 2 | |
| 28 | R254-79 | | Cup - Bearing | 2 | |
| <i>Detail Description: Use R254-79M installation mandrel to properly install race.:</i> | | | | | |
| 29 | R254-78 | | Tapered Bearing Cone | 3 | |

All original equipment manufacturers names and part numbers are used for identification purposes only, and we are in no way implying that our products are original equipment parts. Prices subject to change without notice.