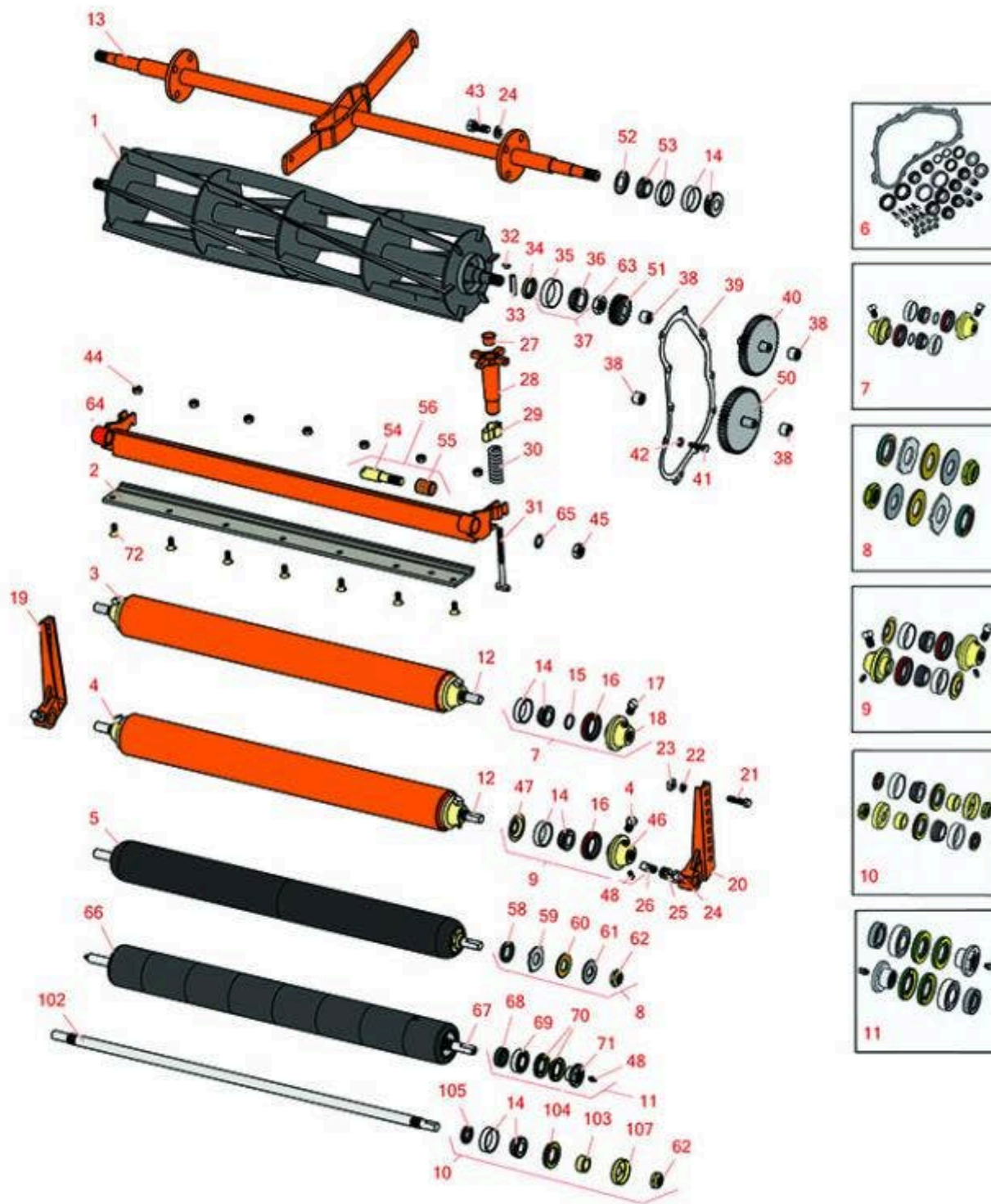




Replaces Jacobsen HF-15 Parts

Traction Unit



All original equipment manufacturers names and part numbers are used for identification purposes only, and we are in no way implying that our products are original equipment parts. Prices subject to change without notice.



Replaces Jacobsen HF-15 Parts

Traction Unit



Item No	R&R Part No.	OEM Part No.	Description	Qty Req	Order Quantity
---------	--------------	--------------	-------------	---------	----------------

R&R Reels, Lifetime Guaranteed

1	R502671	108127, 502671	Reel - 6 Blade	1	
---	----------------	-------------------	----------------	---	--

Detail Description: R&R Reel blades are expertly crafted from premium high carbon-boron alloy steel, heat-treated to perfectly complement both R&R and OEM bedknives. Each reel undergoes precision cylindrical grinding on bearing surfaces, followed by relief grinding for optimal performance. Advanced computer balancing ensures extended reel and bearing life. Backed by our lifetime guarantee against defects in materials and craftsmanship under normal use, R&R Reels deliver unmatched durability and cutting precision you can trust.:

1	R502672		Reel - 8 Blade	1	
---	----------------	--	----------------	---	--

Detail Description: R&R Reel blades are expertly crafted from premium high carbon-boron alloy steel, heat-treated to perfectly complement both R&R and OEM bedknives. Each reel undergoes precision cylindrical grinding on bearing surfaces, followed by relief grinding for optimal performance. Advanced computer balancing ensures extended reel and bearing life. Backed by our lifetime guarantee against defects in materials and craftsmanship under normal use, R&R Reels deliver unmatched durability and cutting precision you can trust.:

1	R502675	108100, 502675	Reel - 10 Blade	1	
---	----------------	-------------------	-----------------	---	--

Detail Description: R&R Reel blades are expertly crafted from premium high carbon-boron alloy steel, heat-treated to perfectly complement both R&R and OEM bedknives. Each reel undergoes precision cylindrical grinding on bearing surfaces, followed by relief grinding for optimal performance. Advanced computer balancing ensures extended reel and bearing life. Backed by our lifetime guarantee against defects in materials and craftsmanship under normal use, R&R Reels deliver unmatched durability and cutting precision you can trust.:

R&R Bedknives, Lifetime Guaranteed

2	R325163	325163	Bedknife - 30" 7 Hole	1	
---	----------------	--------	-----------------------	---	--

Detail Description: R&R Bedknives are manufactured from high carbon-boron alloy steel and then hardened to RC46-49 to match the temper of our reel blades and original equipment reels. Bedknives are surface ground on the top and front edge and straightened three times before being packaged with oil for rust prevention. All R&R Bedknives now have an increased front edge grind for added life. All R&R Bedknives are guaranteed against defects in material and workmanship under normal use for the life of the part.:

2	R101251	315834	Bedknife - Double Lip Fwy	1	
---	----------------	--------	---------------------------	---	--

All original equipment manufacturers names and part numbers are used for identification purposes only, and we are in no way implying that our products are original equipment parts. Prices subject to change without notice.



Replaces Jacobsen HF-15 Parts

Traction Unit



Item No	R&R Part No.	OEM Part No.	Description	Qty Req	Order Quantity
---------	--------------	--------------	-------------	---------	----------------

Detail Description: R&R Bedknives are manufactured from high carbon-boron alloy steel and then hardened to RC46-49 to match the temper of our reel blades and original equipment reels. Bedknives are surface ground on the top and front edge and straightened three times before being packaged with oil for rust prevention. All R&R Bedknives now have an increased front edge grind for added life. All R&R Bedknives are guaranteed against defects in material and workmanship under normal use for the life of the part.:

2	R101251L		Bedknife - Double Lip Low Cut	1	
---	-----------------	--	-------------------------------	---	--

Detail Description: R&R Bedknives are manufactured from high carbon-boron alloy steel and then hardened to RC46-49 to match the temper of our reel blades and original equipment reels. Bedknives are surface ground on the top and front edge and straightened three times before being packaged with oil for rust prevention. All R&R Bedknives now have an increased front edge grind for added life. All R&R Bedknives are guaranteed against defects in material and workmanship under normal use for the life of the part.:

R&R Rollers

3	R113897	113897, 132506	Roller - Smooth Tubular Steel Oil Filled	1	
---	----------------	-------------------	--	---	--

Tech Note: Constructed with a through shaft, this oil filled heavy-duty roller uses tapered bearings for extended life.:

Detail Description: Constructed with a through shaft, this oil filled heavy-duty roller uses tapered bearings for extended life.:

4	R700500	700500	Roller - Smooth Tubular Steel Regreasable	1	
---	----------------	--------	---	---	--

Tech Note: Constructed with a through shaft, this heavy duty roller uses greasable tapered bearings for extended life.:

Detail Description: Constructed with a through shaft, this heavy duty roller uses greasable tapered bearings for extended life.:

5	R1013902		Roller - Smooth UHMW Polyethylene	1	
---	-----------------	--	-----------------------------------	---	--

Tech Note: Machined from solid UHMW, this low maintenance roller uses a 1" solid stainless steel shaft and requires no grease. UHMW material prevents build-up of debris.:

Detail Description: Machined from solid UHMW, this low maintenance roller uses a 1" solid stainless steel shaft and requires no grease. UHMW material prevents build-up of debris.:

66	R1013910		Roller - Fusion Smooth UHMW Polyethylene	1	
----	-----------------	--	--	---	--

All original equipment manufacturers names and part numbers are used for identification purposes only, and we are in no way implying that our products are original equipment parts. Prices subject to change without notice.



Replaces Jacobsen HF-15 Parts

Traction Unit



Item No	R&R Part No.	OEM Part No.	Description	Qty Req	Order Quantity
---------	--------------	--------------	-------------	---------	----------------

Tech Note: Machined from solid UHMW plastic that prevents build-up of debris. This roller turns on precision stainless ball bearings.:

Detail Description: Machined from solid UHMW plastic that prevents build-up of debris. This roller turns on precision stainless ball bearings.:

Overhaul Kits

6	R500700		Overhaul Kit - Fits Hyd	1
---	----------------	--	-------------------------	---

Tech Note: Includes 8 ea.: R400190 Bolts, R446136 Washers; 4 ea.: R359875 Bearings, R254-78 Bearings, R254-79 Bearing Cups; 2 ea.: R302755 Cups, R315872 Seals, R315914 Bearings, R328062 Seals, R359828 Rings, R459007 O-Rings, R502522 Bearings; 1 ea.: R390204 Gasket:

Detail Description: Includes 8 ea.: R400190 Bolts, R446136 Washers; 4 ea.: R359875 Bearings, R254-78 Bearings, R254-79 Bearing Cups; 2 ea.: R302755 Cups, R315872 Seals, R315914 Bearings, R328062 Seals, R359828 Rings, R459007 O-Rings, R502522 Bearings; 1 ea.: R390204 Gasket:

7	R100140		Overhaul Kit - Oil Filled Roller	1
---	----------------	--	----------------------------------	---

Tech Note: Includes 2 ea.: R500574 Roller Collar, R500534 Bearing Cup & Cone, R459007 O-ring, R328062 Seal, R412063 Screw:

Detail Description: Includes 2 ea.: R500574 Roller Collar, R500534 Bearing Cup & Cone, R459007 O-ring, R328062 Seal, R412063 Screw:

8	R101399		Overhaul Kit - UHMW 2 Pc Roller	1
---	----------------	--	---------------------------------	---

Tech Note: Fits all R&R 2-1/2" - 3-1/2" Dia. Black UHMW Plastic Rollers that do not use ball bearings.. Includes 2 ea.: R1503230 Star Washers, R1503470 Seals, R150333 Thrust Washers, R3296-15 Locknuts, R1503471 Bronze Thrust Washers:

Detail Description: Fits all R&R 2-1/2" - 3-1/2" Dia. Black UHMW Plastic Rollers that do not use ball bearings.. Includes 2 ea.: R1503230 Star Washers, R1503470 Seals, R150333 Thrust Washers, R3296-15 Locknuts, R1503471 Bronze Thrust Washers:

9	R700505		Conversion Kit - Roller	1
---	----------------	--	-------------------------	---

Tech Note: Includes: 2 each: R254-78 Bearing Cones, R254-79 Bearing Cups, R328062 Seals, R412063 Square Head Set Screws, R700501 Roller Ends & R700502 Grease Retainers.:

Detail Description: Includes: 2 each: R254-78 Bearing Cones, R254-79 Bearing Cups, R328062 Seals, R412063 Square Head Set Screws, R700501 Roller Ends & R700502 Grease Retainers.:

10	R100133		Overhaul Kit - Roller	1
----	----------------	--	-----------------------	---

All original equipment manufacturers names and part numbers are used for identification purposes only, and we are in no way implying that our products are original equipment parts. Prices subject to change without notice.



Replaces Jacobsen HF-15 Parts

Traction Unit



Item No	R&R Part No.	OEM Part No.	Description	Qty Req	Order Quantity
---------	--------------	--------------	-------------	---------	----------------

Tech Note: Includes: 2ea: R254-78 Bearings, R254-79 Bearing Cups, R3296-15 Locknuts, R338645 Cup Deflectors, R338646 Seals, R338647 Seals, & R366168 Wear Sleeves:

Detail Description: Includes: 2ea: R254-78 Bearings, R254-79 Bearing Cups, R3296-15 Locknuts, R338645 Cup Deflectors, R338646 Seals, R338647 Seals, & R366168 Wear Sleeves:

11	R114-5430	114-5430	Overhaul Kit - Roller	1	
----	------------------	----------	-----------------------	---	--

Tech Note: Includes 4 ea.: R112-7494 Seals; 2 ea.: R302-5 Grease Zerk, R114-3717 Seals, R112-5290 Bearings & R114-3745 Locknuts:

Detail Description: Includes 4 ea.: R112-7494 Seals; 2 ea.: R302-5 Grease Zerk, R114-3717 Seals, R112-5290 Bearings & R114-3745 Locknuts:

Other Parts Available

12	R328058	328058	Shaft - Roller	1	
----	----------------	--------	----------------	---	--

13	R122038	122038	Axle - Main Assy. Fits HF-15	1	
----	----------------	--------	------------------------------	---	--

14	R500534	500534, R500534	Bearing - with Cup	4	
----	----------------	--------------------	--------------------	---	--

Detail Description: Kit includes: 1 ea R254-78- Bearing Cone & R254-79 Bearing Cone:

15	R459007	459007	O-Ring - Roller	2	
----	----------------	--------	-----------------	---	--

16	R328062	328062	Seal - Roller	2	
----	----------------	--------	---------------	---	--

17	R412063	412063	Screw - Sq. HD. Set	2	
----	----------------	--------	---------------------	---	--

18	R500574	500574	Collar - Roller	2	
----	----------------	--------	-----------------	---	--

19	R500763	500763	Bracket - Roller LH	1	
----	----------------	--------	---------------------	---	--

20	R500764	500764	Bracket - Roller RH	1	
----	----------------	--------	---------------------	---	--

21	R400266	400266	Bolt - Hex HD 3/8-16 x 1-1/2	2	
----	----------------	--------	------------------------------	---	--

22	R3254-6	3254-6, 446140, 446142	Washer - Lock 3/8	2	
----	----------------	------------------------------	-------------------	---	--

23	R444510	444510	Nut - 3/8-16 Sq.	2	
----	----------------	--------	------------------	---	--

All original equipment manufacturers names and part numbers are used for identification purposes only, and we are in no way implying that our products are original equipment parts. Prices subject to change without notice.



Replaces Jacobsen HF-15 Parts

Traction Unit



Item No	R&R Part No.	OEM Part No.	Description	Qty Req	Order Quantity
24	R446154	446152, 446154	Washer - Lock 1/2	2	
25	R443818	443818	Nut - 1/2-13 Hex Jam Zinc	2	
26	R412003	412003	Screw - 1/2-13 x 1-1/2 Sq HD	2	
27	R312794	312794	Plug - Adj. Handle	2	
28	R500548	500548	Handle - Adjusting	2	
29	R315964	315964	Spring - Friction	2	
30	R315966	315966	Spring - Adjusting	2	
<i>Tech Note: Spring overall length is 2-3/4":</i>					
<i>Detail Description: Spring overall length is 2-3/4":</i>					
31	R315965	315965	Screw - Adjusting Fairway	2	
<i>Tech Note: 4-1/2" overall length:</i>					
<i>Detail Description: 4-1/2" overall length:</i>					
32	R315877	315877	Key - Pinion Gear	4	
33	R461406	461406	Pin - Roll	2	
34	R315872	315872, 336781	Seal - Reel	2	
35	R302755	302755	Cup - Bearing	2	
36	R315914	315914	Tapered Bearing Cone	2	
37	R500711	500711	Bearing - with Cup	2	
38	R359875	359875	Bearing - Needle	4	
39	R390204	390204	Gasket - Cover (Fits HF-15)	1	
40	R131170	131170, 162219	Gear - Int (Fits HF-15)	1	

All original equipment manufacturers names and part numbers are used for identification purposes only, and we are in no way implying that our products are original equipment parts. Prices subject to change without notice.



Replaces Jacobsen HF-15 Parts

Traction Unit



Item No	R&R Part No.	OEM Part No.	Description	Qty Req	Order Quantity
41	R400190	352737, 400190	Bolt - Hex HD 5/16-18 x 1-1/4 GR5	8	
42	R446136	446134, 446136	Washer - Lock 5/16 Zinc	8	
43	R400406	400406	Bolt - Hex HD 1/2-13 x 1-1/4	8	
44	R101271	445684	Nut - Bedknife	7	
45	R443828	443828	Nut - 5/8-18 Hex	2	
46	R700501	700501	Roller End - Regreasable	2	
47	R700502	700502	Retainer - Grease	2	
48	R302-5	302-5, 471214, 471223, 471226	Fitting - Grease	2	
50	R162220	162220	Gear - Idler w/Shaft	1	
51	R336825	336825	Gear - Pinion Fits HF-15	1	
52	R359828	359828	Ring - Nilos	2	
53	R502522	502522	Tapered Bearing Set - Cup and Cone	2	
54	R315909	315909	Stud - Bedknife Backing	2	
55	R545723	545723	Bushing - For Backing Stud	2	
56	R500264	500264	Stud - with Bushing	2	
58	R1503470		Seal - Inner Wiper	2	
59	R1503230		Washer - Thrust Outer Keyed	2	
60	R1503471		Washer - Thrust SAE660 Bronze	2	
61	R150333		Washer - Flat Keyed Outer SS	2	

All original equipment manufacturers names and part numbers are used for identification purposes only, and we are in no way implying that our products are original equipment parts. Prices subject to change without notice.



Replaces Jacobsen HF-15 Parts

Traction Unit



Item No	R&R Part No.	OEM Part No.	Description	Qty Req	Order Quantity
62	R3296-15	3296-15, 367029, 444742	Locknut - 3/4-16 Nylon Jam	2	
63	R444742	444742	Nut - 3/4-16 Gripco Centerlock	2	
64	R130304	130304	Backing Bar - Bed Knife	2	

Tech Note: Includes R545723:

Detail Description: Includes R545723:

65	R447224	447224	Washer - Lock 5/8 Int Star Z	2	
----	----------------	--------	------------------------------	---	--

Replaces Jacobsen 132506 Roller Parts

67	R1013911		Shaft	1	
68	R114-3717		Seal	2	
69	R112-5290		Bearing - Stainless	2	
70	R112-7494		Seal	4	
71	R114-3745		Locknut - Bearing - Stainless	2	
72	R101270	402698, 403757	Screw - Bedknife 3/8-24 x 13/16	7	
102	R339051	339051	Shaft - Roller - Fits OEM Rollers	1	
103	R366168	336168, 366168	Sleeve - Wear Hardened	2	
104	R338646	338646	Seal - Outer Roller	2	
105	R338647	338647	Seal - Inner Roller	2	
107	R338645	338645	Deflector - Cup	2	

All original equipment manufacturers names and part numbers are used for identification purposes only, and we are in no way implying that our products are original equipment parts. Prices subject to change without notice.