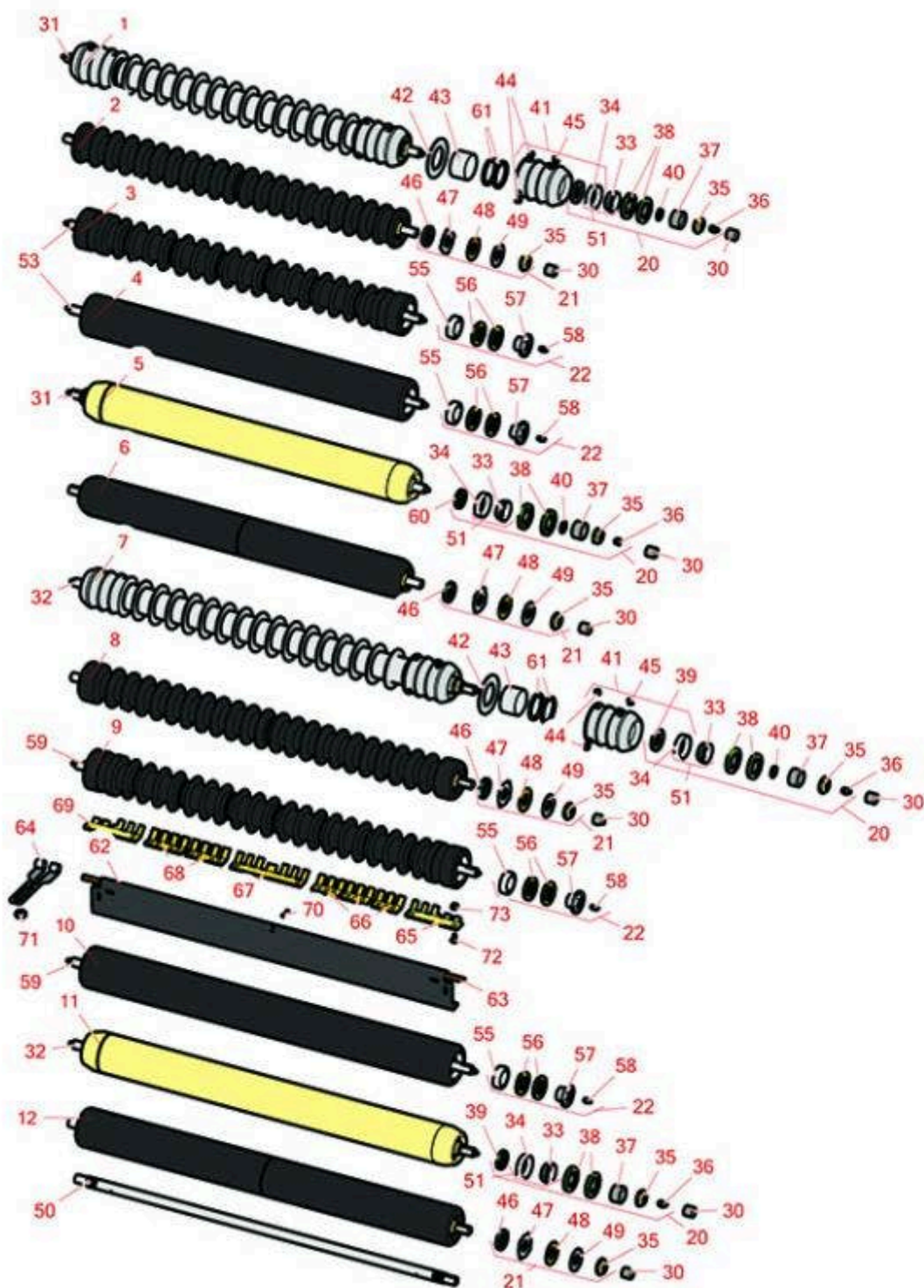




# Replaces John Deere 2653B Reel Mower Parts

Cutting Unit - Serial 030001 & up  
Rollers



All original equipment manufacturers names and part numbers are used for identification purposes only, and we are in no way implying that our products are original equipment parts. Prices subject to change without notice.



# Replaces John Deere 2653B Reel Mower Parts

Cutting Unit - Serial 030001 & up  
Rollers



Item No	R&R Part No.	OEM Part No.	Description	Qty Req	Order Quantity
---------	--------------	--------------	-------------	---------	----------------

## R&R 26" Front Rollers

1	R500509	AMT2968, BM25318	Roller - Grooved Repairable Steel - 26	0	
---	---------	---------------------	--	---	--

*Detail Description: Constructed with a through shaft and greasable ball bearings. This roller can be repaired by unscrewing the ends and replacing the series of washers and spacers.:*

2	R1203500		Roller - Grooved UHMW Polyethylene	0	
---	----------	--	------------------------------------	---	--

*Detail Description: Machined from solid UHMW, this low maintenance roller rotates around a 1" solid stainless steel shaft and requires no bearings or grease. Patented groove design and smooth UHMW material prevents build-up of debris.:*

3	R1203830		Roller - Fusion Grooved UHMW Polyethylene - 26 in	0	
---	----------	--	---	---	--

*Detail Description: Fusion Rollers combine the best features of our UHMW plastic rollers with a heavy-duty internal bearing system. Machined from solid UHMW plastic that prevents build-up of debris. This roller has a patented deep groove design and turns on precision stainless ball bearings and double seals for added life:*

## R&R 26" Rear Rollers

4	R1203835		Roller - Fusion Smooth UHMW Polyethylene - 26 in	0	
---	----------	--	--	---	--

*Detail Description: Fusion Rollers combine the best features of our UHMW plastic rollers with a heavy-duty internal bearing system. Machined from solid UHMW plastic that prevents build-up of debris. This roller turns on precision stainless ball bearings and double seals for added life.:*

5	RAET11265	AMT2969	Roller - Smooth Heavy Duty Tubular Steel - 26	0	
---	-----------	---------	---	---	--

*Detail Description: Constructed with a through shaft, this heavy-duty roller uses tapered bearings for extended life.:*

6	R1203521		Roller - Smooth UHMW Polyethylene	0	
---	----------	--	-----------------------------------	---	--

*Detail Description: Machined from solid UHMW, this low maintenance roller uses a 1" solid stainless steel shaft and requires no grease. UHMW material prevents build-up of debris.:*

## R&R 30" Front Rollers

All original equipment manufacturers names and part numbers are used for identification purposes only, and we are in no way implying that our products are original equipment parts. Prices subject to change without notice.



# Replaces John Deere 2653B Reel Mower Parts

Cutting Unit - Serial 030001 & up  
Rollers



Item No	R&R Part No.	OEM Part No.	Description	Qty Req	Order Quantity
---------	--------------	--------------	-------------	---------	----------------

7	R500514	AMT2977, BM25319	Roller - Grooved Repairable Steel - 30	0	
---	---------	---------------------	--	---	--

*Detail Description: Constructed with a through shaft and greasable ball bearings. This roller can be repaired by unscrewing the ends and replacing the series of washers and spacers.:*

8	R1203510		Roller - Grooved UHMW Polyethylene	0	
---	----------	--	------------------------------------	---	--

*Detail Description: Machined from solid UHMW, this low maintenance roller rotates around a 1" solid stainless steel shaft and requires no bearings or grease. Patented groove design and smooth UHMW material prevents build-up of debris.:*

9	R1203840		Roller - Fusion Grooved UHMW Polyethylene - 30 in	0	
---	----------	--	---	---	--

*Detail Description: Fusion Rollers combine the best features of our UHMW plastic rollers with a heavy-duty internal bearing system. Machined from solid UHMW plastic that prevents build-up of debris. This roller has a patented deep groove design and turns on precision stainless ball bearings and double seals for added life:*

## R&R 30" Rear Rollers

10	R1203845		Roller - Fusion Smooth UHMW Polyethylene - 30 in	0	
----	----------	--	--	---	--

*Detail Description: Fusion Rollers combine the best features of our UHMW plastic rollers with a heavy-duty internal bearing system. Machined from solid UHMW plastic that prevents build-up of debris. This roller turns on precision stainless ball bearings and double seals for added life.:*

11	RAMT1056	AMT2976	Roller - Smooth Heavy Duty Tubular Steel - 30	0	
----	----------	---------	---	---	--

*Detail Description: Constructed with a through shaft, this heavy duty roller uses tapered bearings for extended life.:*

12	R1203530		Roller - Smooth UHMW Polyethylene	0	
----	----------	--	-----------------------------------	---	--

*Detail Description: Machined from solid UHMW, this low maintenance roller uses a 1" solid stainless steel shaft and requires no grease. UHMW material prevents build-up of debris.:*

## Overhaul Kits

20	RAET10632	AET10632	Overhaul Kit - Roller	1	
----	-----------	----------	-----------------------	---	--

All original equipment manufacturers names and part numbers are used for identification purposes only, and we are in no way implying that our products are original equipment parts. Prices subject to change without notice.



# Replaces John Deere 2653B Reel Mower Parts

Cutting Unit - Serial 030001 & up  
Rollers



Item No	R&R Part No.	OEM Part No.	Description	Qty Req	Order Quantity
<i>Detail Description: Includes 4 ea: RET15755 Seal; 2 ea: R237-54 O-Ring, R253-122 Seal, R254-78 Bearing, R254-79 Cup, R3296-15 Locknut, R471219 Grease Zerk, RET15726 Sleeve, RET15756 Seal:</i>					
21	<b>R101399</b>		Overhaul Kit - UHMW 2 Pc Roller	1	
<i>Detail Description: Fits all R&amp;R 2-1/2" - 3-1/2" Dia. Black UHMW Plastic Rollers that do not use ball bearings.. Includes 2 ea.: R1503230 Star Washers, R1503470 Seals, R150333 Thrust Washers, R3296-15 Locknuts, R1503471 Bronze Thrust Washers:</i>					
22	<b>R114-5430</b>		Overhaul Kit - Roller	1	
<i>Detail Description: Includes 4 ea.: R112-7494 Seals; 2 ea.: R302-5 Grease Zerks, R114-3717 Seals, R112-5290 Bearings &amp; R114-3745 Locknuts:</i>					
<b>Other Parts Available</b>					
30	<b>RMT74</b>	MT74	Bushing - Roller Bkt	2	
31	<b>RET17514</b>	ET17514	Shaft - 26 Roller	1	
32	<b>RMT1986</b>	MT1986	Shaft - 30 Roller	1	
33	<b>R254-78</b>	JD8188	Tapered Bearing Cone	2	
34	<b>R254-79</b>	JD8226	Cup - Bearing	2	
<i>Detail Description: Use R254-79M installation mandrel to properly install race.:</i>					
35	<b>R3296-15</b>	N101345	Locknut - 3/4-16 Nylon Jam	2	
36	<b>R471219</b>	471219, 471231, JD7759, JD7798	Zerk - Grease	2	
37	<b>RET15726</b>	ET15726, RET15726	Sleeve - Wear Hardened	2	
38	<b>RET15755</b>	ET15755	Seal - Oil	4	
39	<b>R253-122</b>	253-122	Seal	2	

All original equipment manufacturers names and part numbers are used for identification purposes only, and we are in no way implying that our products are original equipment parts. Prices subject to change without notice.



# Replaces John Deere 2653B Reel Mower Parts

Cutting Unit - Serial 030001 & up  
Rollers



Item No	R&R Part No.	OEM Part No.	Description	Qty Req	Order Quantity
40	R237-54	U46731, U6731	O-Ring - Small	2	
41	R150661		Tube - Threaded Fits R500509	1	
41	R150662		Tube - Threaded Grooved Rlr	1	
41	R500511		Roller End - Threaded 3	2	
42	R150673		Washer - 3 Repairable Roller	0	
43	R150676		Spacer - 2-3/4 Dia x 1-1/4 L	0	
44	R150691		Screw - Set Nyloc 3/8-16 x 3/8	4	
45	R170714	E14814	Fitting - Pressure Relief	2	
46	R1503470		Seal - Inner Wiper	2	
47	R1503230		Washer - Thrust Outer Keyed	2	
48	R1503471		Washer - Thrust SAE660 Bronze	2	
49	R150333		Washer - Flat Keyed Outer SS	2	
50	RET16934	ET16934	Shaft - Roller	1	
51	R500534		Bearing - with Cup	2	
<i>Detail Description: Kit includes: 1 ea R254-78- Bearing Cone &amp; R254-79 Bearing Cone:</i>					
53	R1203831		Shaft - Fusion Roller	1	
55	R112-5290		Bearing - Stainless	2	
56	R112-7494		Seal	4	
57	R114-3745		Locknut - Bearing - Stainless	2	
58	R302-5	JD7797, JD7842, JD7844	Fitting - Grease	2	

All original equipment manufacturers names and part numbers are used for identification purposes only, and we are in no way implying that our products are original equipment parts. Prices subject to change without notice.



# Replaces John Deere 2653B Reel Mower Parts

*Cutting Unit - Serial 030001 & up  
Rollers*



Item No	R&R Part No.	OEM Part No.	Description	Qty Req	Order Quantity
59	R1203841		Shaft - Fusion Roller	1	
60	RET15756	ET15756, MT1739, MT739	Seal	2	
61	R150676A		Spacer - 1/8	4	
62	RTC27070	TCU27070	Scraper	1	
63	RMT1982	MT1982	Pin - 30 Scrapers	1	
64	RTC26998	TCU26998	Panel	2	
65	RMT5159	MT5159	Scraper - Fits J.D. LH End	1	
66	RMT2342	MT2342	Section - Grooved Scraper 3 Tooth	3	
67	RMT2340	MT2340	Scraper - Fits J.D. Center	1	
68	RMT2341	MT2341	Section - Grooved Scraper 4 Tooth	2	
69	RMT5158	MT5158	Scraper - Fits J.D. RH End	1	
70	R34M7010	34M7010	Pin - Spring	1	
71	R14M7517	14M7517	Locknut - 10mm x 1.5 ESNA	2	
72	R03M7251	03M7251	Bolt - Gr. Roller Scraper	16	
73	R14M7303	14M7303	Nut - 6mm x 1.0 Flanged	16	

All original equipment manufacturers names and part numbers are used for identification purposes only, and we are in no way implying that our products are original equipment parts. Prices subject to change without notice.