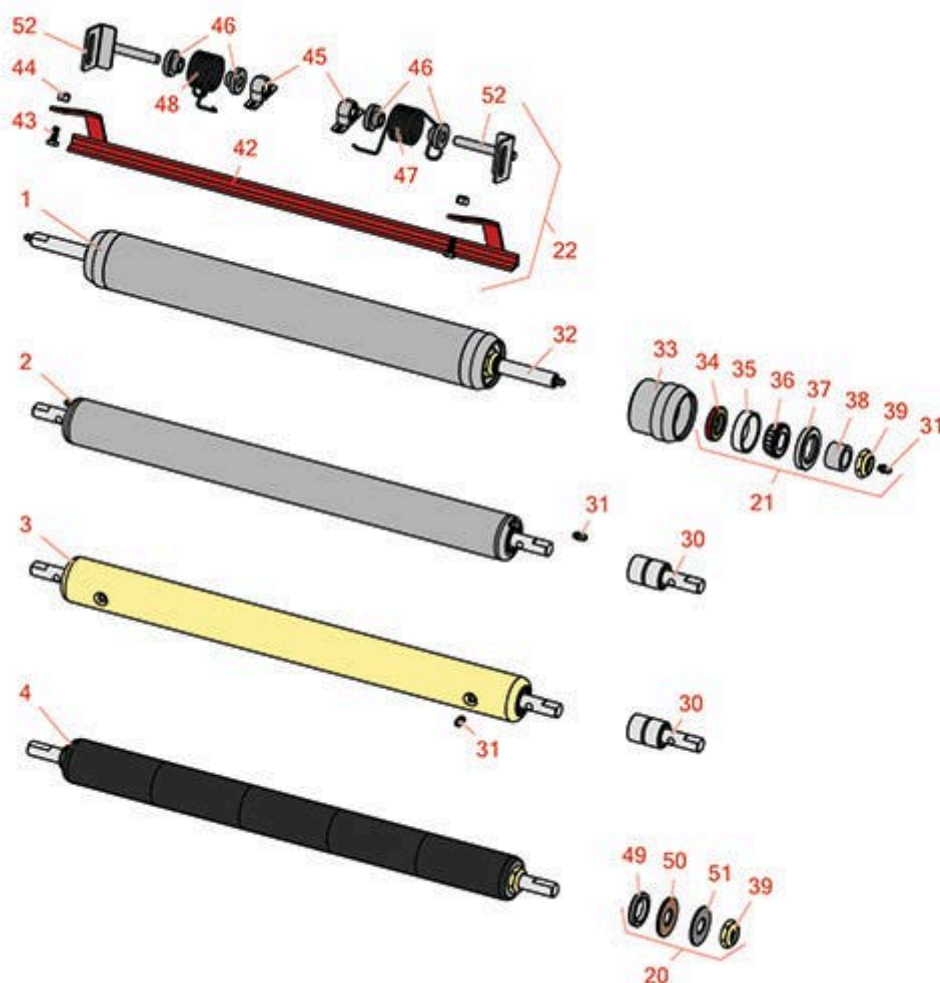




# Replaces Toro Greensmaster 3150-Q Parts

SPA Cutting Unit - Models 04445, 04448 & 04450  
Rear Rollers



All original equipment manufacturers names and part numbers are used for identification purposes only, and we are in no way implying that our products are original equipment parts. Prices subject to change without notice.



# Replaces Toro Greensmaster 3150-Q Parts

SPA Cutting Unit - Models 04445, 04448 & 04450  
Rear Rollers



| Item No | R&R Part No. | OEM Part No. | Description | Qty Req | Order Quantity |
|---------|--------------|--------------|-------------|---------|----------------|
|---------|--------------|--------------|-------------|---------|----------------|

## R&R Rear Rollers

|   |                |        |  |   |
|---|----------------|--------|--|---|
| 1 | <b>R150692</b> | 150692 | Roller - Smooth Heavy Duty Tubular Steel | 0 |
|---|----------------|--------|--|---|

*Detail Description: Constructed with a through shaft, this heavy duty roller uses tapered bearings for extended life.:*

|   |                 |                    |                               |   |
|---|-----------------|--------------------|-------------------------------|---|
| 2 | <b>R52-3120</b> | 52-3120,<br>Oct-70 | Roller - Smooth Tubular Steel | 0 |
|---|-----------------|--------------------|-------------------------------|---|

*Detail Description: Constructed with "water-pump" style bearings.:*

|   |                |        |                             |   |
|---|----------------|--------|-----------------------------|---|
| 3 | <b>R150300</b> | 150300 | Roller - Smooth Solid Steel | 0 |
|---|----------------|--------|-----------------------------|---|

*Detail Description: Machined from solid steel, this heavy weight roller uses greasable "water-pump" style bearings.:*

|   |                |        |                                   |   |
|---|----------------|--------|-----------------------------------|---|
| 4 | <b>R150341</b> | 150341 | Roller - Smooth UHMW Polyethylene | 0 |
|---|----------------|--------|-----------------------------------|---|

*Detail Description: Machined from solid UHMW, this low maintenance roller uses a 1" solid stainless steel shaft and requires no grease. UHMW material prevents build-up of debris.:*

## Overhaul Kits

|    |                |  |                            |   |
|----|----------------|--|----------------------------|---|
| 20 | <b>R101395</b> |  | Overhaul Kit - UHMW Roller | 0 |
|----|----------------|--|----------------------------|---|

*Detail Description: Fits all R&R 2" Dia. Black UHMW Polyethylene Rollers. Includes 10 ea.: R150322 Roll Pins; 2 ea.: R3296-15 Locknuts, R150347T Teflon Seals, R150333 Thrust Washers, & R150334A Bronze Thrust Washers:*

|    |                |  |                       |   |
|----|----------------|--|-----------------------|---|
| 21 | <b>R100136</b> |  | Overhaul Kit - Roller | 0 |
|----|----------------|--|-----------------------|---|

*Detail Description: Includes 2 ea.: R150674 Wear Sleeves, R253-152 Seals, R253-117 Seals, R254-78 Bearings, R254-79 Bearing Cups, R3296-15 Locknuts & R302-5 Grease Fittings:*

|    |                 |                     |                                 |   |
|----|-----------------|---------------------|---------------------------------|---|
| 22 | <b>R53-9240</b> | 42-4820,<br>53-9240 | Scraper Kit - Rear Roller SET/3 | 1 |
|----|-----------------|---------------------|---------------------------------|---|

*Detail Description: Includes 12 ea: R19-9560 Spacer, R32152-4 Locknut, R400106 Bolt; 6 ea: R256-239 Bearing, R53-9250 Bracket; 3 ea: R19-9540 Spring, R19-9550 Spring, R42-4800 Scraper Bar:*

All original equipment manufacturers names and part numbers are used for identification purposes only, and we are in no way implying that our products are original equipment parts. Prices subject to change without notice.



# Replaces Toro Greensmaster 3150-Q Parts

SPA Cutting Unit - Models 04445, 04448 & 04450  
Rear Rollers



| Item No | R&R Part No. | OEM Part No. | Description | Qty Req | Order Quantity |
|---------|--------------|--------------|-------------|---------|----------------|
|---------|--------------|--------------|-------------|---------|----------------|

## Other Parts Available

|   |                 |  |                         |   |  |
|---|-----------------|--|-------------------------|---|--|
| 30  | <b>R21-8430</b> | 21-8430  | Bearing - Roller        | 2 |  |
| 31  | <b>R302-5</b>   | 21-6010,<br>302-11,<br>302-37,<br>302-47,<br>302-5,<br>302-57,<br>302-58,<br>302-6,<br>31-0300,<br>32-9660,<br>60-0800,<br>62-3880,<br>92-4181 | Fitting - Grease        | 2 |  |
| 32  | <b>R150693</b>  |  | Shaft - HD Rear Roller  | 1 |  |
| 33  | <b>R61-0380</b> | 61-0380  | Roller End - Cap Solid  | 2 |  |
| 34  | <b>R253-152</b> | 253-116,<br>253-152  | Seal - Inner Roller     | 2 |  |
| 35  | <b>R254-79</b>  | 01-103-0060,<br>01-103-0130,<br>1-633584,<br>252-106,<br>254-79,<br>32-7800,<br>32-9590  | Cup - Bearing           | 2 |  |
| <i>Detail Description: Use R254-79M installation mandrel to properly install race.:</i> |                 |  |                         |   |  |
| 36  | <b>R254-78</b>  | 01-102-0060,<br>01-102-0130,<br>1-633585,<br>254-78,<br>32-7790,<br>32-9580,<br>93-4813  | Tapered Bearing Cone    | 2 |  |
| 37  | <b>R253-117</b> | 253-117,<br>253-165  | Seal - Outer Triple Lip | 2 |  |

All original equipment manufacturers names and part numbers are used for identification purposes only, and we are in no way implying that our products are original equipment parts. Prices subject to change without notice.



# Replaces Toro Greensmaster 3150-Q Parts

SPA Cutting Unit - Models 04445, 04448 & 04450  
Rear Rollers



| Item No | R&R Part No. | OEM Part No.   | Description                   | Qty Req | Order Quantity |
|---------|--------------|--|-------------------------------|---------|----------------|
| 38      | R150674      |  | Sleeve - Wear 3/4 Plated      | 2       |                |
| 39      | R3296-15     | 116-7306,<br>32118-5,<br>32127-23,<br>32127-47,<br>3296-15 | Locknut - 3/4-16 Nylon Jam    | 2       |                |
| 42      | R42-4800     | 42-4800  | Bar - Scraper Rear Roller     | 1       |                |
| 43      | R400106      | 321-3,<br>513315,<br>908002P                               | Bolt - Hex HD 1/4-20 x 5/8    | 4       |                |
| 44      | R32152-4     | 32152-4  | Locknut - 1/4-20 All Metal    | 4       |                |
| 45      | R256-239     | 256-239  | Bearing                       | 2       |                |
| 46      | R19-9560     | 19-9560  | Spacer - Spring               | 4       |                |
| 47      | R19-9540     | 19-9540  | Spring - Torsion LH           | 1       |                |
| 48      | R19-9550     | 19-9550  | Spring - Torsion RH           | 1       |                |
| 49      | R150347T     |  | Seal - Nonstick Lip           | 2       |                |
| 50      | R150334A     |  | Washer - Thrust SAE660 Bronze | 2       |                |
| 51      | R150333      |  | Washer - Flat Keyed Outer SS  | 2       |                |
| 52      | R53-9250     | 53-9250  | Bracket - Scraper Mount       | 2       |                |

All original equipment manufacturers names and part numbers are used for identification purposes only, and we are in no way implying that our products are original equipment parts. Prices subject to change without notice.