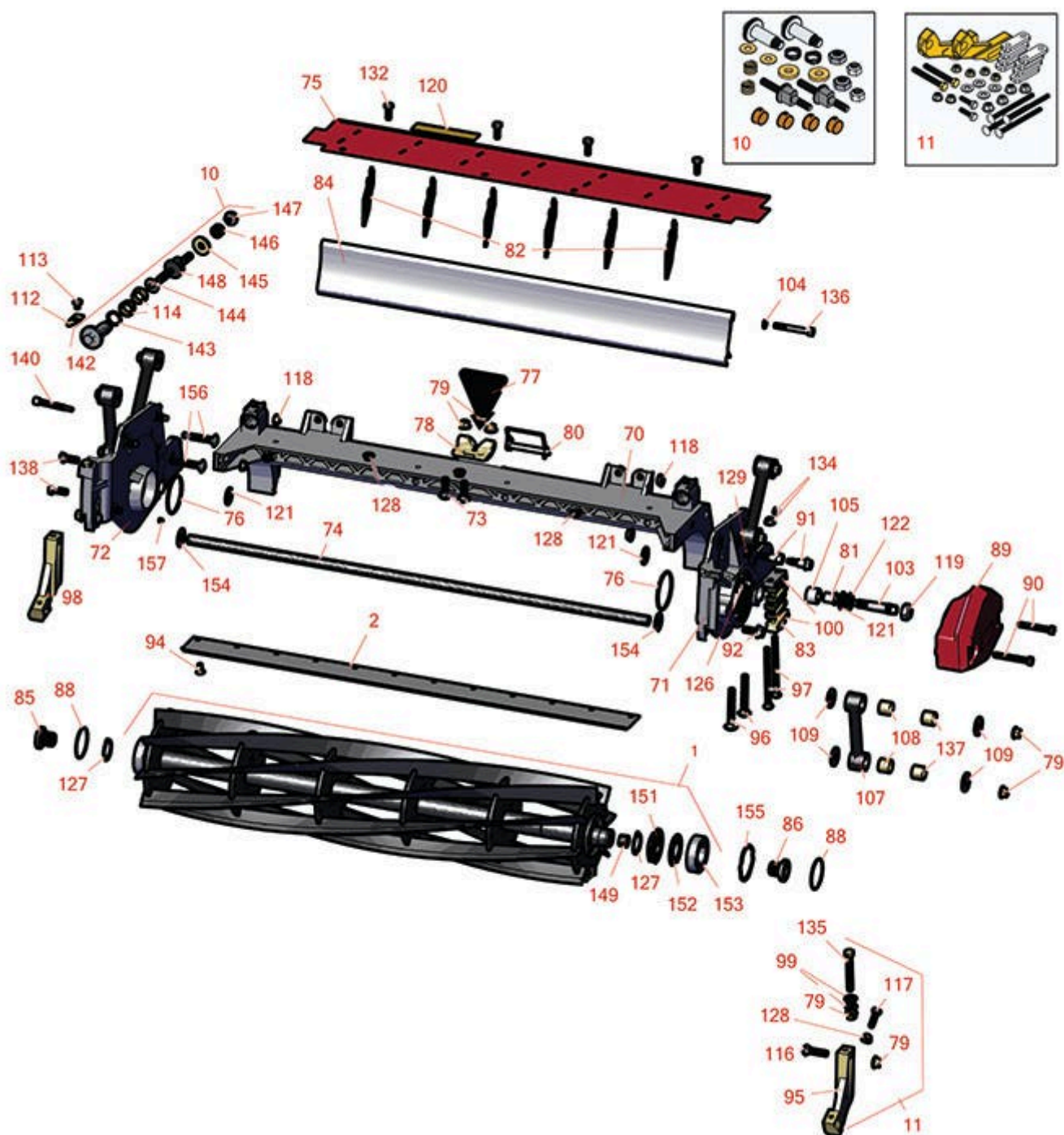


Reel & Bedknife





Replaces Toro Reelmaster 3105-D Parts

32in DPA Cutting Unit - Models 03191
Reel & Bedknife



Item No	R&R Part No.	OEM Part No.	Description	Qty Req	Order Quantity
---------	--------------	--------------	-------------	---------	----------------

R&R Reels, Lifetime Guaranteed

1	R137-8483	137-8483	Reel - 8 Blade Razor Series Radial (RR) w/Bearings and Seals 32x7	1	
---	------------------	----------	---	---	--

Detail Description: R&R Reel blades are expertly crafted from premium high carbon-boron alloy steel, heat-treated to perfectly complement both R&R and OEM bedknives. Each reel undergoes precision cylindrical grinding on bearing surfaces, followed by relief grinding for optimal performance. Advanced computer balancing ensures extended reel and bearing life. Backed by our lifetime guarantee against defects in materials and craftsmanship under normal use, R&R Reels deliver unmatched durability and cutting precision you can trust.:

1	R137-8482	137-8482	Reel - 5 Blade Razor Series Radial (RR) w/Bearings and Seals 32x7	1	
---	------------------	----------	---	---	--

Detail Description: R&R Reel blades are expertly crafted from premium high carbon-boron alloy steel, heat-treated to perfectly complement both R&R and OEM bedknives. Each reel undergoes precision cylindrical grinding on bearing surfaces, followed by relief grinding for optimal performance. Advanced computer balancing ensures extended reel and bearing life. Backed by our lifetime guarantee against defects in materials and craftsmanship under normal use, R&R Reels deliver unmatched durability and cutting precision you can trust.:

R&R Bedknives, Lifetime Guaranteed

2	R114-9389	114-9389	Bedknife - 32 in Unit - Standard	1	
---	------------------	----------	----------------------------------	---	--

Detail Description: R&R Bedknives are manufactured from high carbon-boron alloy steel and then hardened to RC46-49 to match the temper of our reel blades and original equipment reels. Bedknives are surface ground on the top and front edge and straightened three times before being packaged with oil for rust prevention. All R&R Bedknives now have an increased front edge grind for added life. All R&R Bedknives are guaranteed against defects in material and workmanship under normal use for the life of the part.:

2	R114-9391	114-9391	Bedknife - 32 in Unit - Heavy Duty	1	
---	------------------	----------	------------------------------------	---	--

Detail Description: R&R Bedknives are manufactured from high carbon-boron alloy steel and then hardened to RC46-49 to match the temper of our reel blades and original equipment reels. Bedknives are surface ground on the top and front edge and straightened three times before being packaged with oil for rust prevention. All R&R Bedknives now have an increased front edge grind for added life. All R&R Bedknives are guaranteed against defects in material and workmanship under normal use for the life of the part.:

R&R Razor Tool Steel Bedknives, Lifetime Guaranteed

2	R112-8956	112-8956	Bedknife - Razor Tool Steel - 32 x 3/8 Fairway	1	
---	------------------	----------	--	---	--

All original equipment manufacturers names and part numbers are used for identification purposes only, and we are in no way implying that our products are original equipment parts. Prices subject to change without notice.



Replaces Toro Reelmaster 3105-D Parts

32in DPA Cutting Unit - Models 03191
Reel & Bedknife



Item No	R&R Part No.	OEM Part No.	Description	Qty Req	Order Quantity
---------	--------------	--------------	-------------	---------	----------------

Detail Description: R&R Razor bedknives are manufactured from premium alloy tool steel steel and then hardened to RC48-51 to match the temper of our Razor reel blades and original equipment premium series reels. Bedknives are surface ground on the top and front edge and specially packaged for rust prevention. All R&R Bedknives now have an increased front edge grind for added life. All R&R Bedknives are guaranteed against defects in material and workmanship under normal use for the life of the part. You can expect up to double the life over standard bedknives.:

Overhaul Kits

10	R120-7230	120-7230	Overhaul Kit - Fits DPA Units	1	
----	------------------	----------	-------------------------------	---	--

Detail Description: Incl 2 ea.: R108-0015, R115-7039, R119-4155, R120-5116, R120-5118, R120-5120, R3296-33, R3296-48 & 4 ea: R106-5344:

11	R110-9600	110-9600	High HOC Kit	1	
----	------------------	----------	--------------	---	--

Detail Description: Includes 1 ea.: R120-0404, R120-0405 & 2 ea: R112-7451, R322-16, R445722 & 4 ea.: R106-9758, R104-8300, R453011, R104-8301 & 8 ea: R106-3925:

Other Parts Available

70	R112-8978	112-8978	Frame - Center 32 in Unit	1	
----	------------------	----------	---------------------------	---	--

71	R137-5976	137-5976	Side Plate Assy - 7 in LH Aluminum	1	
----	------------------	----------	------------------------------------	---	--

72	R137-5979	137-5979	Side Plate Assy - 7 in RH Aluminum	1	
----	------------------	----------	------------------------------------	---	--

73	R3231-25	01-173-0610, 30-9970, 3231-25, 3231-3, 900064P	Bolt - Carriage 3/8-16 x 1-1/4	2	
----	-----------------	--	--------------------------------	---	--

74	R112-8979	112-8979	Tube - Support - 32 in Units	1	
----	------------------	----------	------------------------------	---	--

75	R112-8983	112-8983	Front Grass Shield Assy - 32 in Units	1	
----	------------------	----------	---------------------------------------	---	--

76	R117-8177	117-8177	O-Ring	2	
----	------------------	----------	--------	---	--

77	R110-4088-03	110-4088-03, 119-8010-03	Kickstand	1	
----	---------------------	-----------------------------	-----------	---	--

All original equipment manufacturers names and part numbers are used for identification purposes only, and we are in no way implying that our products are original equipment parts. Prices subject to change without notice.



Replaces Toro Reelmaster 3105-D Parts

32in DPA Cutting Unit - Models 03191

Reel & Bedknife



Item No	R&R Part No.	OEM Part No.	Description	Qty Req	Order Quantity
78	R110-4058	110-4058	Bracket - Chain	1	
79	R104-8301	104-8301, 104-9301, 109-6658, 133-7570	Locknut - 3/8-16 Nylon Flanged	10	
80	R107-7400	107-7400	Pin - Lynch	1	
81	R56-9520	56-9520	Bushing - Nyliner	2	
82	R110-1706	110-1706	Deflector	6	
83	R106-3924	106-3924	Bracket - Rear Roller	2	
84	R125-1998	125-1998	Grass Shield - Rear	1	
85	R127-7109	127-7109	Insert-Threaded - 7 in Reel (RH)	1	
86	R127-7111	127-7111	Insert-Threaded - 7 in Reel (LH)	1	
88	R112-6967	112-6967	O-Ring	2	
89	R119-0614-01	119-0614-01	Weight	1	
90	R101526	01-150-0970, 01-178-0620, 20-53-AGD, 321-11, 3224-8, 323-11, 323-12, 323-31, 323-4, 323-47	Bolt - Hex HD 3/8-16 x 2-1/2 GR5	2	
91	R107-2979	107-2979	Bolt - Shoulder	6	
92	R3234-11	3234-11	Bolt - Hex Washer HD	2	
94	R119-4151	119-4151	Screw - Bedknife 5/16-18 x 17/32	10	

All original equipment manufacturers names and part numbers are used for identification purposes only, and we are in no way implying that our products are original equipment parts. Prices subject to change without notice.



Replaces Toro Reelmaster 3105-D Parts

32in DPA Cutting Unit - Models 03191
Reel & Bedknife



Item No	R&R Part No.	OEM Part No.	Description	Qty Req	Order Quantity
94	R150476	3-3816, 3-6462, 57-4910	Screw - Bedknife 5/16-18 x 5/8	10	
95	R120-0404	120-0404	Bracket- High HOC - LH	1	
<i>Detail Description: Fits 2011 & Newer:</i>					
96	R3230-26	3230-26	Screw - Carriage 5/16-18 x 3	4	
97	R106-9758		Bolt - Carriage 5/16x4	4	
97	R3230-30	3230-30	Bolt - Carriage 5/16x4 1/2	4	
98	R120-0405	120-0405	Bracket - High HOC - RH	1	
<i>Detail Description: Fits 2011 & Newer:</i>					
99	R453011	01-166-0100, 01-166-0120, 01-166-0270, 01-166-0500, 01-166-0600, 01-166-0620, 132-4593, 2356-3, 237-12, 24-10-AD, 24-11-AD, 24-11-BD, 24-12-AD, 24-12-BD, 30-9310, 32-8190, 3256-24, 3256-3, 3256-36, 3256-4, 453011, 47-9950, 48-9220, 513458, 7-0052	Washer - Flat 3/8 SAE Y/Zinc	4	
100	R119-0626	119-0626	Shim - Roller - 1/4 in - Slotted	8	

All original equipment manufacturers names and part numbers are used for identification purposes only, and we are in no way implying that our products are original equipment parts. Prices subject to change without notice.



Replaces Toro Reelmaster 3105-D Parts

32in DPA Cutting Unit - Models 03191

Reel & Bedknife



Item No	R&R Part No.	OEM Part No.	Description	Qty Req	Order Quantity
103	R106-9623	106-9623	Bolt - Bedbar	2	
104	R3256-74	3256-74	Washer - Flat	1	
105	R106-9618	106-9618	Bushing - Rubber	2	
107	R16-9759	16-9759	Link Assy	4	
108	R93-6981	93-6981	Spacer	8	
109	R93-8806	93-8806	Washer-Hardened	16	
112	R99-2097	99-2097	Detent - Bed Bar Adjuster	2	
113	R114-9396	114-9396, 119-4067	Bolt - Hex HD 5/16-18 x 3/8	2	
114	R106-5344	106-5344	Bushing - Flanged and Keyed	4	
116	R3231-4	01-157-0440, 01-173-0612, 3231-4	Bolt - Carriage 3/8-16 x 1-1/2	2	
117	R322-16	322-16, Apr-00	Bolt - Hex HD 5/16-18 x 1-1/8	2	
118	R32128-43	30-8990, 32128-43, 3290-357	Nut - Flanged Whiz - 3/8-16	6	
118	R3296-39	32127-25, 32128-36, 3290-357, 3296-17, 3296-22, 3296-39, 915663P, 99-7443	Locknut - 3/8-16 Nylon	6	
119	R3296-33	3296-33	Locknut - 5/8-18 ESNA Jam	2	
120	R93-6688	93-6688	Decal - Warning	1	

Tech Note: Up to Serial #405170001:

All original equipment manufacturers names and part numbers are used for identification purposes only, and we are in no way implying that our products are original equipment parts. Prices subject to change without notice.



Replaces Toro Reelmaster 3105-D Parts

32in DPA Cutting Unit - Models 03191

Reel & Bedknife



Item No	R&R Part No.	OEM Part No.	Description	Qty Req	Order Quantity
120	R137-9706	137-9706	Decal- Warning	1	
<i>Tech Note: Serial #405170001 & Up:</i>					
121	R61-1950	61-1950	Washer - Nylon - Bed Bar	4	
122	R453017	01-166-0050, 01-166-0240, 01-166-0800, 24-13-AD, 24-14-AD, 32-8110, 3256-26, 3256-6, 453017, 69-8980, 87-7270	Washer - Flat 1/2	2	
126	R302-5	21-6010, 302-11, 302-37, 302-47, 302-5, 302-57, 302-58, 302-6, 31-0300, 32-9660, 60-0800, 62-3880, 92-4181	Fitting - Grease	2	
127	R92-2601	92-2601	Snap Ring	2	
128	R445722	30-8980, 32128-2, 32128-20, 32128-20	Nut - Serrated Washer	6	
129	R170714	302-34, 302-39, 62-3520	Fitting - Pressure Relief	2	
132	R3234-7	3234-7	Bolt - Hex Washer HD 5/16-18 x 5/8	4	

All original equipment manufacturers names and part numbers are used for identification purposes only, and we are in no way implying that our products are original equipment parts. Prices subject to change without notice.



Replaces Toro Reelmaster 3105-D Parts

32in DPA Cutting Unit - Models 03191

Reel & Bedknife



Item No	R&R Part No.	OEM Part No.	Description	Qty Req	Order Quantity
134	R104-8300	104-8300, 104-8300 , 119-4041	Locknut - 5/16-18 Flanged Y/Zinc	6	
135	R112-7451	100-9429, 112-7451	Bolt - Hex Tap 3/8-16 x 2-3/4	2	
136	R322-14	01-150-0830, 01-178-0524, 30-8900, 322-14	Bolt - Hex HD 5/16-18 x 3 GR5	1	
137	R94-8945	94-8945	Bushing - Bronze - Link Bar	8	
138	R323-6	01-150-0010, 01-178-0608, 20-47-AD, 20-47-AGD, 3224-2, 323-6, 49-3510, 908034P, 908332	Bolt - Hex HD 3/8-16 x 1 GR5 YZ	2	
140	R107-7773	107-7773	Bolt - Soc HD Cap 5/16-18 x 2-1/2	1	
142	R120-5118	120-5118	Shaft - Adjuster	2	
<i>Detail Description: 2012 & Newer:</i>					
143	R120-5116	120-5116	Washer - Wave	2	
144	R108-0015	108-0015	Washer - Flat	2	
145	R119-4155	119-4155	Washer - Hardened	2	
146	R120-5120	120-5120	Spring - Compression	2	
147	R3296-48	119-4039, 32146-7, 3296-34, 3296-48	Locknut - 7/16-14 ESNA	2	
148	R115-7039	115-7039	Screw - Adjuster - Bedbar	2	

All original equipment manufacturers names and part numbers are used for identification purposes only, and we are in no way implying that our products are original equipment parts. Prices subject to change without notice.



Replaces Toro Reelmaster 3105-D Parts

32in DPA Cutting Unit - Models 03191

Reel & Bedknife



Item No	R&R Part No.	OEM Part No.	Description	Qty Req	Order Quantity
149	R151064	127-7118	Plug - Rubber - Fits R&R Reel Shaft Only	2	
151	R127-4284	127-4284	Washer - Special	2	
152	R115-3299	115-3299	Seal- Flocked	2	
153	R115-3296	115-3296	Bearing	2	
154	R130-8094	130-8094	Washer	2	
155	R105-5700	105-5700, 115-5258	Wave Washer - Bearing	1	
156	R3231-40	3231-40	Bolt - Carriage 3/8-16 x 2 1/4	8	
157	R3245-35	3245-35	Screw - Set 1/4-28 x 1/4	1	

All original equipment manufacturers names and part numbers are used for identification purposes only, and we are in no way implying that our products are original equipment parts. Prices subject to change without notice.