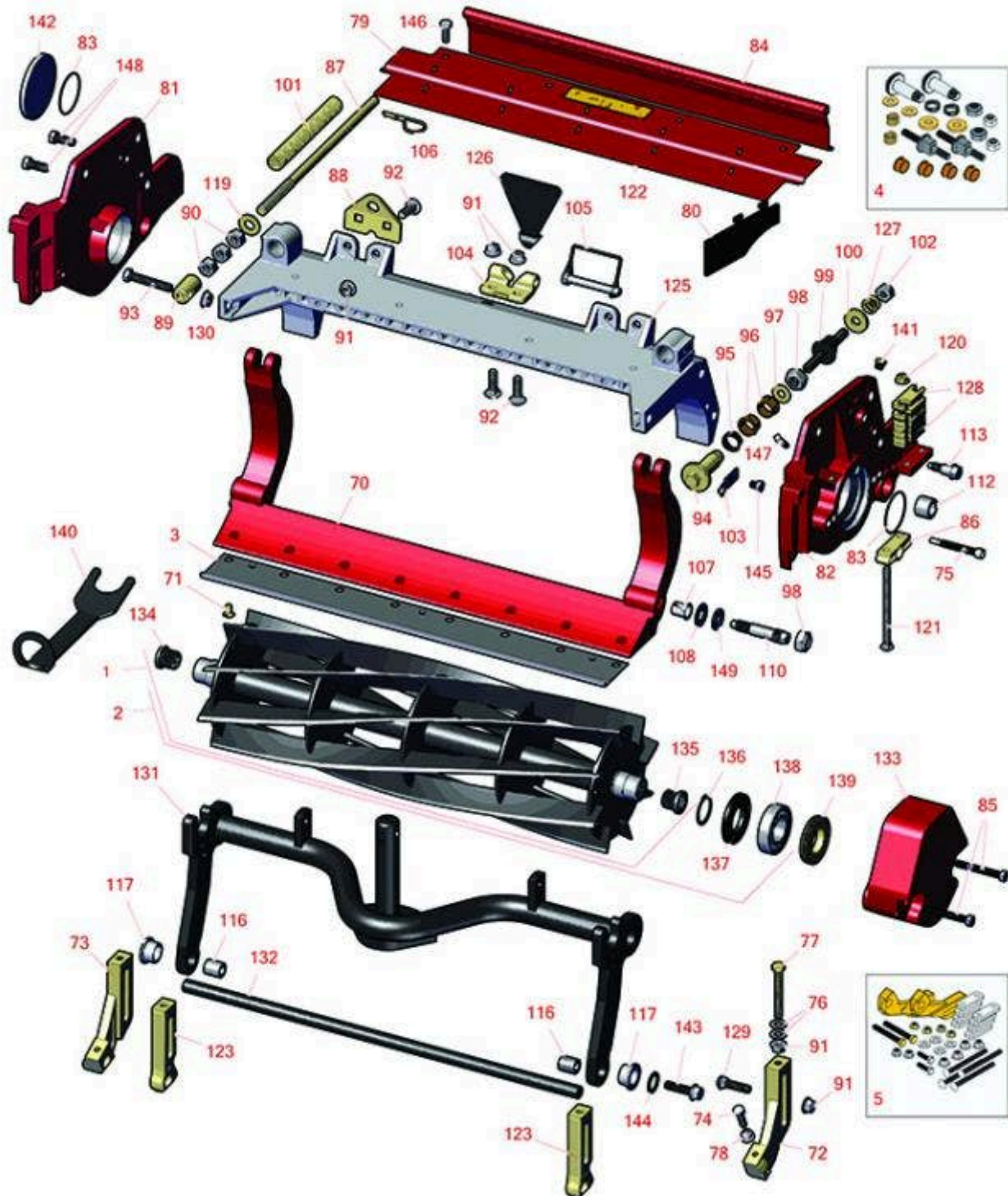




Replaces Toro Reelmaster 5410-D Parts

DPA Cutting Unit with 7" Reel - Models 03681, 03682, 03696
& 03697

Reel & Bedknife



All original equipment manufacturers names and part numbers are used for identification purposes only, and we are in no way implying that our products are original equipment parts. Prices subject to change without notice.



Replaces Toro Reelmaster 5410-D Parts

DPA Cutting Unit with 7" Reel - Models 03681, 03682, 03696 & 03697

Reel & Bedknife



Item No	R&R Part No.	OEM Part No.	Description	Qty Req	Order Quantity
---------	--------------	--------------	-------------	---------	----------------

R&R Reels, Lifetime Guaranteed

1	R127-2077	127-2077	Reel - 5 Blade Radial 22x7	1
---	------------------	----------	----------------------------	---

Detail Description: R&R Reel blades are manufactured from high carbon-boron alloy steel and then hardened to RC46-49 to match the temper of our bedknives and original equipment bedknives. All R&R Reels are cylindrically ground on bearing surfaces and then relief ground. Reels are then precision computer balanced for extended bearing and reel life. R&R Products Reels are guaranteed against defects in material and workmanship for the life of the reel under normal use.:

1	R107-3264	107-3264	Reel - 8 Blade 22x7	1
---	------------------	----------	---------------------	---

Detail Description: R&R Reel blades are manufactured from high carbon-boron alloy steel and then hardened to RC46-49 to match the temper of our bedknives and original equipment bedknives. All R&R Reels are cylindrically ground on bearing surfaces and then relief ground. Reels are then precision computer balanced for extended bearing and reel life. R&R Products Reels are guaranteed against defects in material and workmanship for the life of the reel under normal use.:

1	R117-0980	117-0980	Reel - 11 Blade 22x7	1
---	------------------	----------	----------------------	---

Detail Description: R&R Reel blades are manufactured from high carbon-boron alloy steel and then hardened to RC46-49 to match the temper of our bedknives and original equipment bedknives. All R&R Reels are cylindrically ground on bearing surfaces and then relief ground. Reels are then precision computer balanced for extended bearing and reel life. R&R Products Reels are guaranteed against defects in material and workmanship for the life of the reel under normal use.:

1	R127-0294	127-0294	Reel - 11 Blade Razor Series Forward Swept Low Drag 22x7	1
---	------------------	----------	---	---

Detail Description: R&R Razor Reels are manufactured from a special high alloy steel and then hardened to RC48-51 to match the temper of our Razor bedknives and original equipment premium series bedknives. All R&R Reels are cylindrically ground on bearing surfaces, relief ground and precision computer balanced for extended bearing and reel life. R&R Products Reels are guaranteed against defects in material and workmanship for the life of the reel under normal use. You can expect up to double the life from Razor reels over standard reels.:

2	R137-8437	137-8437	Reel - 5 Blade Razor Series Radial Low Drag (RR) w/Bearings and Seals 22x7	1
---	------------------	----------	--	---

All original equipment manufacturers names and part numbers are used for identification purposes only, and we are in no way implying that our products are original equipment parts. Prices subject to change without notice.



Replaces Toro Reelmaster 5410-D Parts

DPA Cutting Unit with 7" Reel - Models 03681, 03682, 03696 & 03697

Reel & Bedknife



Item No	R&R Part No.	OEM Part No.	Description	Qty Req	Order Quantity
---------	--------------	--------------	-------------	---------	----------------

Detail Description: R&R Razor Reels are manufactured from a special high alloy steel and then hardened to RC48-51 to match the temper of our Razor bedknives and original equipment premium series bedknives. All R&R Reels are cylindrically ground on bearing surfaces, relief ground and precision computer balanced for extended bearing and reel life. R&R Products Reels are guaranteed against defects in material and workmanship for the life of the reel under normal use. You can expect up to double the life from Razor reels over standard reels.:

2	R137-8432	137-8432	Reel - 8 Blade Radial w/Bearings and Seals 22x7	1	
---	------------------	----------	--	---	--

Detail Description: R&R Reel blades are expertly crafted from premium high carbon-boron alloy steel, heat-treated to perfectly complement both R&R and OEM bedknives. Each reel undergoes precision cylindrical grinding on bearing surfaces, followed by relief grinding for optimal performance. Advanced computer balancing ensures extended reel and bearing life. Backed by our lifetime guarantee against defects in materials and craftsmanship under normal use, R&R Reels deliver unmatched durability and cutting precision you can trust.:

2	R137-8433	137-8433	Reel - 11 Blade Radial w/Bearings and Seals 22x7	1	
---	------------------	----------	---	---	--

Detail Description: R&R Reel blades are expertly crafted from premium high carbon-boron alloy steel, heat-treated to perfectly complement both R&R and OEM bedknives. Each reel undergoes precision cylindrical grinding on bearing surfaces, followed by relief grinding for optimal performance. Advanced computer balancing ensures extended reel and bearing life. Backed by our lifetime guarantee against defects in materials and craftsmanship under normal use, R&R Reels deliver unmatched durability and cutting precision you can trust.:

2	R137-8439	137-8439	Reel - 11 Blade Razor Series Forward Swept Low Drag (Fsr) w/Bearings and Seals 22x7	1	
---	------------------	----------	---	---	--

Detail Description: R&R Razor Reels are manufactured from a special high alloy steel and then hardened to RC48-51 to match the temper of our Razor bedknives and original equipment premium series bedknives. All R&R Reels are cylindrically ground on bearing surfaces, relief ground and precision computer balanced for extended bearing and reel life. R&R Products Reels are guaranteed against defects in material and workmanship for the life of the reel under normal use. You can expect up to double the life from Razor reels over standard reels.:

R&R Bedknives, Lifetime Guaranteed

3	R110-4074	110-4074	Bedknife - High Cut	1	
---	------------------	----------	---------------------	---	--

All original equipment manufacturers names and part numbers are used for identification purposes only, and we are in no way implying that our products are original equipment parts. Prices subject to change without notice.



Replaces Toro Reelmaster 5410-D Parts

DPA Cutting Unit with 7" Reel - Models 03681, 03682, 03696 & 03697

Reel & Bedknife



Item No	R&R Part No.	OEM Part No.	Description	Qty Req	Order Quantity
---------	--------------	--------------	-------------	---------	----------------

Detail Description: R&R Bedknives are manufactured from high carbon-boron alloy steel and then hardened to RC46-49 to match the temper of our reel blades and original equipment reels. Bedknives are surface ground on the top and front edge and straightened three times before being packaged with oil for rust prevention. All R&R Bedknives now have an increased front edge grind for added life. All R&R Bedknives are guaranteed against defects in material and workmanship under normal use for the life of the part.:

3	R108-9096	108-9096	Bedknife - Standard	1	
---	------------------	----------	---------------------	---	--

Detail Description: R&R Bedknives are manufactured from high carbon-boron alloy steel and then hardened to RC46-49 to match the temper of our reel blades and original equipment reels. Bedknives are surface ground on the top and front edge and straightened three times before being packaged with oil for rust prevention. All R&R Bedknives now have an increased front edge grind for added life. All R&R Bedknives are guaranteed against defects in material and workmanship under normal use for the life of the part.:

3	R110-4084	110-4084	Bedknife - Low Cut	1	
---	------------------	----------	--------------------	---	--

Detail Description: R&R Bedknives are manufactured from high carbon-boron alloy steel and then hardened to RC46-49 to match the temper of our reel blades and original equipment reels. Bedknives are surface ground on the top and front edge and straightened three times before being packaged with oil for rust prevention. All R&R Bedknives now have an increased front edge grind for added life. All R&R Bedknives are guaranteed against defects in material and workmanship under normal use for the life of the part.:

3	R120-1640	120-1640	Bedknife - Low Cut Extended	1	
---	------------------	----------	-----------------------------	---	--

Detail Description: R&R Bedknives are manufactured from high carbon-boron alloy steel and then hardened to RC46-49 to match the temper of our reel blades and original equipment reels. Bedknives are surface ground on the top and front edge and straightened three times before being packaged with oil for rust prevention. All R&R Bedknives now have an increased front edge grind for added life. All R&R Bedknives are guaranteed against defects in material and workmanship under normal use for the life of the part.:

R&R Razor Tool Steel Bedknives, Lifetime Guaranteed

3	R108-9095	108-9095, 137-0833	Bedknife - Razor Tool Steel - 22 High Cut	1	
---	------------------	-----------------------	--	---	--

All original equipment manufacturers names and part numbers are used for identification purposes only, and we are in no way implying that our products are original equipment parts. Prices subject to change without notice.



Replaces Toro Reelmaster 5410-D Parts

DPA Cutting Unit with 7" Reel - Models 03681, 03682, 03696 & 03697

Reel & Bedknife



Item No	R&R Part No.	OEM Part No.	Description	Qty Req	Order Quantity
---------	--------------	--------------	-------------	---------	----------------

Detail Description: R&R Razor bedknives are manufactured from premium alloy tool steel steel and then hardened to RC48-51 to match the temper of our Razor reel blades and original equipment premium series reels. Bedknives are surface ground on the top and front edge and specially packaged for rust prevention. All R&R Bedknives now have an increased front edge grind for added life. All R&R Bedknives are guaranteed against defects in material and workmanship under normal use for the life of the part. You can expect up to double the life over standard bedknives.:

3	R119-4280	119-4280	Bedknife - Razor Tool Steel - 22 x 3/8 Extended	1	
---	------------------	----------	---	---	--

Detail Description: R&R Razor bedknives are manufactured from premium alloy tool steel steel and then hardened to RC48-51 to match the temper of our Razor reel blades and original equipment premium series reels. Bedknives are surface ground on the top and front edge and specially packaged for rust prevention. All R&R Bedknives now have an increased front edge grind for added life. All R&R Bedknives are guaranteed against defects in material and workmanship under normal use for the life of the part. You can expect up to double the life over standard bedknives.:

3	R137-0832	125-2771, 127-7132, 137-0832	Bedknife - Razor Tool Steel - 3/8 x 22 Lowcut	1	
---	------------------	------------------------------------	---	---	--

Overhaul Kits

4	R120-7230	120-7230	Overhaul Kit - Fits DPA Units	1	
---	------------------	----------	-------------------------------	---	--

Detail Description: Incl 2 ea.: R108-0015, R115-7039, R119-4155, R120-5116, R120-5118, R120-5120, R3296-33, R3296-48 & 4 ea: R106-5344:

5	R110-9600	110-9600	High HOC Kit	1	
---	------------------	----------	--------------	---	--

Detail Description: Includes 1 ea.: R120-0404, R120-0405 & 2 ea: R112-7451, R322-16, R445722 & 4 ea.: R106-9758, R104-8300, R453011, R104-8301 & 8 ea: R106-3925:

Other Parts Available

70	R107-3273-01	107-3273-01	Bed Bar - Fits OEM Units Only	1	
----	---------------------	-------------	-------------------------------	---	--

71	R119-4151	119-4151	Screw - Bedknife 5/16-18 x 17/32	8	
----	------------------	----------	----------------------------------	---	--

72	R120-0404	120-0404	Bracket- High HOC - LH	1	
----	------------------	----------	------------------------	---	--

All original equipment manufacturers names and part numbers are used for identification purposes only, and we are in no way implying that our products are original equipment parts. Prices subject to change without notice.



Replaces Toro Reelmaster 5410-D Parts

DPA Cutting Unit with 7" Reel - Models 03681, 03682, 03696
& 03697

Reel & Bedknife



Item No	R&R Part No.	OEM Part No.	Description	Qty Req	Order Quantity
<i>Detail Description: Fits 2011 & Newer:</i>					
73	R120-0405	120-0405	Bracket - High HOC - RH	1	
<i>Detail Description: Fits 2011 & Newer:</i>					
74	R322-16	322-16, Apr-00	Bolt - Hex HD 5/16-18 x 1-1/8	2	
75	R107-7773	107-7773	Bolt - Soc HD Cap 5/16-18 x 2-1/2	1	
76	R453011	01-166-0100, 01-166-0120, 01-166-0270, 01-166-0500, 01-166-0600, 01-166-0620, 132-4593, 2356-3, 237-12, 24-10-AD, 24-11-AD, 24-11-BD, 24-12-AD, 24-12-BD, 30-9310, 32-8190, 3256-24, 3256-3, 3256-36, 3256-4, 453011, 47-9950, 48-9220, 513458, 7-0052	Washer - Flat 3/8 SAE Y/Zinc	4	
77	R112-7451	100-9429, 112-7451	Bolt - Hex Tap 3/8-16 x 2-3/4	2	
78	R445722	30-8980, 32128-2, 32128-20, 32128-20	Nut - Serrated Washer	2	

All original equipment manufacturers names and part numbers are used for identification purposes only, and we are in no way implying that our products are original equipment parts. Prices subject to change without notice.



Replaces Toro Reelmaster 5410-D Parts

DPA Cutting Unit with 7" Reel - Models 03681, 03682, 03696 & 03697

Reel & Bedknife



Item No	R&R Part No.	OEM Part No.	Description	Qty Req	Order Quantity
79	R107-2996	107-2996	Grass Shield - Front	1	
80	R110-1706	110-1706	Deflector	5	
81	R108-9083	108-9083	Side Plate - RH - Fits OEM Units Only	1	
82	R108-9082	108-9082	Side Plate - LH - Fits OEM Units Only	1	
83	R112-6967	112-6967	O-Ring	2	
84	R107-7779-01	107-7779-01	Grass Shield Assy - Rear	1	
85	R101526	01-150-0970, 01-178-0620, 20-53-AGD, 321-11, 3224-8, 323-11, 323-12, 323-31, 323-4, 323-47	Bolt - Hex HD 3/8-16 x 2-1/2 GR5	2	
86	R106-3924	106-3924	Bracket - Rear Roller	2	
87	R115-2007	107-7437, 115-2007	Rod - Spring	1	
88	R110-4069	110-4069	Bracket	1	
89	R99-8662	99-8662	Tube - Spring	1	
90	R443818	01-191-0813, 3218-18, 3218-5	Nut - 1/2-13 Hex Jam Zinc	3	
91	R104-8301	104-8301, 104-9301, 109-6658, 133-7570	Locknut - 3/8-16 Nylon Flanged	8	

All original equipment manufacturers names and part numbers are used for identification purposes only, and we are in no way implying that our products are original equipment parts. Prices subject to change without notice.



Replaces Toro Reelmaster 5410-D Parts

DPA Cutting Unit with 7" Reel - Models 03681, 03682, 03696
& 03697

Reel & Bedknife



Item No	R&R Part No.	OEM Part No.	Description	Qty Req	Order Quantity
92	R3231-25	01-173-0610, 30-9970, 3231-25, 3231-3, 900064P	Bolt - Carriage 3/8-16 x 1-1/4	4	
93	R104-3396	104-3396	Bolt - Hex HD 3/8-16 x 2-1/4	1	
94	R120-5118	120-5118	Shaft - Adjuster	2	
<i>Tech Note: Fits 2012 and Up:</i>					
<i>Detail Description: 2012 & Newer:</i>					
94	R106-5363	106-5363	Shaft - Adjusting - Bed Bar - Stainless	2	
<i>Tech Note: Fits 2009-2011:</i>					
95	R120-5116	120-5116	Washer - Wave	2	
<i>Tech Note: Fits 2012 and Up:</i>					
95	R106-5335	106-5335	Wave Washer - Reel Adjusting	2	
<i>Tech Note: Fits 2009-2011:</i>					
96	R106-5344	106-5344	Bushing - Flanged and Keyed	4	
97	R108-0015	108-0015	Washer - Flat	2	
98	R3296-33	3296-33	Locknut - 5/8-18 ESNA Jam	4	
99	R115-7039	115-7039	Screw - Adjuster - Bedbar	2	
<i>Tech Note: Fits 2012 and Up:</i>					
99	R99-2096	99-2096	Screw - Bed Bar Adjustment - M10 Thrd 1 End	2	
<i>Tech Note: Fits 2009-2011:</i>					
100	R119-4155	119-4155	Washer - Hardened	2	

All original equipment manufacturers names and part numbers are used for identification purposes only, and we are in no way implying that our products are original equipment parts. Prices subject to change without notice.



Replaces Toro Reelmaster 5410-D Parts

DPA Cutting Unit with 7" Reel - Models 03681, 03682, 03696
& 03697
Reel & Bedknife



Item No	R&R Part No.	OEM Part No.	Description	Qty Req	Order Quantity
<i>Tech Note: Fits 2012 and Up:</i>					
100	R99-2098	99-2098	Washer - Bed Bar Adjuster	2	
<i>Tech Note: Fits 2009-2011:</i>					
101	R110-4079	110-4079	Spring	1	
102	R3296-48	119-4039, 32146-7, 3296-34, 3296-48	Locknut - 7/16-14 ESNA	2	
103	R99-2097	99-2097	Detent - Bed Bar Adjuster	2	
104	R110-4058	110-4058	Bracket - Chain	1	
105	R107-7400	107-7400	Pin - Lynch	1	
106	R92-2762	92-2762	Pin - Snap	1	
107	R56-9520	56-9520	Bushing - Nyliner	2	
108	R61-1950	61-1950	Washer - Nylon - Bed Bar	4	
110	R106-9623	106-9623	Bolt - Bedbar	2	
112	R106-9618	106-9618	Bushing - Rubber	2	
113	R107-2979	107-2979	Bolt - Shoulder	4	
116	R108-4279	108-4279	Spacer - Frame	2	
117	R93-2877	93-2877	Bushing - Flanged	2	
119	R87-7270-01	87-7270	Washer - Flat 1/2	1	
120	R104-8300	104-8300, 104-8300 , 119-4041	Locknut - 5/16-18 Flanged Y/Zinc	4	
121	R3230-30	3230-30	Bolt - Carriage 5/16x4 1/2	4	

All original equipment manufacturers names and part numbers are used for identification purposes only, and we are in no way implying that our products are original equipment parts. Prices subject to change without notice.



Replaces Toro Reelmaster 5410-D Parts

DPA Cutting Unit with 7" Reel - Models 03681, 03682, 03696 & 03697

Reel & Bedknife



Item No	R&R Part No.	OEM Part No.	Description	Qty Req	Order Quantity
122	R93-6688	93-6688	Decal - Warning	1	
123	R125-2796	125-2796	Bracket- Front HOC	2	
<i>Tech Note: Fits 2013 and Up:</i>					
<i>Detail Description: Fits 2013 & Newer:</i>					
123	R107-2952	107-2952	Bracket - Front Roller	2	
<i>Tech Note: Fits 2009-2012:</i>					
125	R107-3258	107-3258	Frame	1	
126	R110-4088-03	110-4088-03, 119-8010-03	Kickstand	1	
127	R120-5120	120-5120	Spring - Compression	2	
<i>Tech Note: Fits 2012 and Up:</i>					
127	R99-3755	99-3755	Spring - Bed Bar Adjusting	2	
<i>Tech Note: Fits 2009-2011:</i>					
128	R119-0626	119-0626	Shim - Roller - 1/4 in - Slotted	8	
<i>Tech Note: Fits 2011 and Up:</i>					
128	R106-3925	106-3925	Shim - 1/4 - Rear Roller HOC	8	
<i>Tech Note: Fits 2009-2010:</i>					
129	R3231-4	01-157-0440, 01-173-0612, 3231-4	Bolt - Carriage 3/8-16 x 1-1/2	2	
130	R32128-43	30-8990, 32128-43, 3290-357	Nut - Flanged Whiz - 3/8-16	2	

All original equipment manufacturers names and part numbers are used for identification purposes only, and we are in no way implying that our products are original equipment parts. Prices subject to change without notice.



Replaces Toro Reelmaster 5410-D Parts

DPA Cutting Unit with 7" Reel - Models 03681, 03682, 03696
& 03697

Reel & Bedknife



Item No	R&R Part No.	OEM Part No.	Description	Qty Req	Order Quantity
130	R3296-39	32127-25, 32128-36, 3290-357, 3296-17, 3296-22, 3296-39, 915663P, 99-7443	Locknut - 3/8-16 Nylon	7	
131	R107-7433	107-7433	Carrier Frame Assy	1	
132	R108-4284	108-4284	Shaft - Support	1	
133	R108-4269-01	108-4269-01	Weight	1	
134	R107-3275	107-3275	Insert - Threaded - RH - 9 Tooth	1	
135	R107-3276	107-3276	Insert - Threaded - LH - 9 Tooth	1	
136	R92-2601	92-2601	Snap Ring	2	
137	R107-4028	105-6757, 107-4028	Seal - Grease	2	
138	R93-2489	93-2489	Bearing - Reel	2	
139	R107-2954	107-2954	Nut - Bearing Adjuster	2	
140	R117-0975	117-0975	Tool- Reel Bearing Installation	1	
141	R170714	302-34, 302-39, 62-3520	Fitting - Pressure Relief	1	
142	R94-2703	94-2703	Plug - Plastic Spindle Housing	1	
143	R3234-19	3234-19	Bolt - Hex Washer 3/8-16x1-3/4	2	
144	R67-9410	67-9410	Washer - Clevis Pin	1	

All original equipment manufacturers names and part numbers are used for identification purposes only, and we are in no way implying that our products are original equipment parts. Prices subject to change without notice.



Replaces Toro Reelmaster 5410-D Parts

DPA Cutting Unit with 7" Reel - Models 03681, 03682, 03696
& 03697

Reel & Bedknife



Item No	R&R Part No.	OEM Part No.	Description	Qty Req	Order Quantity
145	R114-9396	114-9396, 119-4067	Bolt - Hex HD 5/16-18 x 3/8	2	
146	R3234-7	3234-7	Bolt - Hex Washer HD 5/16-18 x 5/8	4	
<i>Tech Note: Fits 2010 and Up:</i>					
146	R3234-47	3234-47	Bolt - Flanged Hx HD	4	
<i>Tech Note: Fits 2009:</i>					
147	R107-7447	107-7447	Set Screw - 1/4 x 1-1/4 Sq HD	1	
148	R323-6	01-150-0010, 01-178-0608, 20-47-AD, 20-47-AGD, 3224-2, 323-6, 49-3510, 908034P, 908332	Bolt - Hex HD 3/8-16 x 1 GR5 YZ	2	
149	R3256-26	01-166-0540, 01-166-0820, 17-2530, 24-13-BD, 30-8570, 3256-26, 356206, 48-9390	Washer - 1/2 in	2	
149	R453017	01-166-0050, 01-166-0240, 01-166-0800, 24-13-AD, 24-14-AD, 32-8110, 3256-26, 3256-6, 453017, 69-8980, 87-7270	Washer - Flat 1/2	2	

All original equipment manufacturers names and part numbers are used for identification purposes only, and we are in no way implying that our products are original equipment parts. Prices subject to change without notice.