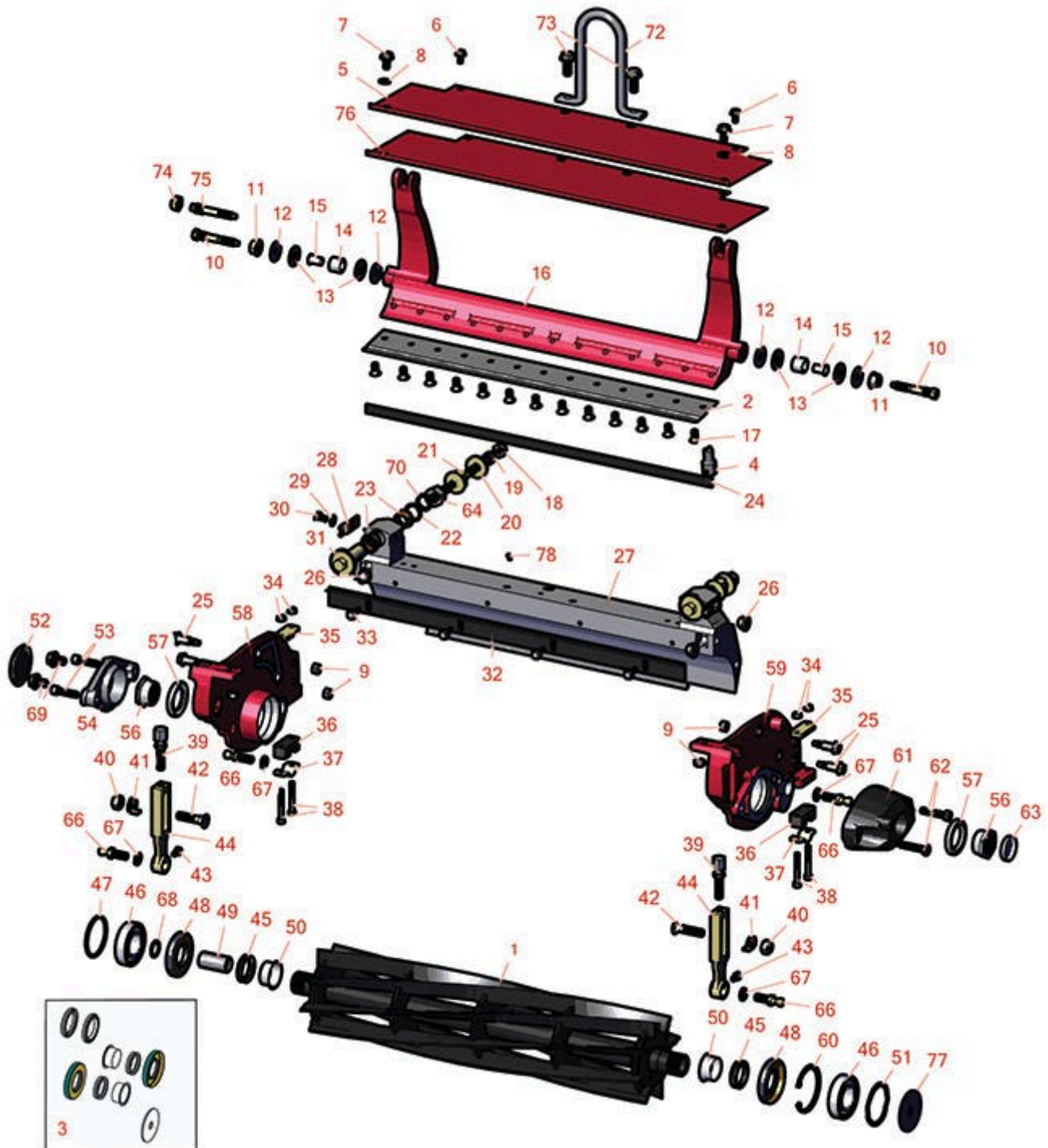




Replaces Toro Greensmaster 3250-D Parts

DPA Cutting Unit - Models 04610, 04611 & 04616
Reel & Bedknife



All original equipment manufacturers names and part numbers are used for identification purposes only, and we are in no way implying that our products are original equipment parts. Prices subject to change without notice.



Replaces Toro Greensmaster 3250-D Parts

DPA Cutting Unit - Models 04610, 04611 & 04616
Reel & Bedknife



Item No	R&R Part No.	OEM Part No.	Description	Qty Req	Order Quantity
---------	--------------	--------------	-------------	---------	----------------

R&R Reels, Lifetime Guaranteed

1	R105-5793	105-5793	Reel - 8 Blade	1
---	------------------	----------	----------------	---

Detail Description: R&R Reel blades are manufactured from high carbon-boron alloy steel and then hardened to RC46-49 to match the temper of our bedknives and original equipment bedknives. All R&R Reels are cylindrically ground on bearing surfaces and then relief ground. Reels are then precision computer balanced for extended bearing and reel life. R&R Products Reels are guaranteed against defects in material and workmanship for the life of the reel under normal use.:

1	R105-5792	105-5792	Reel - 11 Blade	1
---	------------------	----------	-----------------	---

Detail Description: R&R Reel blades are manufactured from high carbon-boron alloy steel and then hardened to RC46-49 to match the temper of our bedknives and original equipment bedknives. All R&R Reels are cylindrically ground on bearing surfaces and then relief ground. Reels are then precision computer balanced for extended bearing and reel life. R&R Products Reels are guaranteed against defects in material and workmanship for the life of the reel under normal use.:

1	R127-2194		Reel - 11 Blade Low Drag	1
---	------------------	--	--------------------------	---

Detail Description: R&R Reel blades are manufactured from high carbon-boron alloy steel and then hardened to RC46-49 to match the temper of our bedknives and original equipment bedknives. All R&R Reels are cylindrically ground on bearing surfaces and then relief ground. Reels are then precision computer balanced for extended bearing and reel life. R&R Products Reels are guaranteed against defects in material and workmanship for the life of the reel under normal use.:

1	R150748	R115-5370	Reel - 14 Blade Razor Series Low Drag 21	1
---	----------------	-----------	---	---

Detail Description: R&R Razor Reels are manufactured from a special high alloy steel and then hardened to RC48-51 to match the temper of our Razor bedknives and original equipment premium series bedknives. All R&R Reels are cylindrically ground on bearing surfaces, relief ground and precision computer balanced for extended bearing and reel life. R&R Products Reels are guaranteed against defects in material and workmanship for the life of the reel under normal use. You can expect up to double the life from Razor reels over standard reels.:

1	R115-5370	115-5370	Reel - 14 Blade	1
---	------------------	----------	-----------------	---

All original equipment manufacturers names and part numbers are used for identification purposes only, and we are in no way implying that our products are original equipment parts. Prices subject to change without notice.



Replaces Toro Greensmaster 3250-D Parts

DPA Cutting Unit - Models 04610, 04611 & 04616
Reel & Bedknife



Item No	R&R Part No.	OEM Part No.	Description	Qty Req	Order Quantity
---------	--------------	--------------	-------------	---------	----------------

Detail Description: R&R Reel blades are manufactured from high carbon-boron alloy steel and then hardened to RC46-49 to match the temper of our bedknives and original equipment bedknives. All R&R Reels are cylindrically ground on bearing surfaces and then relief ground. Reels are then precision computer balanced for extended bearing and reel life. R&R Products Reels are guaranteed against defects in material and workmanship for the life of the reel under normal use.:

R&R Bedknives, Lifetime Guaranteed

2	R150466	63-8600, 64-6393, 94-6393	Bedknife - Super Thick .312 - 1.00 HOC	1	
---	----------------	---------------------------------	---	---	--

Detail Description: R&R Bedknives are manufactured from high carbon-boron alloy steel and then hardened to RC46-49 to match the temper of our reel blades and original equipment reels. Bedknives are surface ground on the top and front edge and straightened three times before being packaged with oil for rust prevention. All R&R Bedknives now have an increased front edge grind for added life. All R&R Bedknives are guaranteed against defects in material and workmanship under normal use for the life of the part.:

2	R94-6392	62-2500, 94-6392	Bedknife - High Cut .312 - 1.00 HOC	1	
---	-----------------	---------------------	--	---	--

Detail Description: R&R Bedknives are manufactured from high carbon-boron alloy steel and then hardened to RC46-49 to match the temper of our reel blades and original equipment reels. Bedknives are surface ground on the top and front edge and straightened three times before being packaged with oil for rust prevention. All R&R Bedknives now have an increased front edge grind for added life. All R&R Bedknives are guaranteed against defects in material and workmanship under normal use for the life of the part.:

2	R93-4264	57-4960, 63-8470, 93-4264	Bedknife - Low Cut .187 - 1.00 HOC	1	
---	-----------------	---------------------------------	---------------------------------------	---	--

Detail Description: R&R Bedknives are manufactured from high carbon-boron alloy steel and then hardened to RC46-49 to match the temper of our reel blades and original equipment reels. Bedknives are surface ground on the top and front edge and straightened three times before being packaged with oil for rust prevention. All R&R Bedknives now have an increased front edge grind for added life. All R&R Bedknives are guaranteed against defects in material and workmanship under normal use for the life of the part.:

2	R93-4262	65-8250, 93-4262, 93-4263	Bedknife - Micro Cut .062 - .187 HOC	1	
---	-----------------	---------------------------------	---	---	--

All original equipment manufacturers names and part numbers are used for identification purposes only, and we are in no way implying that our products are original equipment parts. Prices subject to change without notice.



Replaces Toro Greensmaster 3250-D Parts

DPA Cutting Unit - Models 04610, 04611 & 04616
Reel & Bedknife



Item No	R&R Part No.	OEM Part No.	Description	Qty Req	Order Quantity
---------	--------------	--------------	-------------	---------	----------------

Detail Description: R&R Bedknives are manufactured from high carbon-boron alloy steel and then hardened to RC46-49 to match the temper of our reel blades and original equipment reels. Bedknives are surface ground on the top and front edge and straightened three times before being packaged with oil for rust prevention. All R&R Bedknives now have an increased front edge grind for added life. All R&R Bedknives are guaranteed against defects in material and workmanship under normal use for the life of the part.:

2	R108-4302	108-4301, 108-4302	Bedknife - Tournament Cut Extended .125 - .500 HOC	1	
---	------------------	-----------------------	---	---	--

Detail Description: R&R Bedknives are manufactured from high carbon-boron alloy steel and then hardened to RC46-49 to match the temper of our reel blades and original equipment reels. Bedknives are surface ground on the top and front edge and straightened three times before being packaged with oil for rust prevention. All R&R Bedknives now have an increased front edge grind for added life. All R&R Bedknives are guaranteed against defects in material and workmanship under normal use for the life of the part.:

2	R108-4303	104-7720, 108-4303	Bedknife - Micro Cut Extended .062 - .187 HOC	1	
---	------------------	-----------------------	--	---	--

Detail Description: R&R Bedknives are manufactured from high carbon-boron alloy steel and then hardened to RC46-49 to match the temper of our reel blades and original equipment reels. Bedknives are surface ground on the top and front edge and straightened three times before being packaged with oil for rust prevention. All R&R Bedknives now have an increased front edge grind for added life. All R&R Bedknives are guaranteed against defects in material and workmanship under normal use for the life of the part.:

2	R93-4263	63-8560, 66-9320, 93-4263, 93-6039	Bedknife - Tournament Cut .125 - .500 HOC	1	
---	-----------------	---	--	---	--

Detail Description: R&R Bedknives are manufactured from high carbon-boron alloy steel and then hardened to RC46-49 to match the temper of our reel blades and original equipment reels. Bedknives are surface ground on the top and front edge and straightened three times before being packaged with oil for rust prevention. All R&R Bedknives now have an increased front edge grind for added life. All R&R Bedknives are guaranteed against defects in material and workmanship under normal use for the life of the part.:

R&R Razor Tool Steel Bedknives, Lifetime Guaranteed

2	R115-1881	115-1881	Bedknife - Razor Tool Steel - 21 Tournament Cut .125 - .500 HOC	1	
---	------------------	----------	---	---	--

All original equipment manufacturers names and part numbers are used for identification purposes only, and we are in no way implying that our products are original equipment parts. Prices subject to change without notice.



Replaces Toro Greensmaster 3250-D Parts

DPA Cutting Unit - Models 04610, 04611 & 04616
Reel & Bedknife



Item No	R&R Part No.	OEM Part No.	Description	Qty Req	Order Quantity
---------	--------------	--------------	-------------	---------	----------------

Detail Description: R&R Razor bedknives are manufactured from premium alloy tool steel steel and then hardened to RC48-51 to match the temper of our Razor reel blades and original equipment premium series reels. Bedknives are surface ground on the top and front edge and specially packaged for rust prevention. All R&R Bedknives now have an increased front edge grind for added life. All R&R Bedknives are guaranteed against defects in material and workmanship under normal use for the life of the part. You can expect up to double the life over standard bedknives.:

2	R115-1880	115-1880	Bedknife - Razor Tool Steel - 21 Micro Cut .062 - .187 HOC	1	
---	------------------	----------	---	---	--

Detail Description: R&R Razor bedknives are manufactured from premium alloy tool steel steel and then hardened to RC48-51 to match the temper of our Razor reel blades and original equipment premium series reels. Bedknives are surface ground on the top and front edge and specially packaged for rust prevention. All R&R Bedknives now have an increased front edge grind for added life. All R&R Bedknives are guaranteed against defects in material and workmanship under normal use for the life of the part. You can expect up to double the life over standard bedknives.:

2	R150492	150492	Bedknife - Razor Tool Steel - 21 Micro Cut Ext	1	
---	----------------	--------	---	---	--

Detail Description: R&R Razor bedknives are manufactured from premium alloy tool steel steel and then hardened to RC48-51 to match the temper of our Razor reel blades and original equipment premium series reels. Bedknives are surface ground on the top and front edge and specially packaged for rust prevention. All R&R Bedknives now have an increased front edge grind for added life. All R&R Bedknives are guaranteed against defects in material and workmanship under normal use for the life of the part. You can expect up to double the life over standard bedknives.:

2	R112-7475	112-7475	Bedknife - Razor Tool Steel - 22 x 3/8 Fairway	1	
---	------------------	----------	---	---	--

Detail Description: R&R Razor bedknives are manufactured from premium alloy tool steel steel and then hardened to RC48-51 to match the temper of our Razor reel blades and original equipment premium series reels. Bedknives are surface ground on the top and front edge and specially packaged for rust prevention. All R&R Bedknives now have an increased front edge grind for added life. All R&R Bedknives are guaranteed against defects in material and workmanship under normal use for the life of the part. You can expect up to double the life over standard bedknives.:

Overhaul Kits

3	R106-6937	106-6937	Kit - Reel Seal	1	
---	------------------	----------	-----------------	---	--

All original equipment manufacturers names and part numbers are used for identification purposes only, and we are in no way implying that our products are original equipment parts. Prices subject to change without notice.



Replaces Toro Greensmaster 3250-D Parts

DPA Cutting Unit - Models 04610, 04611 & 04616
Reel & Bedknife



Item No	R&R Part No.	OEM Part No.	Description	Qty Req	Order Quantity
---------	--------------	--------------	-------------	---------	----------------

Detail Description: Includes: 2 ea: R106-6927 Sleeve, R106-6926 Inner Seal, R253-134 Outer Seal, R106-6929 V-Ring; & 1 ea: R104-0532 Washer:

Service Tools

4	R51-0880	51-0880	Bedknife Screw Driver Tool	1
---	-----------------	---------	----------------------------	---

Detail Description: Easily install and remove bed knife screws with the help of a ratchet with 3/8" drive. Tool manufactured with hardened alloy steel.:

Other Parts Available

5	R106-2600-01	106-2600-01	Grass Shield	1
6	R104-2628	104-2628	Bolt - Hex Washer M6-1.0 x 12	2

Tech Note: Fits 2003-2011:

6	R323-6	01-150-0010, 01-178-0608, 20-47-AD, 20-47-AGD, 3224-2, 323-6, 49-3510, 908034P, 908332	Bolt - Hex HD 3/8-16 x 1 GR5 YZ	2
---	---------------	--	------------------------------------	---

Tech Note: Fits 2011 and up:

7	R33114-016	33114-016, 42-9230, 42-9270, 48-7680, 48-7690, 48-7700	Bolt - Hx HD 8mm x 1.25 x 15	2
---	-------------------	---	------------------------------	---

All original equipment manufacturers names and part numbers are used for identification purposes only, and we are in no way implying that our products are original equipment parts. Prices subject to change without notice.



Replaces Toro Greensmaster 3250-D Parts

DPA Cutting Unit - Models 04610, 04611 & 04616
Reel & Bedknife



Item No	R&R Part No.	OEM Part No.	Description	Qty Req	Order Quantity
8	R453009	01-166-0400, 24-10-BD, 24-9-AD, 32-9650, 3256-2, 3256-23, 3256-3, 3256-67, 3290-217, 3556-3, 4-2390, 7-0152	Washer - Flat 5/16 SAE	2	
9	R33024-00	33024-00	Locknut - 8mm x 1.25	4	
10	R65-6270	119-4050, 65-6270	Bolt - Bed Bar	2	
<i>Tech Note: Fits up to 2010:</i>					
11	R32128-48	32128-48	Locknut - 7/16-20 Flanged	2	
<i>Tech Note: Fits up to 2010:</i>					
12	R52-2860	119-4150, 52-2860	Washer - Bed Bar Pivot	4	
13	R52-2900	52-2900	Washer - Nylon	4	
14	R63-9510	63-9480, 63-9510	Bushing - Rubber For Bed Bar	2	
15	R52-2890	52-2890	Bushing - Flanged	2	
16	R106-2648-01	106-2648-01	Bed Bar	1	
16	R150176		Bed Bar - Fits R&R Units Only	1	
16	R99-3794-01	99-3794-01, 99-3794-03	Bed Bar - Aggressive	1	
17	R150476	3-3816, 3-6462, 57-4910	Screw - Bedknife 5/16-18 x 5/8	13	

All original equipment manufacturers names and part numbers are used for identification purposes only, and we are in no way implying that our products are original equipment parts. Prices subject to change without notice.



Replaces Toro Greensmaster 3250-D Parts

DPA Cutting Unit - Models 04610, 04611 & 04616
Reel & Bedknife



Item No	R&R Part No.	OEM Part No.	Description	Qty Req	Order Quantity
18	R33025-00	32025-00, 33025-00	Locknut - 10mm x 1.5 Jam	2	
19	R99-3755	99-3755	Spring - Bed Bar Adjusting	2	
20	R99-2098	99-2098	Washer - Bed Bar Adjuster	2	
21	R99-2096	99-2096	Screw - Bed Bar Adjustment - M10 Thrd 1 End	2	
22	R106-5335	106-5335	Wave Washer - Reel Adjusting	2	
23	R106-5344	106-5344	Bushing - Flanged and Keyed	4	
24	R106-2619	106-2619	Seal - Strip	1	
25	R105-5774	105-5774	Bolt - Shoulder	4	
26	R98-0668	98-0668	Nut - Whiz Lock	4	
27	R119-9303	105-5799, 119-9303	Frame - Crossmember	1	
28	R99-2097	99-2097	Detent - Bed Bar Adjuster	2	
29	R3255-8	3255-8	Washer - Lock 5/16 Ext	2	
30	R33114-010	33114-010	Bolt - Hex HD M8-1.25 x 10	2	
<i>Tech Note: Fits 2003-2010:</i>					
30	R151379	33114-060, 42-9510	Bolt - Hx HD 8-1.25 x 65mm	2	
<i>Tech Note: Fits 2003-2010:</i>					
30	R322-26	322-26	Bolt - Hx HD 5/16-18 x 3/8	4	
<i>Tech Note: Fits 2011 and up:</i>					
31	R106-6921	106-5334, 106-6921, 114-4634	Shaft - Bed Bar Adjustment Assy	2	

All original equipment manufacturers names and part numbers are used for identification purposes only, and we are in no way implying that our products are original equipment parts. Prices subject to change without notice.



Replaces Toro Greensmaster 3250-D Parts

DPA Cutting Unit - Models 04610, 04611 & 04616
Reel & Bedknife



Item No	R&R Part No.	OEM Part No.	Description	Qty Req	Order Quantity
<i>Tech Note: Fits 2003:</i>					
31	R106-5363	106-5363	Shaft - Adjusting - Bed Bar - Stainless	2	
<i>Tech Note: Fits 2004 and up:</i>					
32	R106-6924-03	106-2617-03, 106-6924-03	Cut-Off Bar	1	
33	R110-3986	110-3986, 48-8870, 56-6380	Screw - M6 x 1.0 x 20mm	4	
34	R33003-00	33003-00, 65-7980	Hex Nut - Flanged 6-1.0mm	4	
35	R105-5711	105-5711, 119-4165	Shim - Roller	2	
36	R105-5710	105-5710, 119-4166	Spacer - Roller	2	
37	R105-5712	105-5712, 119-4157	Retainer - Roller	2	
38	R106-2603	106-2603	Bolt - Shoulder M6-1.0 x 45	4	
39	R106-2635	106-2635	Screw - HOC 2-7/16	2	
39	R110-7352	110-7352	Screw - HOC 2 5/8 Stainless	2	
40	R106-4668	106-4668	Locknut - 10mm x 1.5 Top Lock	2	
41	R104-2603	104-2603, 119-4158	Washer - HOC Bracket	2	
42	R150647	105-5342	Plow Bolt - HOC - Front Roller	2	
43	R48-7610	33113-012, 48-7610	Bolt - Hex HD Nyloc M6 x 12	2	
44	R99-3781	99-3781	Bracket - Front Roller 5 Oal	2	

All original equipment manufacturers names and part numbers are used for identification purposes only, and we are in no way implying that our products are original equipment parts. Prices subject to change without notice.



Replaces Toro Greensmaster 3250-D Parts

DPA Cutting Unit - Models 04610, 04611 & 04616
Reel & Bedknife



Item No	R&R Part No.	OEM Part No.	Description	Qty Req	Order Quantity
<i>Tech Note: Fits 2003:</i>					
44	R107-3502	107-3502	Bracket - Front Roller 5-1/4 Oal	2	
<i>Tech Note: Fits 2004-2006:</i>					
44	R110-7351	110-7351	Bracket - High HOC - 5 1/4	2	
<i>Tech Note: Fits 2006 and up:</i>					
44	R106-4699	106-4699	Bracket Kit - High Height of Cut (Set/2)	1	
<i>Tech Note: Set of 2:</i>					
45	R106-6929	106-6929	V-Ring - Reel	2	
46	R93-2489	93-2489	Bearing - Reel	2	
47	R106-2607	106-2607	O-Ring - Reel	1	
48	R106-6926	106-6926	Inner Seal - Reel	2	
49	R94-4507	94-4507	Coupling - Reel	1	
50	R106-6927	106-6927	Speedi-Sleeve - Reel	2	
51	R105-5700	105-5700, 115-5258	Wave Washer - Bearing	1	
52	R150485	2410-30	Cap - Protective Bearing Housing	1	
53	R94-3559	94-3559	Screw - Hex Socket Head	2	
54	R104-9447	104-9447	Adapter - Motor	1	
56	R105-5706	105-5706	Locknut - Reel	2	
57	R253-134	253-134	Outer Seal	2	
58	R105-5797	105-5797	Side Plate - RH - Fits OEM Units Only	1	

All original equipment manufacturers names and part numbers are used for identification purposes only, and we are in no way implying that our products are original equipment parts. Prices subject to change without notice.



Replaces Toro Greensmaster 3250-D Parts

*DPA Cutting Unit - Models 04610, 04611 & 04616
Reel & Bedknife*



Item No	R&R Part No.	OEM Part No.	Description	Qty Req	Order Quantity
58	R105-5797G		Side Plate - RH - Fits R&R Units Only	1	
59	R105-5795	105-5795	Side Plate - LH - Fits OEM Units Only	1	
59	R105-5795G		Side Plate - LH - Fits R&R Units Only	1	
60	R106-6914	106-6914, SG427541	Snap Ring - Internal	1	
61	R105-5709	105-5709	Weight	1	
62	R33114-040	33114-040, 42-9530	Screw - Hh M8-1.25 x 40 CL8.8	2	
63	R105-5708	105-5708, 121-4609	Plug - Expansion	1	
64	R106-5336	106-5336	Nut - 5/8-18 Jam Bed Bar Adj	2	
66	R94-2958	94-2958	Stud - Alloy Ball Joint	2	
67	R3254-6	01-166-0010, 01-166-0280, 01-166-0610, 3253-5, 3254-18, 3254-6, 3290-223, 48-9370	Washer - Lock 3/8	2	
68	R105-5775	105-5775	Retaining Ring - Reel Coupling	1	
69	R106-2633	106-2633	Bolt - Hex Washer M10-1.5 x 16	2	
70	R32120-93	32120-93	Snap Ring - HD	2	
72	R105-5740	105-5740	Hook - Lift	1	
73	R33115-025	33115-025, 48-7780	Bolt - Hex HD M10-1.5 x 25	2	

All original equipment manufacturers names and part numbers are used for identification purposes only, and we are in no way implying that our products are original equipment parts. Prices subject to change without notice.



Replaces Toro Greensmaster 3250-D Parts

DPA Cutting Unit - Models 04610, 04611 & 04616
Reel & Bedknife



Item No	R&R Part No.	OEM Part No.	Description	Qty Req	Order Quantity
74	R3296-28	119-4154, 140-9234, 32127-34, 32128-7, 32128-8, 32136-7, 3296-28	Nut - 1/2-20 ESNA Jam	2	
<i>Tech Note: Fits 2010-2011:</i>					
75	R117-9493	117-9493	Bolt - Bed Bar - Hardened	2	
<i>Tech Note: Fits 2010-2011:</i>					
76	R119-3577-01	119-3577-01	Shield-Grass	1	
77	R104-0532	104-0532	Washer - Pulley	1	
<i>Tech Note: Used as a roller installation tool:</i>					
78	R3290-55	3290-55	Rivet - 5/32 x 3/8 Pop Rivet	2	

All original equipment manufacturers names and part numbers are used for identification purposes only, and we are in no way implying that our products are original equipment parts. Prices subject to change without notice.