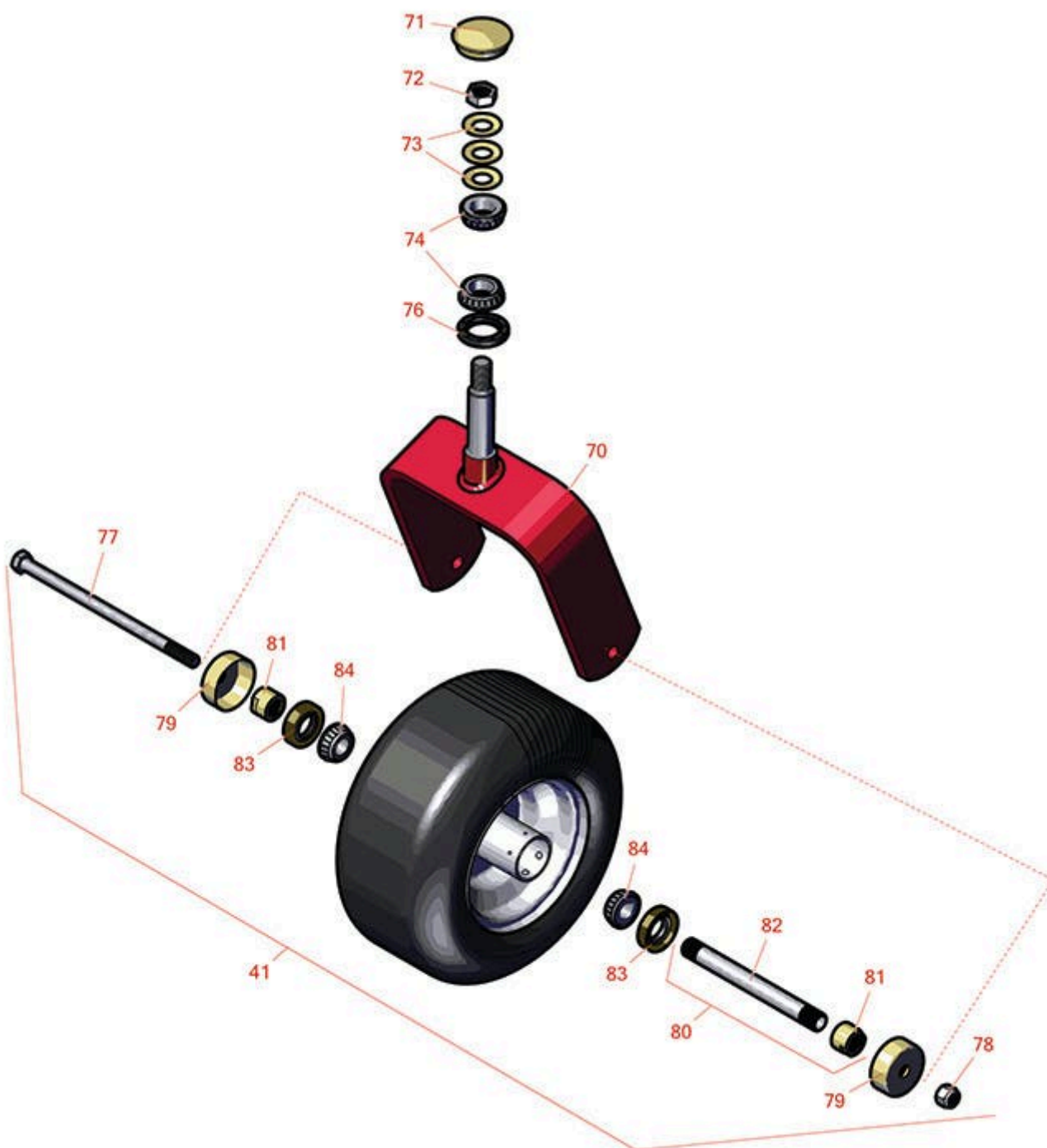




Replaces Toro Z Master Professional 6000 Parts

Zero Turn Mower with 60in Deck - Model 74939
Caster Wheel



All original equipment manufacturers names and part numbers are used for identification purposes only, and we are in no way implying that our products are original equipment parts. Prices subject to change without notice.



Replaces Toro Z Master Professional 6000 Parts

Zero Turn Mower with 60in Deck - Model 74939
Caster Wheel



Item No	R&R Part No.	OEM Part No.	Description	Qty Req	Order Quantity
---------	--------------	--------------	-------------	---------	----------------

Tires & Wheels

0	TIRES		Click Here to View Complete Tire Selection	0	
41	R127-9528	127-9528	Tire & Wheel - 13x6.50-6 Smooth Semi Pneumatic	2	
41	R109-9127	109-9124, 109-9125, 109-9127	Tire & Wheel - 13x6.50-6 Flat Free	2	

Other Parts Available

70	R116-8888	103-1474-01, 116-6707-01, 116-8888	Fork - Caster 7.875 in Inside	2	
71	R103-4882	103-4882	Grease Cap - Castor	2	
72	R3296-51	3296-51, 3296-81	Nut - Nylon Lock 3/4-10 Gr 8	2	
73	R1-633508	1-633508	Washer - Spring Disc	6	
74	R254-94	1-543509, 254-94, 32-8090, 32-8240, 32-9640, 40440, 62-3330	Tapered Bearing Cone	4	
76	R116-5647	116-5647	Seal - Grease	2	
77	R325-39	325-39	Bolt - Hx HD 1/2-13 x 9 1/2	2	
78	RF5003	32127-29, 32131-5, 32132-5, 3296-23	Locknut - ESNA 1/2-13	2	
79	R103-2768	103-2768	Guard - Seal	4	
80	R126-5361	126-5361	Axle Assy - with Bushing - Caster	2	

All original equipment manufacturers names and part numbers are used for identification purposes only, and we are in no way implying that our products are original equipment parts. Prices subject to change without notice.



Replaces Toro Z Master Professional 6000 Parts

*Zero Turn Mower with 60in Deck - Model 74939
Caster Wheel*



Item No	R&R Part No.	OEM Part No.	Description	Qty Req	Order Quantity
81	R103-3051	103-3051	Spacer - Nut - Hardened	4	
82	R103-5156	103-5156	Axle- Caster	2	
83	R103-0063	103-0063	Seal - Grease	4	
84	R254-78	01-102-0060, 01-102-0130, 1-633585, 254-78, 32-7790, 32-9580, 93-4813	Tapered Bearing Cone	4	

All original equipment manufacturers names and part numbers are used for identification purposes only, and we are in no way implying that our products are original equipment parts. Prices subject to change without notice.