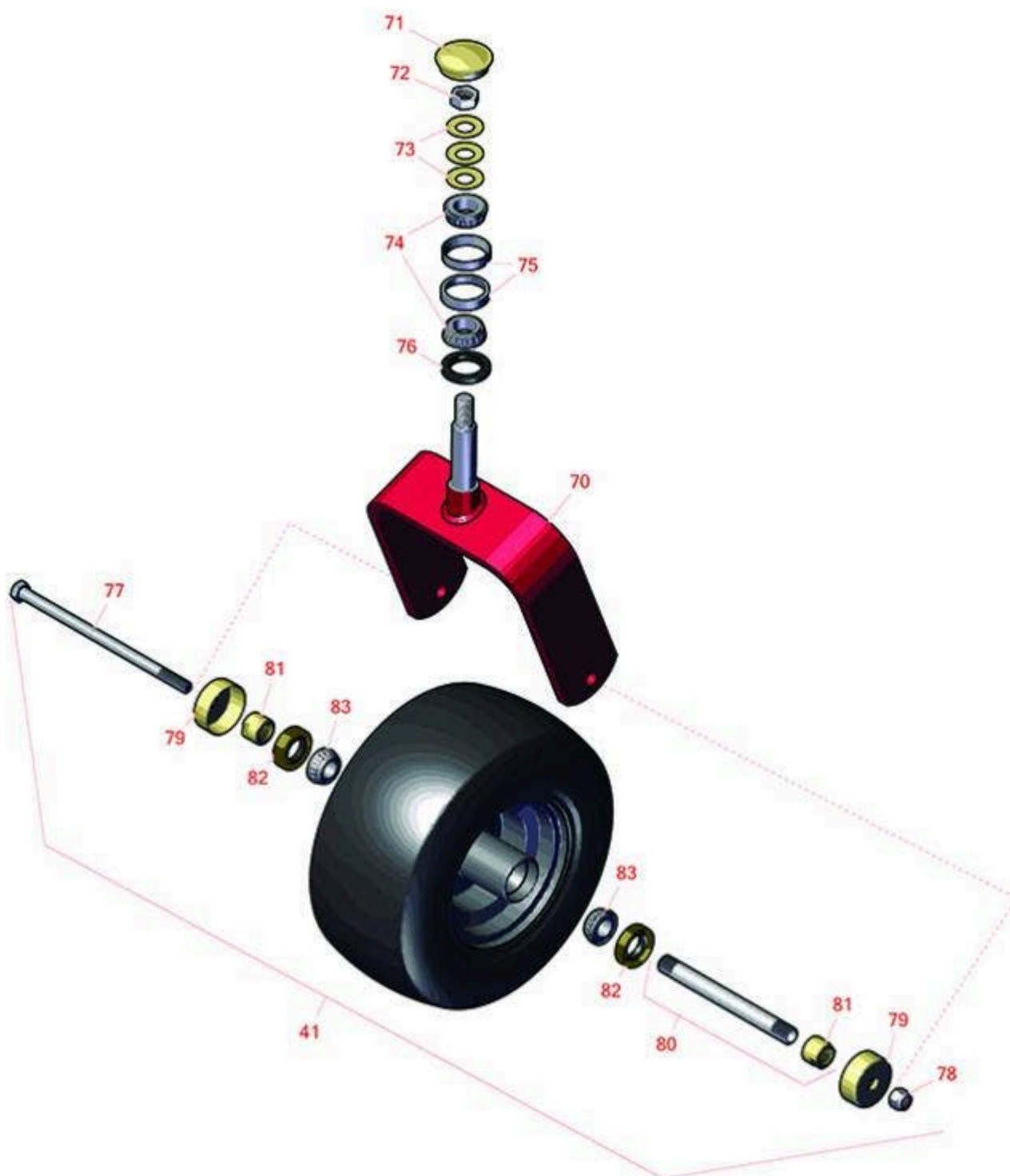




Replaces Toro Z Master Professional 6000 Parts

Zero Turn Mower with 72in Deck - Model 72947
Caster Wheel



All original equipment manufacturers names and part numbers are used for identification purposes only, and we are in no way implying that our products are original equipment parts. Prices subject to change without notice.



Replaces Toro Z Master Professional 6000 Parts

Zero Turn Mower with 72in Deck - Model 72947
Caster Wheel



| Item No | R&R Part No. | OEM Part No. | Description | Qty Req | Order Quantity |
|---------|--------------|--------------|-------------|---------|----------------|
|---------|--------------|--------------|-------------|---------|----------------|

Tires & Wheels

| | | | | | |
|----|------------------|----------|--|---|--|
| 0 | TIRES | | Click Here to View Complete Tire Selection | 0 | |
| 41 | R127-9528 | 127-9528 | Tire & Wheel - 13x6:50-6 Smooth Semi Pneumatic | 2 | |

Other Parts Available

| | | | | | |
|----|------------------|--|-------------------------------|---|--|
| 70 | R116-8888 | 103-1474-01, 116-6707-01, 116-8888 | Fork - Caster 7.875 in Inside | 2 | |
| 71 | R103-4882 | 103-4882 | Grease Cap - Castor | 2 | |
| 72 | R3296-51 | 3296-51, 3296-81 | Nut - Nylon Lock 3/4-10 Gr 8 | 2 | |
| 73 | R1-633508 | 1-633508 | Washer - Spring Disc | 6 | |
| 74 | R254-94 | 1-543509, 254-94, 32-8090, 32-8240, 32-9640, 40440, 62-3330 | Tapered Bearing Cone | 4 | |
| 75 | R254-72 | 01-103-0050, 01-103-0120, 01-103-0140, 1-543508, 254-71, 254-72, 40439, 62-3340, 99-4511 | Cup - Bearing | 4 | |
| 76 | R116-5647 | 116-5647 | Seal - Grease | 2 | |
| 77 | R325-39 | 325-39 | Bolt - Hx HD 1/2-13 x 9 1/2 | 2 | |
| 78 | RF5003 | 32127-29, 32131-5, 32132-5, 3296-23 | Locknut - ESNA 1/2-13 | 2 | |

All original equipment manufacturers names and part numbers are used for identification purposes only, and we are in no way implying that our products are original equipment parts. Prices subject to change without notice.



Replaces Toro Z Master Professional 6000 Parts

*Zero Turn Mower with 72in Deck - Model 72947
Caster Wheel*



| Item No | R&R Part No. | OEM Part No. | Description | Qty Req | Order Quantity |
|---------|------------------|---|-----------------------------------|---------|----------------|
| 79 | R103-2768 | 103-2768 | Guard - Seal | 4 | |
| 80 | R126-5361 | 126-5361 | Axle Assy - with Bushing - Caster | 2 | |
| 81 | R103-3051 | 103-3051 | Spacer - Nut - Hardened | 4 | |
| 82 | R103-0063 | 103-0063 | Seal - Grease | 4 | |
| 83 | R254-78 | 01-102-0060, 01-102-0130, 1-633585, 254-78, 32-7790, 32-9580, 93-4813 | Tapered Bearing Cone | 4 | |

All original equipment manufacturers names and part numbers are used for identification purposes only, and we are in no way implying that our products are original equipment parts. Prices subject to change without notice.