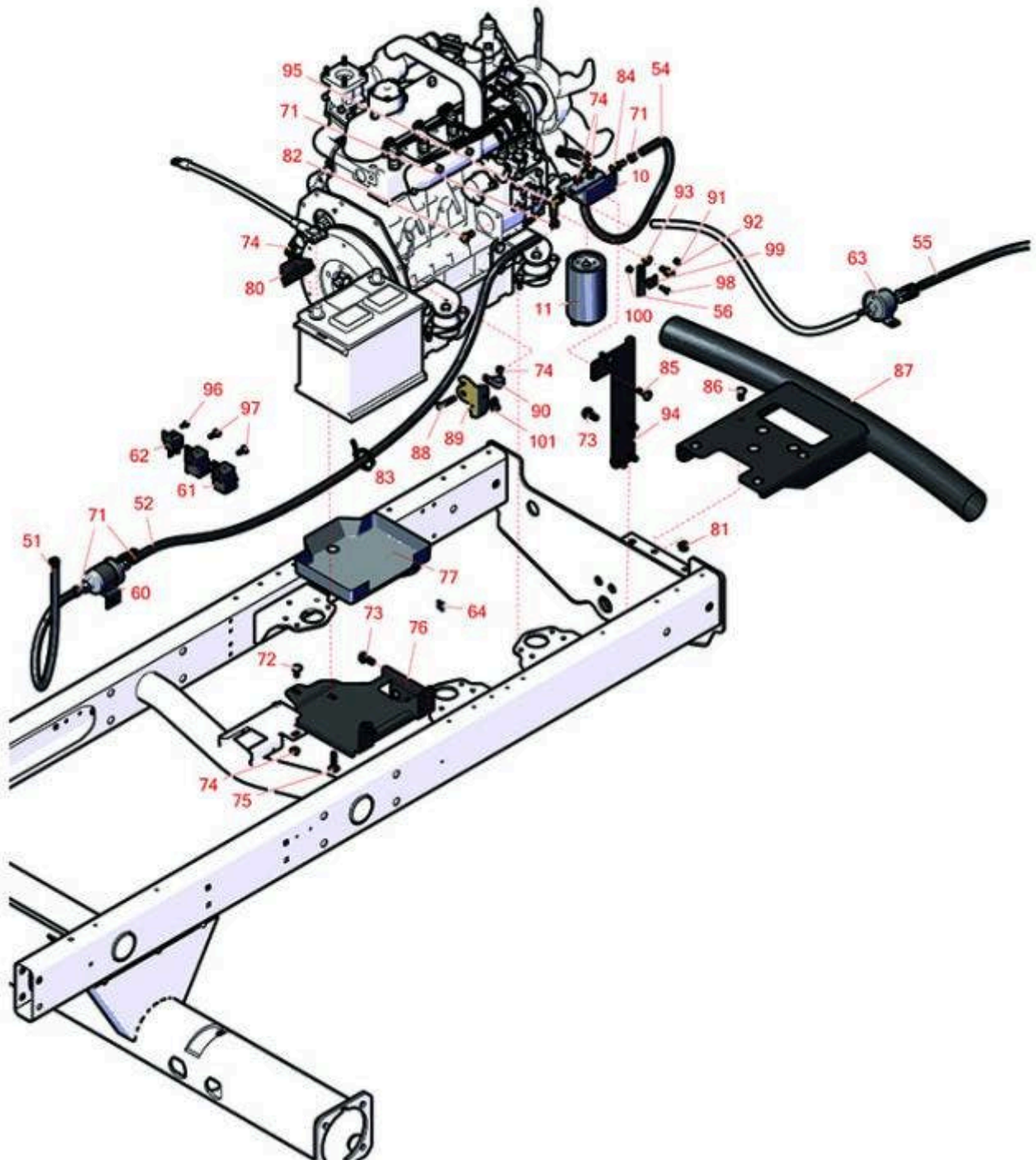




Replaces Toro Reelmaster 5610-D Parts

Battery & Bumper



All original equipment manufacturers names and part numbers are used for identification purposes only, and we are in no way implying that our products are original equipment parts. Prices subject to change without notice.



Replaces Toro Reelmaster 5610-D Parts

Battery & Bumper



Item No	R&R Part No.	OEM Part No.	Description	Qty Req	Order Quantity
Filters					
10	R110-9044	110-9044, 125-2914	Donaldson Water/Fuel Separator Assy	1	
11	R110-9049	110-9049	Donaldson Fuel Filter - Spin On	1	
11	RRF10515	105-8045, 108-3854, 110-9049	SilverGuard Fuel Filter	1	
11	R125-8752	125-8752	Filter - Fuel/Oil Donaldson	1	
11	RRF10536	125-2915	SilverGuard Filter - Fuel/Water	1	
Hoses					
51	R110-3257	110-3257, 63-7630	Hose-Fuel	1	
52	R110-3259	110-3259	Hose-Fuel	1	
54	R109-0309	109-0309	Hose-Fuel	1	
55	R109-0308	109-0308	Fuel Hose	1	
56	R117-0298	117-0298, 125-8808	Hose-Fuel	1	
Electrical, Gauges and Controls					
60	R110-8806	110-8806	Fuel Pump and Filter Assy	1	
61	R99-7430	99-7430	Relay - 30 Amp	2	
62	R99-7435	99-7435	Relay - 70 Amp	1	
63	R121-5613	121-5613, 127-3008, 145-3160	Fuel Pump - Electric	1	
64	R94-6710	94-6710	Fuse-Blade, 2 Amp	1	

Other Parts Available

All original equipment manufacturers names and part numbers are used for identification purposes only, and we are in no way implying that our products are original equipment parts. Prices subject to change without notice.



Replaces Toro Reelmaster 5610-D Parts

Battery & Bumper



Item No	R&R Part No.	OEM Part No.	Description	Qty Req	Order Quantity
71	R92-2379	92-2379	Clamp - Hose	6	
72	R3230-1	01-173-0506, 3230-1, 3230-20, 900037P	Bolt - Carriage 5/16-18 x 3/4	1	
73	R32144-14	32104-32, 32104-49, 32144-14	Bolt - Hex Washer 5/16-18 x 5/8	2	
74	R104-8300	104-8300, 104-8300 , 119-4041	Locknut - 5/16-18 Flanged Y/Zinc	4	
75	R3230-6	3230-6	Bolt - Carriage	2	
76	R110-0907B	110-0907-01	Bracket - Battery - Black	1	
77	R99-3513	99-3513	Tray - Battery	1	
80	R66-2490	66-2490	Retainer - Battery	1	
81	R104-8301	104-8301, 104-9301, 109-6658, 133-7570	Locknut - 3/8-16 Nylon Flanged	4	
82	R63-7790	42-9300, 63-7790	Bolt - Hex HD M10x1.25x20mm	1	
83	R3290-378	30-1740, 3290-378, 52-6570, 60-4340	Cable Tie	5	
84	R353-783	353-783	Fitting - Straight	2	
<i>Tech Note: Models 03677 / 03677N / 03678 Only:</i>					
85	R3230-22	3230-22, R3230-22	Bolt - Carriage 5/16-18 x 1	2	
86	R3231-21	3231-21	Screw - 3/8-16 x 3/4 Carriage	4	

All original equipment manufacturers names and part numbers are used for identification purposes only, and we are in no way implying that our products are original equipment parts. Prices subject to change without notice.



Replaces Toro Reelmaster 5610-D Parts

Battery & Bumper



Item No	R&R Part No.	OEM Part No.	Description	Qty Req	Order Quantity
87	R110-8951-03	110-8951-03	Bumper Assy	1	
88	R322-5	01-178-0508, 20-26-AD, 20-26-AGD, 30-9000, 322-5, 513341, 519755, 908019P, N/A	Bolt - Hex HD 5/16-18 x 1	1	
89	R110-9007-03	110-9007-03	Support-Cable, Thr	1	
90	R2412-41	2412-41	Clamp	1	
91	R112-9919	112-9919	Stop - Throttle Cable	1	
92	R98-9311	98-9311	Swivel-Throttle	1	
93	R3296-20	3296-20	Locknut - 5/16-24 Flanged Ny	1	
94	R110-8968-01	110-8968-01	Mount - Water Separator	1	
95	R353-781	353-781	Fitting-Elbow	2	
<i>Tech Note: Model 03679 Only:</i>					
96	R3290-321	01-158-0200, 31-0130, 3250-12, 3290-321	Screw-Hex Washer HD 10-24 x 1/2	1	
97	R3234-33	3234-33	Bolt - 1/4-20 x 3/4 Serr Hex Flanged	2	
98	R32105-13	32105-13	Screw - Hx Was HD 10-32 x 3/4	1	
99	R81-1690	81-1690	Clamp - Cable	1	
100	R3296-2	32127-10, 3296-2, 9157404	Nut - #10 Lock	1	
101	R2412-149	2412-149	Clamp-Hose	2	

All original equipment manufacturers names and part numbers are used for identification purposes only, and we are in no way implying that our products are original equipment parts. Prices subject to change without notice.



Replaces Toro Reelmaster 5610-D Parts

Battery & Bumper



All original equipment manufacturers names and part numbers are used for identification purposes only, and we are in no way implying that our products are original equipment parts. Prices subject to change without notice.