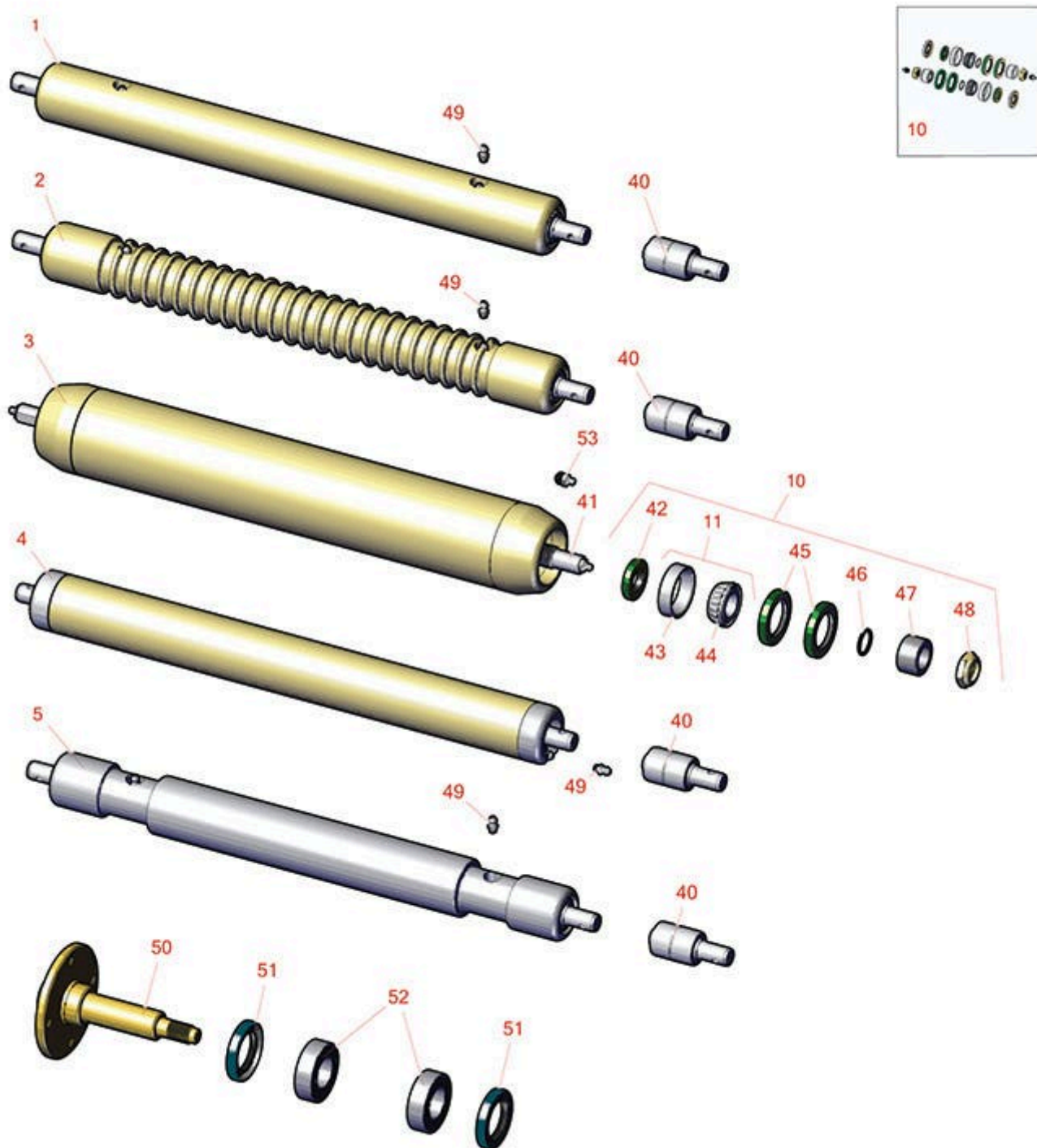




# Replaces John Deere 185 E-Cut Hybrid Walk-Behind Greens Mower Parts

Cutting Unit  
Rollers



All original equipment manufacturers names and part numbers are used for identification purposes only, and we are in no way implying that our products are original equipment parts. Prices subject to change without notice.



# Replaces John Deere 185 E-Cut Hybrid Walk-Behind Greens Mower Parts

Cutting Unit  
Rollers



Item No	R&R Part No.	OEM Part No.	Description	Qty Req	Order Quantity
---------	--------------	--------------	-------------	---------	----------------

## Rollers

1	<b>RAMT2786</b>	AMT2786, AMT2981, BM20561	Roller - Smooth Solid Steel	1	
---	-----------------	---------------------------------	-----------------------------	---	--

*Detail Description: Machined from solid steel, this heavy weight roller uses greasable "water-pump" style bearings.:*

2	<b>RAMT2784</b>	AMT2784, AMT2979, BM20562	Roller - Grooved Machined Solid Steel	1	
---	-----------------	---------------------------------	---------------------------------------	---	--

*Detail Description: Machined from solid steel, this heavy weight roller uses greasable "water-pump" style bearings.:*

3	<b>RTCA19509</b>	TCA19509	Roller - Smooth Tubular Steel	1	
---	------------------	----------	-------------------------------	---	--

*Detail Description: Constructed with a through shaft, this heavy duty roller uses greasable tapered bearings for extended life.:*

4	<b>RTCA19656</b>	BM24203, BM24204, TCA19656	Roller - Smooth Tubular Steel	1	
---	------------------	----------------------------------	-------------------------------	---	--

5	<b>RBUC10787</b>	BUC10787	Roller - 2 in Solid	1	
---	------------------	----------	---------------------	---	--

## Overhaul Kits

10	<b>RAET10632</b>	AET10632	Overhaul Kit - Roller	1	
----	------------------	----------	-----------------------	---	--

*Detail Description: Includes 4 ea: RET15755 Seal; 2 ea: R237-54 O-Ring, R253-122 Seal, R254-78 Bearing, R254-79 Cup, R3296-15 Locknut, R471219 Grease Zerk, RET15726 Sleeve, RET15756 Seal:*

11	<b>R500534</b>		Bearing - with Cup	2	
----	----------------	--	--------------------	---	--

*Detail Description: Kit includes: 1 ea R254-78- Bearing Cone & R254-79 Bearing Cone:*

## Other Parts Available

40	<b>RAA35741</b>	AA35741, AET10129, TCA22836	Bearing	2	
----	-----------------	-----------------------------------	---------	---	--

All original equipment manufacturers names and part numbers are used for identification purposes only, and we are in no way implying that our products are original equipment parts. Prices subject to change without notice.



# Replaces John Deere 185 E-Cut Hybrid Walk-Behind Greens Mower Parts

Cutting Unit  
Rollers



Item No	R&R Part No.	OEM Part No.	Description	Qty Req	Order Quantity
<i>Detail Description: 1/4" Side Hole:</i>					
41	<b>RTC26890</b>	TCU26890	Shaft - Roller	1	
42	<b>RET15756</b>	ET15756, MT1739, MT739	Seal	2	
43	<b>R254-79</b>	JD8226	Cup - Bearing	2	
<i>Detail Description: Use R254-79M installation mandrel to properly install race.:</i>					
44	<b>R254-78</b>	JD8188	Tapered Bearing Cone	2	
45	<b>RET15755</b>	ET15755	Seal - Oil	4	
46	<b>R237-54</b>	U46731, U6731	O-Ring - Small	2	
47	<b>RET15726</b>	ET15726, RET15726	Sleeve - Wear Hardened	2	
48	<b>R3296-15</b>	N101345	Locknut - 3/4-16 Nylon Jam	2	
49	<b>R302-5</b>	JD7797, JD7842, JD7844	Fitting - Grease	2	
50	<b>RET11081</b>	ET11081	Spindle - Traction Roller	1	
51	<b>RET10285</b>	ET10285	Seal	2	
52	<b>R345050</b>	AZ20217	Bearing	2	
53	<b>R471219</b>	471219, 471231, JD7759, JD7798	Zerk - Grease	2	

All original equipment manufacturers names and part numbers are used for identification purposes only, and we are in no way implying that our products are original equipment parts. Prices subject to change without notice.