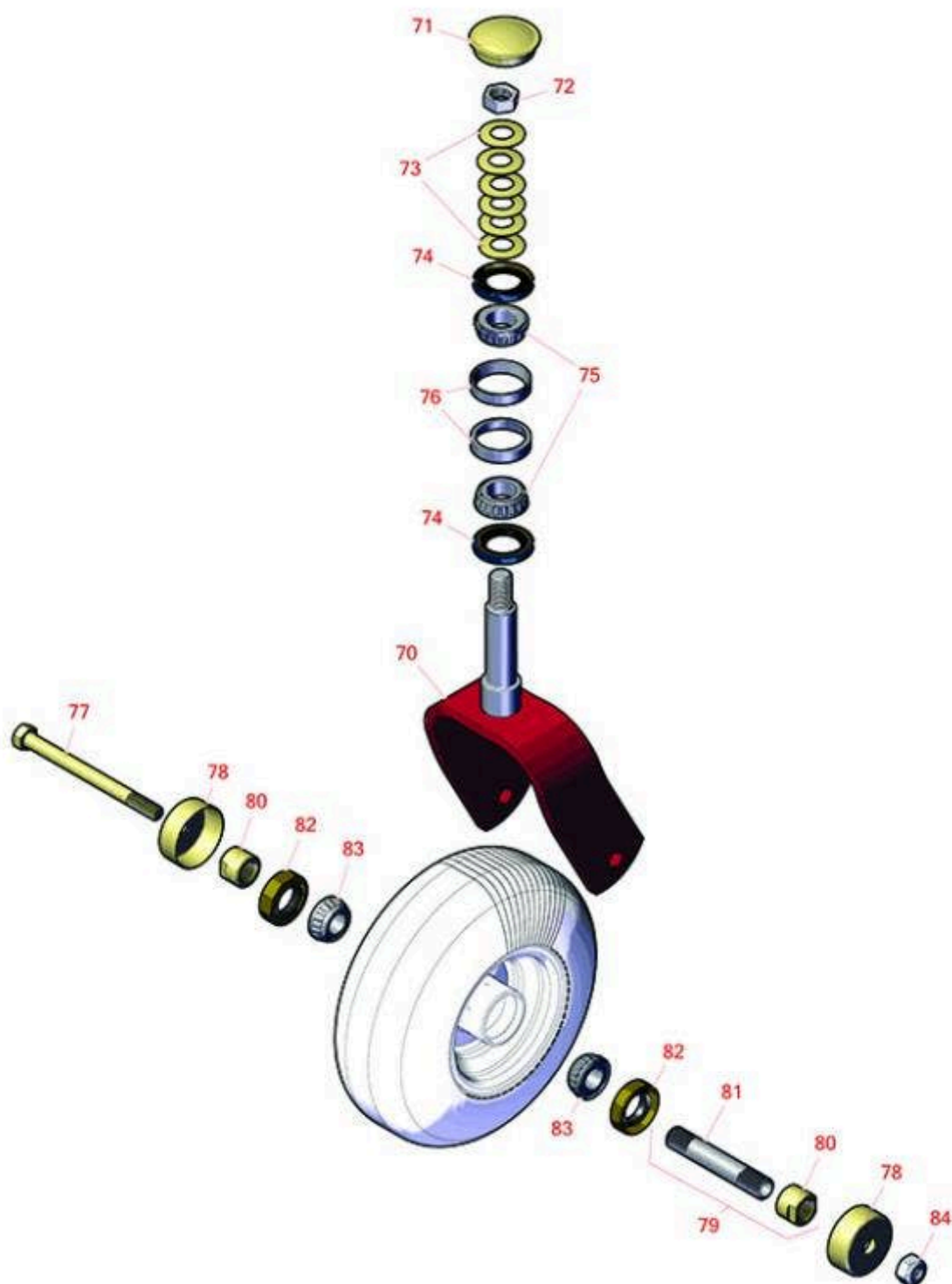




Replaces Toro GrandStand Mower Parts

Mower with 60in Deck - Model 72523

Caster Wheel



All original equipment manufacturers names and part numbers are used for identification purposes only, and we are in no way implying that our products are original equipment parts. Prices subject to change without notice.



Replaces Toro GrandStand Mower Parts

Mower with 60in Deck - Model 72523

Caster Wheel



| Item No | R&R Part No. | OEM Part No. | Description | Qty Req | Order Quantity |
|---------|--------------|--------------|-------------|---------|----------------|
|---------|--------------|--------------|-------------|---------|----------------|

Other Parts Available

| | | | | | |
|----|---------------------|--|------------------------------|----|--|
| 70 | R121-7988-01 | 121-7988-01 | Fork - Caster | 2 | |
| 71 | R103-4882 | 103-4882 | Grease Cap - Castor | 2 | |
| 72 | R3296-51 | 3296-51, 3296-81 | Nut - Nylon Lock 3/4-10 Gr 8 | 2 | |
| 73 | R1-633508 | 1-633508 | Washer - Spring Disc | 12 | |
| 74 | R116-5647 | 116-5647 | Seal - Grease | 2 | |
| 75 | R254-94 | 1-543509, 254-94, 32-8090, 32-8240, 32-9640, 40440, 62-3330 | Tapered Bearing Cone | 4 | |
| 76 | R254-72 | 01-103-0050, 01-103-0120, 01-103-0140, 1-543508, 254-71, 254-72, 40439, 62-3340, 99-4511 | Cup - Bearing | 4 | |
| 77 | R325-20 | 01-150-1250, 01-178-0848, 325-20 | Bolt - Hx HD 1/2-13 x 6 | 2 | |
| 78 | R103-2768 | 103-2768 | Guard - Seal | 4 | |
| 79 | R126-5359 | 126-5359 | Caster Axle Assy w/Bushing | 2 | |
| 80 | R103-3051 | 103-3051 | Spacer - Nut - Hardened | 4 | |
| 81 | R103-3157 | 103-3157 | Axle - Caster Wheel | 2 | |
| 82 | R103-0063 | 103-0063 | Seal - Grease | 4 | |

All original equipment manufacturers names and part numbers are used for identification purposes only, and we are in no way implying that our products are original equipment parts. Prices subject to change without notice.



Replaces Toro GrandStand Mower Parts

Mower with 60in Deck - Model 72523

Caster Wheel



| Item No | R&R Part No. | OEM Part No. | Description | Qty Req | Order Quantity |
|---------|--------------|---|-----------------------------|---------|----------------|
| 83 | R254-78 | 01-102-0060, 01-102-0130, 1-633585, 254-78, 32-7790, 32-9580, 93-4813 | Tapered Bearing Cone | 4 | |
| 84 | R3296-25 | 30-3380, 32127-21, 32127-31, 3290-160, 3290-33, 3296-13, 3296-25, 3296-45, 329645 | Locknut - 1/2-13 Heavy ESNA | 2 | |

All original equipment manufacturers names and part numbers are used for identification purposes only, and we are in no way implying that our products are original equipment parts. Prices subject to change without notice.