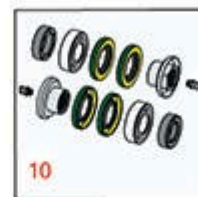
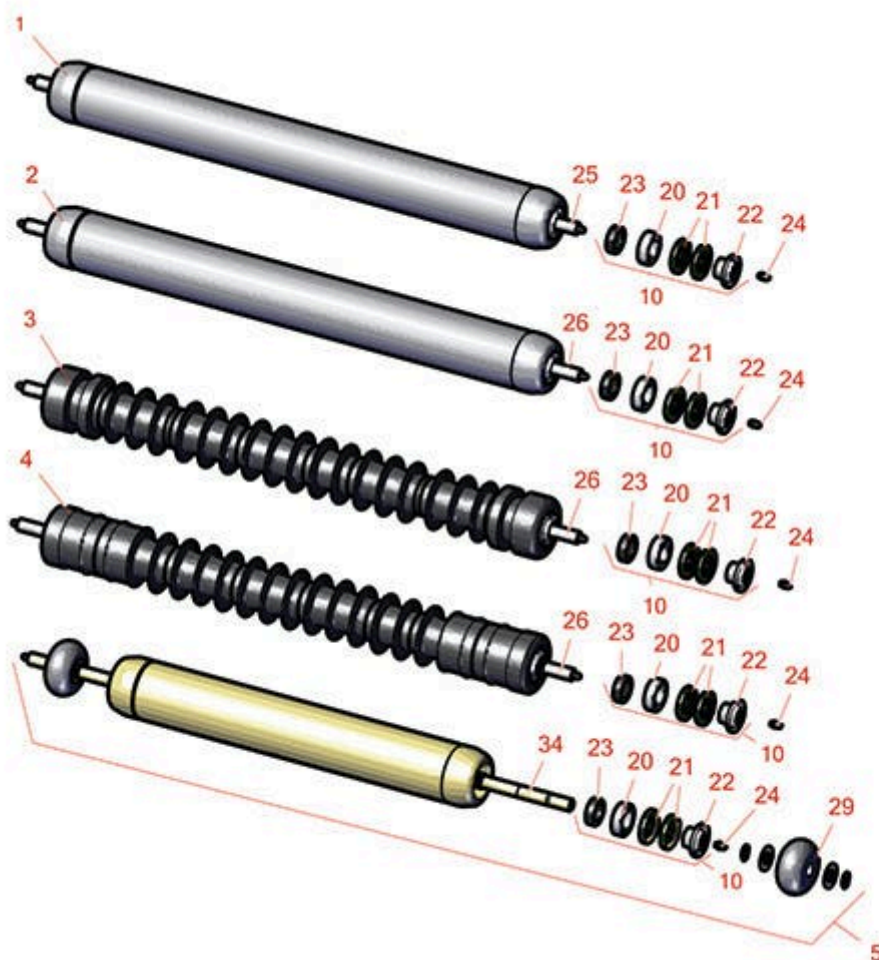




# Replaces Toro Reelmaster 3105-D Parts

27in DPA Cutting Unit - Models 03190 & 03192

Rollers



All original equipment manufacturers names and part numbers are used for identification purposes only, and we are in no way implying that our products are original equipment parts. Prices subject to change without notice.



## Replaces Toro Reelmaster 3105-D Parts

27in DPA Cutting Unit - Models 03190 & 03192  
Rollers



Item No	R&R Part No.	OEM Part No.	Description	Qty Req	Order Quantity
---------	--------------	--------------	-------------	---------	----------------

### R&R Rollers to fit 27" Units

1	<b>R112-8915</b>	112-8915	Roller - Smooth Rear Steel - Long - 27" Units	1
---	------------------	----------	---	---

*Detail Description: Constructed with a through shaft, this heavy-duty roller uses greasable ball bearings.:*

2	<b>R114-9383</b>	114-9383	Roller - Smooth Steel - 27" Units	1
---	------------------	----------	-----------------------------------	---

*Detail Description: Constructed with a through shaft, this heavy-duty roller uses greasable ball bearings.:*

3	<b>R1503990</b>	117-0960	Roller - Fusion Grooved UHMW Polyethylene - 27" Units	1
---	-----------------	----------	---	---

*Detail Description: Fusion Rollers combine the best features of our UHMW plastic rollers with a heavy-duty internal bearing system. Machined from solid UHMW plastic that prevents build-up of debris. This roller has a patented deep groove design and turns on precision stainless ball bearings and double seals for added life.:*

4	<b>R1503995</b>	119-0630	Roller - Fusion Grooved UHMW Polyethylene Shoulder - 27" Units	1
---	-----------------	----------	--	---

*Detail Description: Fusion Rollers combine the best features of our UHMW plastic rollers with a heavy duty internal bearing system. Machined from solid UHMW plastic that prevents build-up of debris. This roller has a patented deep groove design in the center along with shallow grooves on each end to reduce marking in wet conditions and turns on precision stainless ball bearings and double seals for added life.:*

5	<b>R119-4286</b>	119-4286, 137-6118	Roller - Smooth Steel - Short	1
---	------------------	-----------------------	-------------------------------	---

### Overhaul Kits

10	<b>R114-5430</b>	114-5430	Overhaul Kit - Roller	1
----	------------------	----------	-----------------------	---

*Detail Description: Includes 4 ea.: R112-7494 Seals; 2 ea.: R302-5 Grease Zerks, R114-3717 Seals, R112-5290 Bearings & R114-3745 Locknuts:*

### Other Parts Available

All original equipment manufacturers names and part numbers are used for identification purposes only, and we are in no way implying that our products are original equipment parts. Prices subject to change without notice.



## Replaces Toro Reelmaster 3105-D Parts

27in DPA Cutting Unit - Models 03190 & 03192  
Rollers



Item No	R&R Part No.	OEM Part No.	Description	Qty Req	Order Quantity
20	R112-5290	112-5290, 251--346, 251-346, 72-5430	Bearing - Stainless	2	
21	R112-7494	112-7494	Seal	4	
22	R114-3745	106-6939, 108-3151, 114-3745, 114-5411	Locknut - Bearing - Stainless	2	
23	R114-3717	114-3717	Seal	2	
24	R302-5	21-6010, 302-11, 302-37, 302-47, 302-5, 302-57, 302-58, 302-6, 31-0300, 32-9660, 60-0800, 62-3880, 92-4181	Fitting - Grease	2	
25	R112-8918	112-8918	Shaft - Long - Rear Roller - 27" Units	1	
26	R117-0957	117-0957	Shaft - Front Roller - 27" Units	1	
29	R119-4276	119-4276	Roller - Tipper	2	
34	R119-4287	119-4287	Shaft- 27 in Rear Roller	1	

All original equipment manufacturers names and part numbers are used for identification purposes only, and we are in no way implying that our products are original equipment parts. Prices subject to change without notice.