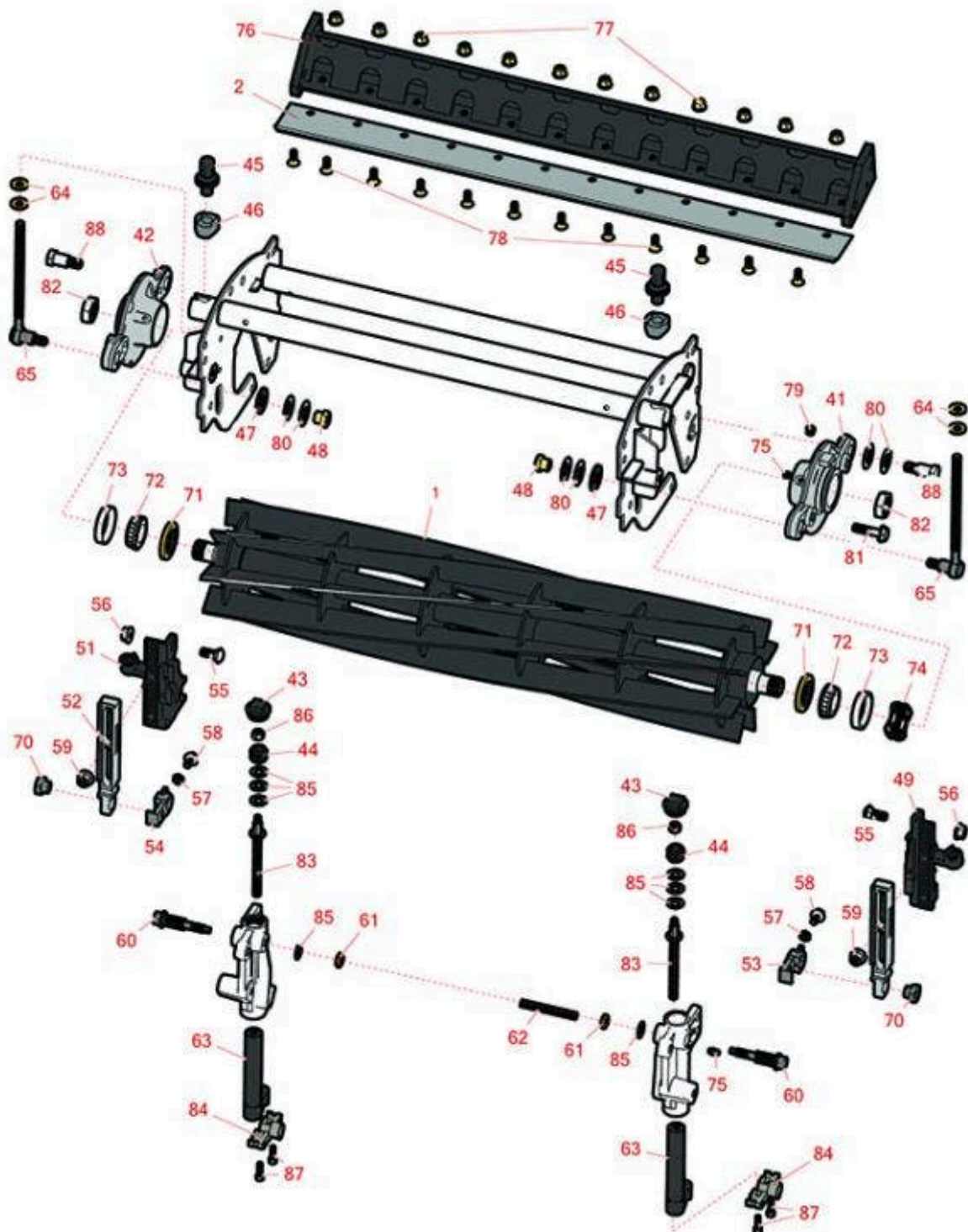




# Replaces John Deere 7200 Reel Mower Parts

30in Cutting Unit  
Reel & Bedknife



All original equipment manufacturers names and part numbers are used for identification purposes only, and we are in no way implying that our products are original equipment parts. Prices subject to change without notice.



# Replaces John Deere 7200 Reel Mower

## Parts

30in Cutting Unit  
Reel & Bedknife



Item No	R&R Part No.	OEM Part No.	Description	Qty Req	Order Quantity
---------	--------------	--------------	-------------	---------	----------------

1	<b>RTCA19357</b>	TCA19357	Reel - 5 Blade 30 in	1	
<i>Detail Description: R&amp;R Reel blades are expertly crafted from premium high carbon-boron alloy steel, heat-treated to perfectly complement both R&amp;R and OEM bedknives. Each reel undergoes precision cylindrical grinding on bearing surfaces, followed by relief grinding for optimal performance. Advanced computer balancing ensures extended reel and bearing life. Backed by our lifetime guarantee against defects in materials and craftsmanship under normal use, R&amp;R Reels deliver unmatched durability and cutting precision you can trust.:</i>					

1	<b>RTCA19358</b>	TCA19358	Reel - 8 Blade 30 in	1	
<i>Detail Description: R&amp;R Reel blades are expertly crafted from premium high carbon-boron alloy steel, heat-treated to perfectly complement both R&amp;R and OEM bedknives. Each reel undergoes precision cylindrical grinding on bearing surfaces, followed by relief grinding for optimal performance. Advanced computer balancing ensures extended reel and bearing life. Backed by our lifetime guarantee against defects in materials and craftsmanship under normal use, R&amp;R Reels deliver unmatched durability and cutting precision you can trust.:</i>					

### R&R Bedknives, Lifetime Guaranteed

2	<b>RMT1973</b>	MT1973	Bedknife - 30 in 12 Hole	1	
<i>Detail Description: R&amp;R Bedknives are manufactured from high carbon-boron alloy steel and then hardened to RC46-49 to match the temper of our reel blades and original equipment reels. Bedknives are surface ground on the top and front edge and straightened three times before being packaged with oil for rust prevention. All R&amp;R Bedknives now have an increased front edge grind for added life. All R&amp;R Bedknives are guaranteed against defects in material and workmanship under normal use for the life of the part.:</i>					

### Other Parts Available

41	<b>RUC13937</b>	UC13937	Housing - w/o Bearing - LH	1	
42	<b>RUC13941</b>	UC13941	Housing - w/o Bearing - RH	1	
43	<b>RUC16102</b>	TCU24949, UC16102	Cap	2	
44	<b>RTC40491</b>	TCU24683, TCU40491	Worm Gear	2	
45	<b>RUC16137</b>	TCU24955, UC16137	Adjuster	2	

All original equipment manufacturers names and part numbers are used for identification purposes only, and we are in no way implying that our products are original equipment parts. Prices subject to change without notice.



# Replaces John Deere 7200 Reel Mower

## Parts

30in Cutting Unit  
Reel & Bedknife



Item No	R&R Part No.	OEM Part No.	Description	Qty Req	Order Quantity
46	RTCU25394	TCU25394, TCU27453	Base	2	
47	RTCU25260	TCU25260	Washer	2	
48	RET16572	ET16572	Nut - Hex	2	
49	RUC16138	UC16138	Bracket - Front LH	1	
51	RUC16139	UC16139	Bracket - Front RH	1	
52	RUC22790	UC22790	Bracket - Front Roller	2	
53	RUC18211	TCU24461, UC18211	Bracket - LH	1	
54	RUC16109	TCU24461, UC16109	Bracket - RH	1	
55	R03M7191	03M7191	Bolt - Carriage M10 x 25	4	
56	RH135891	H135891	Locknut - 10mm x 1.5 Flanged 10.9	4	
<i>Detail Description: High Strength:</i>					
57	R14M7151	14M7151	Nut - Jam Roller Adj	2	
58	R33114-016	19M7162	Bolt - Hx HD 8mm x 1.25 x 15	2	
59	R14M7465	14M7465	Lock Nut - M10-1.50 Fl	4	
60	RTCU26458	TCU26458	Worm Gear	2	
61	R14M7152	14M7152	Nut - 10mm x 1.5 Jam	2	
62	RTCU25398	TCU25398	Compression Spring	2	
63	RAUC13597	AUC13597	Adjuster	2	
64	R24H1682	24H1682	Washer - 13/32 x 7/8 x 1/8	4	
65	RTCU25317	TCU25317	Adjuster	2	

All original equipment manufacturers names and part numbers are used for identification purposes only, and we are in no way implying that our products are original equipment parts. Prices subject to change without notice.



# Replaces John Deere 7200 Reel Mower

## Parts

30in Cutting Unit  
Reel & Bedknife



Item No	R&R Part No.	OEM Part No.	Description	Qty Req	Order Quantity
70	RTCU28635	TCU24555, TCU28635	Eccentric	2	
71	RTCU25266	TCU25266	Seal	2	
72	R254-94	JD8933, TCU37582	Tapered Bearing Cone	2	
73	R254-72	JD8253	Cup - Bearing	2	
74	R170610	TCU26530	Spring - Compression	2	
75	R302-5	JD7797, JD7842, JD7844	Fitting - Grease	1	
76	RAMT1051	AMT1051	Backing Bar - 30 Bedknife	1	
77	R14M7396	14M7396	Locknut - Flanged Nyloc	12	
78	R19M7573	19M7573	Screw - Bedknife M8-1.25 x 20	12	
79	R170714	E14814	Fitting - Pressure Relief	2	
80	RET16678	ET16678	Washer - Spring	8	
81	R19M7804	19M7804	Bolt - Flanged Hex M10-1.5 x 40	2	
82	RTCU26215	TCU26215	Nut - Reel	2	
83	RTCU26123	TCU26123	Adjuster	2	
84	RTCU28987	TCU25228, TCU28987	Half Clamp - Roller Bkt	2	
85	RET16679	ET16679	Washer - Spring	6	
86	RM148268	M148268	Lock Nut	2	
87	R19M8627	19M7603, 19M8627	Screw - M6 x 20	4	
88	RMT6338	MT6338	Bolt - Shoulder	2	

All original equipment manufacturers names and part numbers are used for identification purposes only, and we are in no way implying that our products are original equipment parts. Prices subject to change without notice.