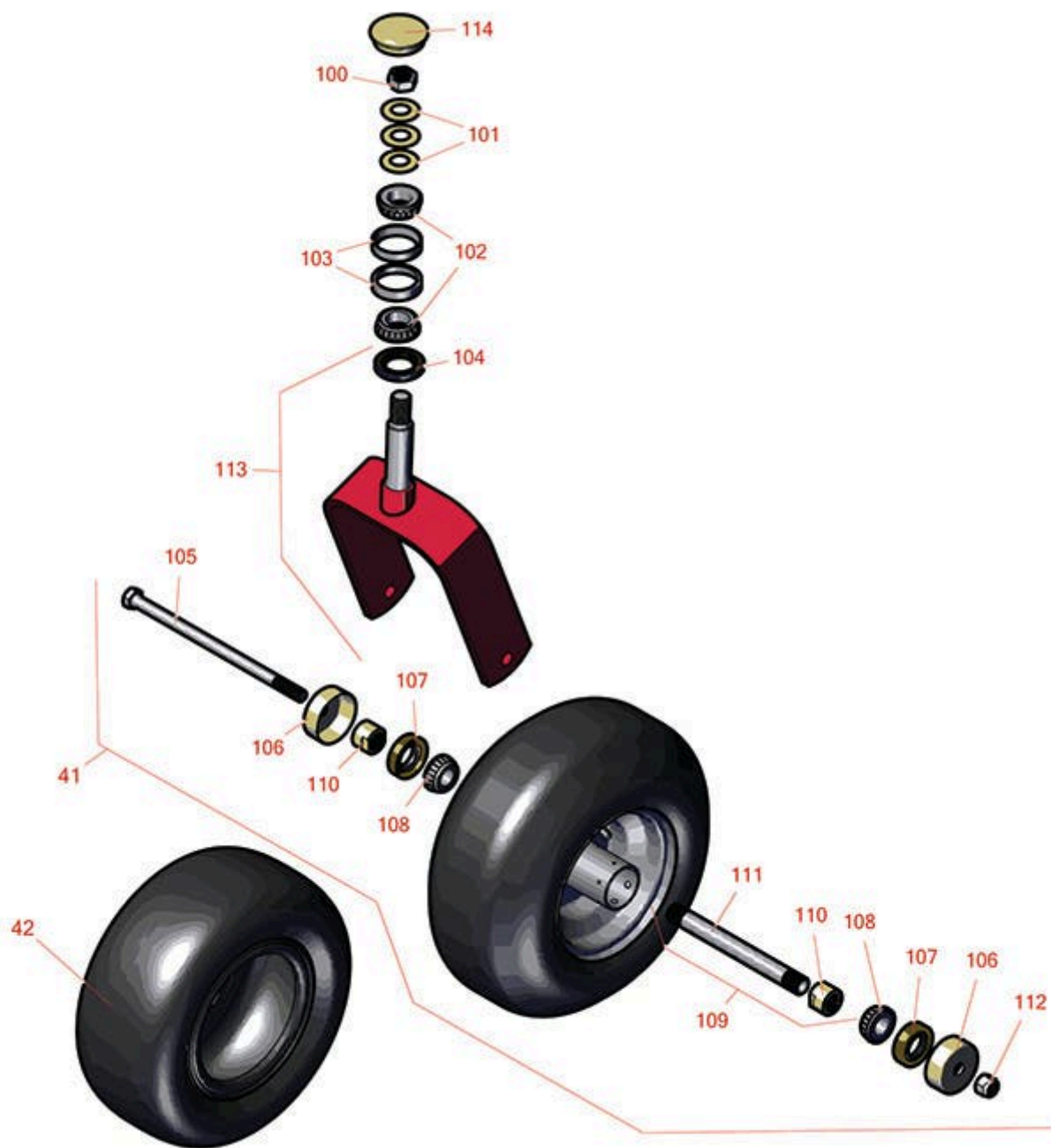




Replaces Toro Z Master 2000 Parts

Zero Turn Mower with 48in Deck - Model 74141

Caster Wheel



All original equipment manufacturers names and part numbers are used for identification purposes only, and we are in no way implying that our products are original equipment parts. Prices subject to change without notice.



Replaces Toro Z Master 2000 Parts

Zero Turn Mower with 48in Deck - Model 74141

Caster Wheel



Item No	R&R Part No.	OEM Part No.	Description	Qty Req	Order Quantity
Wheel					
41	R127-9535	127-9535	Tire & Wheel - 13x5.00-6	2	
42	RCT5120211	1-633002	Tire - 13x5.00-6 Nhs (4 Ply) Carlisle Smooth	2	
Other Parts Available					
100	R3296-51	3296-51, 3296-81	Nut - Nylon Lock 3/4-10 Gr 8	2	
101	R1-633508	1-633508	Washer - Spring Disc	6	
102	R254-94	1-543509, 254-94, 32-8090, 32-8240, 32-9640, 40440, 62-3330	Tapered Bearing Cone	4	
103	R254-72	01-103-0050, 01-103-0120, 01-103-0140, 1-543508, 254-71, 254-72, 40439, 62-3340, 99-4511	Cup - Bearing	4	
104	R116-5647	116-5647	Seal - Grease	4	
105	R325-37	325-36, 325-37	Bolt - Hex Head 1/2-13 x 7 Grade 5	2	
106	R103-2768	103-2768	Guard - Seal	4	
107	R103-0063	103-0063	Seal - Grease	4	
108	R254-78	01-102-0060, 01-102-0130, 1-633585, 254-78, 32-7790, 32-9580, 93-4813	Tapered Bearing Cone	4	

All original equipment manufacturers names and part numbers are used for identification purposes only, and we are in no way implying that our products are original equipment parts. Prices subject to change without notice.



Replaces Toro Z Master 2000 Parts

Zero Turn Mower with 48in Deck - Model 74141

Caster Wheel



Item No	R&R Part No.	OEM Part No.	Description	Qty Req	Order Quantity
109	R126-5360	126-5360	Axle- Caster w/Spacer Nut	2	
110	R103-3051	103-3051	Spacer - Nut - Hardened	4	
111	R103-3155	103-3155	Axle - Caster	2	
112	RF5003	32127-29, 32131-5, 32132-5, 3296-23	Locknut - ESNA 1/2-13	2	
113	R116-6701-01	116-6701-01	Castor Fork - 6.25 in Inside	2	
113	R116-8883	1-632511-01	Caster Fork Assy Incl Seal 6.25 in Inside	2	
114	R103-4882	103-4882	Grease Cap - Castor	2	

All original equipment manufacturers names and part numbers are used for identification purposes only, and we are in no way implying that our products are original equipment parts. Prices subject to change without notice.