

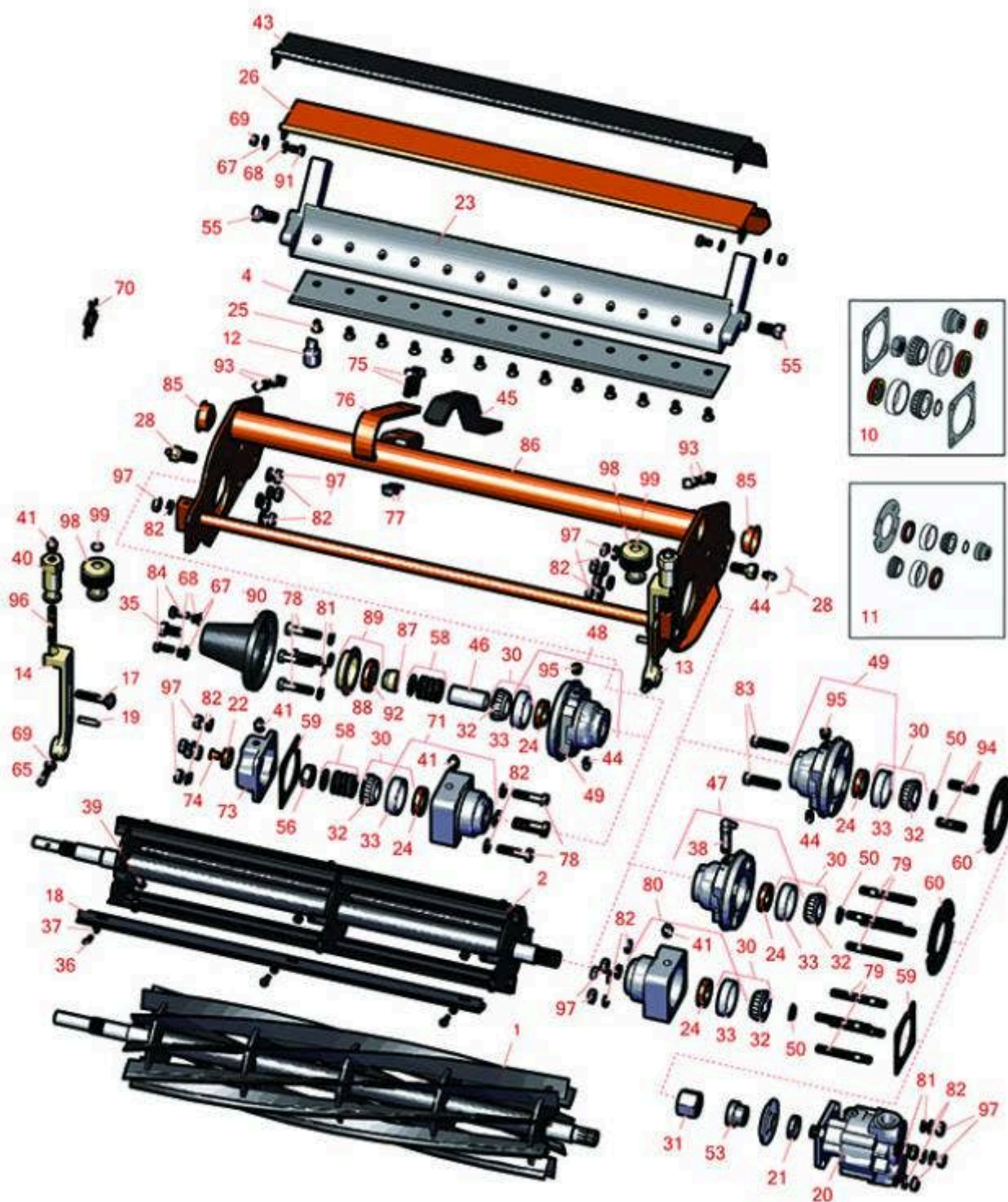


Replaces Jacobsen Greens King IV Parts

Cutting Unit - LH Models 62841, 62843, 62845 & 62847 &

RH Models 62842, 62844, 62846, & 62848

Reel & Bedknife



All original equipment manufacturers names and part numbers are used for identification purposes only, and we are in no way implying that our products are original equipment parts. Prices subject to change without notice.



Replaces Jacobsen Greens King IV Parts

Cutting Unit - LH Models 62841, 62843, 62845 & 62847 &
RH Models 62842, 62844, 62846, & 62848
Reel & Bedknife



Item No	R&R Part No.	OEM Part No.	Description	Qty Req	Order Quantity
---------	--------------	--------------	-------------	---------	----------------

R&R Reels - Replaces Greens King IV (62221) Splined Shaft Reel, 1/2" Shaft End

1	R503327		Reel - 4 Blade RH/Rear	2	
---	----------------	--	------------------------	---	--

Detail Description: R&R Reel blades are expertly crafted from premium high carbon-boron alloy steel, heat-treated to perfectly complement both R&R and OEM bedknives. Each reel undergoes precision cylindrical grinding on bearing surfaces, followed by relief grinding for optimal performance. Advanced computer balancing ensures extended reel and bearing life. Backed by our lifetime guarantee against defects in materials and craftsmanship under normal use, R&R Reels deliver unmatched durability and cutting precision you can trust.:

1	R503330		Reel - 4 Blade LH	1	
---	----------------	--	-------------------	---	--

Detail Description: R&R Reel blades are expertly crafted from premium high carbon-boron alloy steel, heat-treated to perfectly complement both R&R and OEM bedknives. Each reel undergoes precision cylindrical grinding on bearing surfaces, followed by relief grinding for optimal performance. Advanced computer balancing ensures extended reel and bearing life. Backed by our lifetime guarantee against defects in materials and craftsmanship under normal use, R&R Reels deliver unmatched durability and cutting precision you can trust.:

1	R506510		Reel - 5 Blade RH/Rear	2	
---	----------------	--	------------------------	---	--

Detail Description: R&R Reel blades are expertly crafted from premium high carbon-boron alloy steel, heat-treated to perfectly complement both R&R and OEM bedknives. Each reel undergoes precision cylindrical grinding on bearing surfaces, followed by relief grinding for optimal performance. Advanced computer balancing ensures extended reel and bearing life. Backed by our lifetime guarantee against defects in materials and craftsmanship under normal use, R&R Reels deliver unmatched durability and cutting precision you can trust.:

1	R506515		Reel - 5 Blade LH	1	
---	----------------	--	-------------------	---	--

Detail Description: R&R Reel blades are expertly crafted from premium high carbon-boron alloy steel, heat-treated to perfectly complement both R&R and OEM bedknives. Each reel undergoes precision cylindrical grinding on bearing surfaces, followed by relief grinding for optimal performance. Advanced computer balancing ensures extended reel and bearing life. Backed by our lifetime guarantee against defects in materials and craftsmanship under normal use, R&R Reels deliver unmatched durability and cutting precision you can trust.:

1	R506511		Reel - 5 Blade RH Heavy Duty	2	
---	----------------	--	------------------------------	---	--

All original equipment manufacturers names and part numbers are used for identification purposes only, and we are in no way implying that our products are original equipment parts. Prices subject to change without notice.



Replaces Jacobsen Greens King IV Parts

Cutting Unit - LH Models 62841, 62843, 62845 & 62847 &

RH Models 62842, 62844, 62846, & 62848

Reel & Bedknife



Item No	R&R Part No.	OEM Part No.	Description	Qty Req	Order Quantity
<i>Detail Description: R&R Reel blades are expertly crafted from premium high carbon-boron alloy steel, heat-treated to perfectly complement both R&R and OEM bedknives. Each reel undergoes precision cylindrical grinding on bearing surfaces, followed by relief grinding for optimal performance. Advanced computer balancing ensures extended reel and bearing life. Backed by our lifetime guarantee against defects in materials and craftsmanship under normal use, R&R Reels deliver unmatched durability and cutting precision you can trust.:</i>					
1	R506516		Reel - 5 Blade LH Heavy Duty	1	
<i>Detail Description: R&R Reel blades are expertly crafted from premium high carbon-boron alloy steel, heat-treated to perfectly complement both R&R and OEM bedknives. Each reel undergoes precision cylindrical grinding on bearing surfaces, followed by relief grinding for optimal performance. Advanced computer balancing ensures extended reel and bearing life. Backed by our lifetime guarantee against defects in materials and craftsmanship under normal use, R&R Reels deliver unmatched durability and cutting precision you can trust.:</i>					
1	R506620		Reel - 6 Blade RH/Rear	2	
<i>Detail Description: R&R Reel blades are expertly crafted from premium high carbon-boron alloy steel, heat-treated to perfectly complement both R&R and OEM bedknives. Each reel undergoes precision cylindrical grinding on bearing surfaces, followed by relief grinding for optimal performance. Advanced computer balancing ensures extended reel and bearing life. Backed by our lifetime guarantee against defects in materials and craftsmanship under normal use, R&R Reels deliver unmatched durability and cutting precision you can trust.:</i>					
1	R506630		Reel - 6 Blade LH	1	
<i>Detail Description: R&R Reel blades are expertly crafted from premium high carbon-boron alloy steel, heat-treated to perfectly complement both R&R and OEM bedknives. Each reel undergoes precision cylindrical grinding on bearing surfaces, followed by relief grinding for optimal performance. Advanced computer balancing ensures extended reel and bearing life. Backed by our lifetime guarantee against defects in materials and craftsmanship under normal use, R&R Reels deliver unmatched durability and cutting precision you can trust.:</i>					
1	R502870	502870	Reel - 9 Blade RH/Rear	2	
<i>Detail Description: R&R Reel blades are expertly crafted from premium high carbon-boron alloy steel, heat-treated to perfectly complement both R&R and OEM bedknives. Each reel undergoes precision cylindrical grinding on bearing surfaces, followed by relief grinding for optimal performance. Advanced computer balancing ensures extended reel and bearing life. Backed by our lifetime guarantee against defects in materials and craftsmanship under normal use, R&R Reels deliver unmatched durability and cutting precision you can trust.:</i>					

All original equipment manufacturers names and part numbers are used for identification purposes only, and we are in no way implying that our products are original equipment parts. Prices subject to change without notice.



Replaces Jacobsen Greens King IV Parts

Cutting Unit - LH Models 62841, 62843, 62845 & 62847 &

RH Models 62842, 62844, 62846, & 62848

Reel & Bedknife



Item No	R&R Part No.	OEM Part No.	Description	Qty Req	Order Quantity
1	R503319	5001095, 5003053, 503319	Reel - 7 Blade LH	1	
<i>Detail Description: R&R Reel blades are expertly crafted from premium high carbon-boron alloy steel, heat-treated to perfectly complement both R&R and OEM bedknives. Each reel undergoes precision cylindrical grinding on bearing surfaces, followed by relief grinding for optimal performance. Advanced computer balancing ensures extended reel and bearing life. Backed by our lifetime guarantee against defects in materials and craftsmanship under normal use, R&R Reels deliver unmatched durability and cutting precision you can trust.:</i>					
1	R503320	5001096, 5003054, 5003064, 503320	Reel - 7 Blade RH	1	
<i>Detail Description: R&R Reel blades are expertly crafted from premium high carbon-boron alloy steel, heat-treated to perfectly complement both R&R and OEM bedknives. Each reel undergoes precision cylindrical grinding on bearing surfaces, followed by relief grinding for optimal performance. Advanced computer balancing ensures extended reel and bearing life. Backed by our lifetime guarantee against defects in materials and craftsmanship under normal use, R&R Reels deliver unmatched durability and cutting precision you can trust.:</i>					
1	R502871	502871	Reel - 9 Blade LH	1	
<i>Detail Description: R&R Reel blades are expertly crafted from premium high carbon-boron alloy steel, heat-treated to perfectly complement both R&R and OEM bedknives. Each reel undergoes precision cylindrical grinding on bearing surfaces, followed by relief grinding for optimal performance. Advanced computer balancing ensures extended reel and bearing life. Backed by our lifetime guarantee against defects in materials and craftsmanship under normal use, R&R Reels deliver unmatched durability and cutting precision you can trust.:</i>					
1	R502870H		Reel - 9 Blade Heavy Duty RH/Rear	2	
<i>Detail Description: R&R Reel blades are expertly crafted from premium high carbon-boron alloy steel, heat-treated to perfectly complement both R&R and OEM bedknives. Each reel undergoes precision cylindrical grinding on bearing surfaces, followed by relief grinding for optimal performance. Advanced computer balancing ensures extended reel and bearing life. Backed by our lifetime guarantee against defects in materials and craftsmanship under normal use, R&R Reels deliver unmatched durability and cutting precision you can trust.:</i>					
1	R502871H		Reel - 9 Blade Heavy Duty LH	1	

All original equipment manufacturers names and part numbers are used for identification purposes only, and we are in no way implying that our products are original equipment parts. Prices subject to change without notice.



Replaces Jacobsen Greens King IV Parts

Cutting Unit - LH Models 62841, 62843, 62845 & 62847 &

RH Models 62842, 62844, 62846, & 62848

Reel & Bedknife



Item No	R&R Part No.	OEM Part No.	Description	Qty Req	Order Quantity
---------	--------------	--------------	-------------	---------	----------------

Detail Description: R&R Reel blades are expertly crafted from premium high carbon-boron alloy steel, heat-treated to perfectly complement both R&R and OEM bedknives. Each reel undergoes precision cylindrical grinding on bearing surfaces, followed by relief grinding for optimal performance. Advanced computer balancing ensures extended reel and bearing life. Backed by our lifetime guarantee against defects in materials and craftsmanship under normal use, R&R Reels deliver unmatched durability and cutting precision you can trust.:

1	R506633		Reel - 11 Blade RH/Rear	2	
---	----------------	--	-------------------------	---	--

Detail Description: R&R Reel blades are expertly crafted from premium high carbon-boron alloy steel, heat-treated to perfectly complement both R&R and OEM bedknives. Each reel undergoes precision cylindrical grinding on bearing surfaces, followed by relief grinding for optimal performance. Advanced computer balancing ensures extended reel and bearing life. Backed by our lifetime guarantee against defects in materials and craftsmanship under normal use, R&R Reels deliver unmatched durability and cutting precision you can trust.:

1	R506634		Reel - 11 Blade LH	1	
---	----------------	--	--------------------	---	--

Detail Description: R&R Reel blades are expertly crafted from premium high carbon-boron alloy steel, heat-treated to perfectly complement both R&R and OEM bedknives. Each reel undergoes precision cylindrical grinding on bearing surfaces, followed by relief grinding for optimal performance. Advanced computer balancing ensures extended reel and bearing life. Backed by our lifetime guarantee against defects in materials and craftsmanship under normal use, R&R Reels deliver unmatched durability and cutting precision you can trust.:

R&R Reels - Replaces Greens King IV (62228 & UP) Splined & Keyed Shaft, 5/8" Shaft End

1	R506502		Reel - 5 Blade RH	2	
---	----------------	--	-------------------	---	--

Detail Description: R&R Reel blades are expertly crafted from premium high carbon-boron alloy steel, heat-treated to perfectly complement both R&R and OEM bedknives. Each reel undergoes precision cylindrical grinding on bearing surfaces, followed by relief grinding for optimal performance. Advanced computer balancing ensures extended reel and bearing life. Backed by our lifetime guarantee against defects in materials and craftsmanship under normal use, R&R Reels deliver unmatched durability and cutting precision you can trust.:

1	R506503		Reel - 5 Blade LH	1	
---	----------------	--	-------------------	---	--

Detail Description: R&R Reel blades are expertly crafted from premium high carbon-boron alloy steel, heat-treated to perfectly complement both R&R and OEM bedknives. Each reel undergoes precision cylindrical grinding on bearing surfaces, followed by relief grinding for optimal performance. Advanced computer balancing ensures extended reel and bearing life. Backed by our lifetime guarantee against defects in materials and craftsmanship under normal use, R&R Reels deliver unmatched durability and cutting precision you can trust.:

All original equipment manufacturers names and part numbers are used for identification purposes only, and we are in no way implying that our products are original equipment parts. Prices subject to change without notice.



Replaces Jacobsen Greens King IV Parts

Cutting Unit - LH Models 62841, 62843, 62845 & 62847 &
RH Models 62842, 62844, 62846, & 62848
Reel & Bedknife



Item No	R&R Part No.	OEM Part No.	Description	Qty Req	Order Quantity
1	R506507		Reel - 5 Blade RH Heavy Duty	2	
<i>Detail Description: R&R Reel blades are expertly crafted from premium high carbon-boron alloy steel, heat-treated to perfectly complement both R&R and OEM bedknives. Each reel undergoes precision cylindrical grinding on bearing surfaces, followed by relief grinding for optimal performance. Advanced computer balancing ensures extended reel and bearing life. Backed by our lifetime guarantee against defects in materials and craftsmanship under normal use, R&R Reels deliver unmatched durability and cutting precision you can trust.:</i>					
1	R506508		Reel - 5 Blade LH Heavy Duty	1	
<i>Detail Description: R&R Reel blades are expertly crafted from premium high carbon-boron alloy steel, heat-treated to perfectly complement both R&R and OEM bedknives. Each reel undergoes precision cylindrical grinding on bearing surfaces, followed by relief grinding for optimal performance. Advanced computer balancing ensures extended reel and bearing life. Backed by our lifetime guarantee against defects in materials and craftsmanship under normal use, R&R Reels deliver unmatched durability and cutting precision you can trust.:</i>					
1	R503376	5001100, 503376	Reel - 9 Blade RH	2	
<i>Detail Description: R&R Reel blades are expertly crafted from premium high carbon-boron alloy steel, heat-treated to perfectly complement both R&R and OEM bedknives. Each reel undergoes precision cylindrical grinding on bearing surfaces, followed by relief grinding for optimal performance. Advanced computer balancing ensures extended reel and bearing life. Backed by our lifetime guarantee against defects in materials and craftsmanship under normal use, R&R Reels deliver unmatched durability and cutting precision you can trust.:</i>					
1	R503375	5001099, 503375	Reel - 9 Blade LH	1	
<i>Detail Description: R&R Reel blades are expertly crafted from premium high carbon-boron alloy steel, heat-treated to perfectly complement both R&R and OEM bedknives. Each reel undergoes precision cylindrical grinding on bearing surfaces, followed by relief grinding for optimal performance. Advanced computer balancing ensures extended reel and bearing life. Backed by our lifetime guarantee against defects in materials and craftsmanship under normal use, R&R Reels deliver unmatched durability and cutting precision you can trust.:</i>					
1	R506512		Reel - 9 Blade RH Heavy Duty	2	

All original equipment manufacturers names and part numbers are used for identification purposes only, and we are in no way implying that our products are original equipment parts. Prices subject to change without notice.



Replaces Jacobsen Greens King IV Parts

Cutting Unit - LH Models 62841, 62843, 62845 & 62847 &

RH Models 62842, 62844, 62846, & 62848

Reel & Bedknife



Item No	R&R Part No.	OEM Part No.	Description	Qty Req	Order Quantity
---------	--------------	--------------	-------------	---------	----------------

Detail Description: R&R Reel blades are expertly crafted from premium high carbon-boron alloy steel, heat-treated to perfectly complement both R&R and OEM bedknives. Each reel undergoes precision cylindrical grinding on bearing surfaces, followed by relief grinding for optimal performance. Advanced computer balancing ensures extended reel and bearing life. Backed by our lifetime guarantee against defects in materials and craftsmanship under normal use, R&R Reels deliver unmatched durability and cutting precision you can trust.:

1	R506513		Reel - 9 Blade Heavy Duty LH	1	
---	----------------	--	------------------------------	---	--

Detail Description: R&R Reel blades are expertly crafted from premium high carbon-boron alloy steel, heat-treated to perfectly complement both R&R and OEM bedknives. Each reel undergoes precision cylindrical grinding on bearing surfaces, followed by relief grinding for optimal performance. Advanced computer balancing ensures extended reel and bearing life. Backed by our lifetime guarantee against defects in materials and craftsmanship under normal use, R&R Reels deliver unmatched durability and cutting precision you can trust.:

1	R506635	5000029, 5001102	Reel - 11 Blade RH	2	
---	----------------	---------------------	--------------------	---	--

Detail Description: R&R Reel blades are expertly crafted from premium high carbon-boron alloy steel, heat-treated to perfectly complement both R&R and OEM bedknives. Each reel undergoes precision cylindrical grinding on bearing surfaces, followed by relief grinding for optimal performance. Advanced computer balancing ensures extended reel and bearing life. Backed by our lifetime guarantee against defects in materials and craftsmanship under normal use, R&R Reels deliver unmatched durability and cutting precision you can trust.:

1	R506636	5000028, 5001101, 506636	Reel - 11 Blade LH	1	
---	----------------	--------------------------------	--------------------	---	--

Detail Description: R&R Reel blades are expertly crafted from premium high carbon-boron alloy steel, heat-treated to perfectly complement both R&R and OEM bedknives. Each reel undergoes precision cylindrical grinding on bearing surfaces, followed by relief grinding for optimal performance. Advanced computer balancing ensures extended reel and bearing life. Backed by our lifetime guarantee against defects in materials and craftsmanship under normal use, R&R Reels deliver unmatched durability and cutting precision you can trust.:

R&R Brush Reels Available - Replaces Greens King IV (62221) Splined Shaft Reel, 1/2" Shaft End

2	R101487		Brush Reel - RH-Rear	2	
---	----------------	--	----------------------	---	--

All original equipment manufacturers names and part numbers are used for identification purposes only, and we are in no way implying that our products are original equipment parts. Prices subject to change without notice.



Replaces Jacobsen Greens King IV Parts

Cutting Unit - LH Models 62841, 62843, 62845 & 62847 &

RH Models 62842, 62844, 62846, & 62848

Reel & Bedknife



Item No	R&R Part No.	OEM Part No.	Description	Qty Req	Order Quantity
---------	--------------	--------------	-------------	---------	----------------

*Detail Description: R&R Products Brush Reels are an exciting concept in greens maintenance to clean sand and other debris left on grass surfaces after top dressing. If left on the turf, this sand and debris can cause dulling and excessive wear on mowing reels and bed knives. However, with the use of R&R Brush Reels, sand and debris are easily swept into conventional grass baskets. R&R Brush Reels are also used to stand turf up before mowing to give a cleaner, more uniform and truer putting surface. Designed with four replaceable brushes mounted in a metal frame, simply replace regular mowing reels with R&R Brush Reels and adjust bedknife to clear the brushes. The height of cut should be set to the top of the grass blades or slightly below. *Remove bedknife for the removal of pine needles.

SUGGESTED USAGE: Verticutting - Dew Removal - Leaf Clean Up - Thatch Prevention Prior to Overseeding - Grooming before Mowing - Removal of Excessive Top Dressing:*

2	R101488		Brush Reel - LH	1	
---	----------------	--	-----------------	---	--

*Detail Description: R&R Products Brush Reels are an exciting concept in greens maintenance to clean sand and other debris left on grass surfaces after top dressing. If left on the turf, this sand and debris can cause dulling and excessive wear on mowing reels and bed knives. However, with the use of R&R Brush Reels, sand and debris are easily swept into conventional grass baskets. R&R Brush Reels are also used to stand turf up before mowing to give a cleaner, more uniform and truer putting surface. Designed with four replaceable brushes mounted in a metal frame, simply replace regular mowing reels with R&R Brush Reels and adjust bedknife to clear the brushes. The height of cut should be set to the top of the grass blades or slightly below. *Remove bedknife for the removal of pine needles.

SUGGESTED USAGE: Verticutting - Dew Removal - Leaf Clean Up - Thatch Prevention Prior to Overseeding - Grooming before Mowing - Removal of Excessive Top Dressing:*

R&R Brush Reels Available - Replaces Greens King IV (62228 & UP) Splined & Keyed Shaft, 5/8" Shaft End

2	R101490		Brush Reel - RH	2	
---	----------------	--	-----------------	---	--

*Detail Description: R&R Products Brush Reels are an exciting concept in greens maintenance to clean sand and other debris left on grass surfaces after top dressing. If left on the turf, this sand and debris can cause dulling and excessive wear on mowing reels and bed knives. However, with the use of R&R Brush Reels, sand and debris are easily swept into conventional grass baskets. R&R Brush Reels are also used to stand turf up before mowing to give a cleaner, more uniform and truer putting surface. Designed with four replaceable brushes mounted in a metal frame, simply replace regular mowing reels with R&R Brush Reels and adjust bedknife to clear the brushes. The height of cut should be set to the top of the grass blades or slightly below. *Remove bedknife for the removal of pine needles.

SUGGESTED USAGE: Verticutting - Dew Removal - Leaf Clean Up - Thatch Prevention Prior to Overseeding - Grooming before Mowing - Removal of Excessive Top Dressing:*

2	R101491		Brush Reel - LH Keyed Shaft	1	
---	----------------	--	-----------------------------	---	--

All original equipment manufacturers names and part numbers are used for identification purposes only, and we are in no way implying that our products are original equipment parts. Prices subject to change without notice.



Replaces Jacobsen Greens King IV Parts

Cutting Unit - LH Models 62841, 62843, 62845 & 62847 &

RH Models 62842, 62844, 62846, & 62848

Reel & Bedknife



Item No	R&R Part No.	OEM Part No.	Description	Qty Req	Order Quantity
---------	--------------	--------------	-------------	---------	----------------

***Detail Description:** R&R Products Brush Reels are an exciting concept in greens maintenance to clean sand and other debris left on grass surfaces after top dressing. If left on the turf, this sand and debris can cause dulling and excessive wear on mowing reels and bed knives. However, with the use of R&R Brush Reels, sand and debris are easily swept into conventional grass baskets. R&R Brush Reels are also used to stand turf up before mowing to give a cleaner, more uniform and truer putting surface. Designed with four replaceable brushes mounted in a metal frame, simply replace regular mowing reels with R&R Brush Reels and adjust bedknife to clear the brushes. The height of cut should be set to the top of the grass blades or slightly below. *Remove bedknife for the removal of pine needles.

SUGGESTED USAGE: Verticutting - Dew Removal - Leaf Clean Up - Thatch Prevention Prior to Overseeding - Grooming before Mowing - Removal of Excessive Top Dressing:*

R&R Bedknives, Lifetime Guaranteed

4	R503477	101261, 503027, 503477, 549397	Bedknife - Thick .156-.438 HOC	1
---	----------------	---	--------------------------------	---

***Detail Description:** R&R Bedknives are manufactured from high carbon-boron alloy steel and then hardened to RC46-49 to match the temper of our reel blades and original equipment reels. Bedknives are surface ground on the top and front edge and straightened three times before being packaged with oil for rust prevention. All R&R Bedknives now have an increased front edge grind for added life. All R&R Bedknives are guaranteed against defects in material and workmanship under normal use for the life of the part.:*

4	R101262		Bedknife - Super Thick 5/16	1
---	----------------	--	-----------------------------	---

***Detail Description:** R&R Bedknives are manufactured from high carbon-boron alloy steel and then hardened to RC46-49 to match the temper of our reel blades and original equipment reels. Bedknives are surface ground on the top and front edge and straightened three times before being packaged with oil for rust prevention. All R&R Bedknives now have an increased front edge grind for added life. All R&R Bedknives are guaranteed against defects in material and workmanship under normal use for the life of the part.:*

4	R503478	101260, 503028, 503478, 549504	Bedknife - Thin .125-.219 HOC	1
---	----------------	---	-------------------------------	---

All original equipment manufacturers names and part numbers are used for identification purposes only, and we are in no way implying that our products are original equipment parts. Prices subject to change without notice.



Replaces Jacobsen Greens King IV Parts

Cutting Unit - LH Models 62841, 62843, 62845 & 62847 &
RH Models 62842, 62844, 62846, & 62848
Reel & Bedknife



Item No	R&R Part No.	OEM Part No.	Description	Qty Req	Order Quantity
<i>Detail Description: R&R Bedknives are manufactured from high carbon-boron alloy steel and then hardened to RC46-49 to match the temper of our reel blades and original equipment reels. Bedknives are surface ground on the top and front edge and straightened three times before being packaged with oil for rust prevention. All R&R Bedknives now have an increased front edge grind for added life. All R&R Bedknives are guaranteed against defects in material and workmanship under normal use for the life of the part.:</i>					
4	R503479	503029, 503479	Bedknife - Tournament .094-.156 HOC	1	
<i>Detail Description: R&R Bedknives are manufactured from high carbon-boron alloy steel and then hardened to RC46-49 to match the temper of our reel blades and original equipment reels. Bedknives are surface ground on the top and front edge and straightened three times before being packaged with oil for rust prevention. All R&R Bedknives now have an increased front edge grind for added life. All R&R Bedknives are guaranteed against defects in material and workmanship under normal use for the life of the part.:</i>					
4	R4234900	5000927	Bedknife - Tournament .063-.110	1	
<i>Detail Description: R&R Bedknives are manufactured from high carbon-boron alloy steel and then hardened to RC46-49 to match the temper of our reel blades and original equipment reels. Bedknives are surface ground on the top and front edge and straightened three times before being packaged with oil for rust prevention. All R&R Bedknives now have an increased front edge grind for added life. All R&R Bedknives are guaranteed against defects in material and workmanship under normal use for the life of the part.:</i>					
4	R5002887	5002887	Bedknife - Micro Cut - .082-.109	1	
<i>Detail Description: R&R Bedknives are manufactured from high carbon-boron alloy steel and then hardened to RC46-49 to match the temper of our reel blades and original equipment reels. Bedknives are surface ground on the top and front edge and straightened three times before being packaged with oil for rust prevention. All R&R Bedknives now have an increased front edge grind for added life. All R&R Bedknives are guaranteed against defects in material and workmanship under normal use for the life of the part.:</i>					
4	R5003150	5003150	Bedknife - Low Cut	1	
<i>Detail Description: R&R Bedknives are manufactured from high carbon-boron alloy steel and then hardened to RC46-49 to match the temper of our reel blades and original equipment reels. Bedknives are surface ground on the top and front edge and straightened three times before being packaged with oil for rust prevention. All R&R Bedknives now have an increased front edge grind for added life. All R&R Bedknives are guaranteed against defects in material and workmanship under normal use for the life of the part.:</i>					

R&R Razor Tool Steel Bedknives, Lifetime Guaranteed

All original equipment manufacturers names and part numbers are used for identification purposes only, and we are in no way implying that our products are original equipment parts. Prices subject to change without notice.



Replaces Jacobsen Greens King IV Parts

Cutting Unit - LH Models 62841, 62843, 62845 & 62847 &
RH Models 62842, 62844, 62846, & 62848
Reel & Bedknife



Item No	R&R Part No.	OEM Part No.	Description	Qty Req	Order Quantity
4	R101520		Bedknife - Razor Tool Steel - 22 Micro Cut	1	

Detail Description: R&R Razor bedknives are manufactured from premium alloy tool steel steel and then hardened to RC48-51 to match the temper of our Razor reel blades and original equipment premium series reels. Bedknives are surface ground on the top and front edge and specially packaged for rust prevention. All R&R Bedknives now have an increased front edge grind for added life. All R&R Bedknives are guaranteed against defects in material and workmanship under normal use for the life of the part. You can expect up to double the life over standard bedknives.:

4	R101521		Bedknife - Razor Tool Steel - 22 Tournament Cut	1	
---	---------	--	---	---	--

Detail Description: R&R Razor bedknives are manufactured from premium alloy tool steel steel and then hardened to RC48-51 to match the temper of our Razor reel blades and original equipment premium series reels. Bedknives are surface ground on the top and front edge and specially packaged for rust prevention. All R&R Bedknives now have an increased front edge grind for added life. All R&R Bedknives are guaranteed against defects in material and workmanship under normal use for the life of the part. You can expect up to double the life over standard bedknives.:

Overhaul Kits & Service Tools

10	R506555		Overhaul Kit - Cutting Unit	0	
----	---------	--	-----------------------------	---	--

Tech Note: Fits GK IV (62221) with square bearing housings.:

Detail Description: Includes 2 ea.: R336962 Seals, R345473 Gaskets, R254-78 Bearings, R254-79 Bearing Cups; 1 ea.: R335435 Seal, R337370 Coupling, R458013 Ring & R444713 Locknut:

11	R100125		Overhaul Kit - Cutting Unit	0	
----	---------	--	-----------------------------	---	--

Tech Note: Fits GK IV (62228 & 62229) with round bearing housings.:

Detail Description: Includes 2 ea.: R336962 Seals, R254-78 Bearings, R254-79 Cups; 1 ea.: R337677 Seal, R458013 Ring, R364901 Gasket, R337370 Coupling:

12	R101272T		Bedknife Screw Driver Tool	0	
----	----------	--	----------------------------	---	--

Tech Note: Easily install and remove bed knife screws with the help of a ratchet. Tool manufactured with hardened alloy steel.:

All original equipment manufacturers names and part numbers are used for identification purposes only, and we are in no way implying that our products are original equipment parts. Prices subject to change without notice.



Replaces Jacobsen Greens King IV Parts

Cutting Unit - LH Models 62841, 62843, 62845 & 62847 &

RH Models 62842, 62844, 62846, & 62848

Reel & Bedknife



Item No	R&R Part No.	OEM Part No.	Description	Qty Req	Order Quantity
---------	--------------	--------------	-------------	---------	----------------

Detail Description: Easily install and remove bed knife screws with the help of a ratchet. Tool manufactured with hardened alloy steel.:

Other Parts Available

13	R153980	153980, 3008438	Bracket - Front Roller	1	
13	R163232	163232	Bracket - Extra Long - Front Roller	1	
14	R153979	153979, 3008439	Bracket - Front Roller	1	
14	R163231	163231	Bracket - Extra Long - Front Roller	1	
17	R441674	441674	Screw - 5/16-18 x 1-3/4 Carriage	2	
18	R150481	150481	Brush Assy - Brush Reel	4	
19	R461256	461256	Pin - 1/4 x 1	2	
20	R122164	122164	Motor - Reel	3	
<i>Tech Note: Fits GKIV 4 Bolt Mount:</i>					
20	R502737	502737	Seal Kit - Fits R122164 Hyd Motor	1	
21	R353-585		Seal - High Pressure - Reel Motor	1	
22	R335435	335435	Seal - Reel Housing	1	
23	R220278	121856, 220278, 5000415	Backing Bar - Cast	1	
24	R325472	325472	Seal	4	
24	R336962	336962	Seal	4	

All original equipment manufacturers names and part numbers are used for identification purposes only, and we are in no way implying that our products are original equipment parts. Prices subject to change without notice.



Replaces Jacobsen Greens King IV Parts

Cutting Unit - LH Models 62841, 62843, 62845 & 62847 &

RH Models 62842, 62844, 62846, & 62848

Reel & Bedknife



Item No	R&R Part No.	OEM Part No.	Description	Qty Req	Order Quantity
25	R101272	101272, 3009138, 402578, 800813	Screw - Bedknife 1/4-20 x 1/2	13	
26	R390950	126724, 2810043, 390950	Shield - Grass	1	
28	R1002224	1002224	Bolt - Rear Roller 3/8-24	2	
<i>Detail Description: Incl Grease Zerk:</i>					
28	R345470	1002226, 345470	Bolt - Rear Roller 7/16-20	2	
<i>Detail Description: Incl. Grease Zerk:</i>					
30	R500534	500534, R500534	Bearing - with Cup	2	
<i>Detail Description: Kit includes: 1 ea R254-78- Bearing Cone & R254-79 Bearing Cone:</i>					
31	R345477	345477	Nut - Coupling LH (RH Threads)	2	
<i>Detail Description: Right Hand Threads:</i>					
31	R345478	345478	Nut - Coupling RH (LH Threads)	2	
<i>Detail Description: Left Hand Threads:</i>					
32	R254-78	254-78, 385174, 4121174, 4135152	Tapered Bearing Cone	2	
33	R254-79	254-79, 4121175	Cup - Bearing	2	
<i>Detail Description: Use R254-79M installation mandrel to properly install race.:</i>					
35	R400294	400294	Screw - 3/8 24 x 3/4 Hex C/Zinc	1	

All original equipment manufacturers names and part numbers are used for identification purposes only, and we are in no way implying that our products are original equipment parts. Prices subject to change without notice.



Replaces Jacobsen Greens King IV Parts

Cutting Unit - LH Models 62841, 62843, 62845 & 62847 &
RH Models 62842, 62844, 62846, & 62848
Reel & Bedknife



Item No	R&R Part No.	OEM Part No.	Description	Qty Req	Order Quantity
36	R150425	150425	Bolt - Hex HD 8-32 x 5/8	12	
37	R150426	150426	Washer - 8 SAE	12	
38	R363896	363896	Fitting - Grease w/Extension	2	
39	R3296-9		Locknut - Comb	12	
40	R365009	3005692, 365009, 365170, 441674	Knob - Adjusting Roller	2	
41	R471219	366852, 471219	Zerk - Grease	2	
43	R2810043	2810043	Shield - Grass	1	
44	R302-5	302-5, 471214, 471223, 471226	Fitting - Grease	2	
45	R3010293	3010293	Stop - Mower	1	
46	R367164	367164	Spacer - Reel	1	
47	R163396	163396	Housing - Reel Brg Motor End	1	
<i>Detail Description: Includes: 4 ea: R361097 Stud; 1 ea: R254-79 Cup, R336962 Seal, R363896 Grease Fitting;</i>					
48	R164144	1000480, 163397, 164144, 2000060	Housing - Reel Bearing	1	
<i>Detail Description: Includes R336962 Seal, R302-5 Zerk, R170714 Relief Fitting & R254-79 Cup:</i>					
49	R164146	163679, 164146	Housing - Reel Bearing - Motor End	1	

Tech Note: Housing has no studs, uses 2 bolts:

All original equipment manufacturers names and part numbers are used for identification purposes only, and we are in no way implying that our products are original equipment parts. Prices subject to change without notice.



Replaces Jacobsen Greens King IV Parts

Cutting Unit - LH Models 62841, 62843, 62845 & 62847 &

RH Models 62842, 62844, 62846, & 62848

Reel & Bedknife



Item No	R&R Part No.	OEM Part No.	Description	Qty Req	Order Quantity
<i>Detail Description: Includes: 1 ea: R170714 Fitting, R254-79 Cup, R302-5 Fitting & R336962 Seal:</i>					
49	R101328		Housing - Bearing Motor End	1	
<i>Detail Description: Includes R302-5, R336962, R170714, R101327 & Cup Portion of R500534. Housing has 2 studs, uses no bolts:</i>					
50	R458013	458013	Ring - Retaining	1	
53	R4247911	162567, 337370, 4247911	Coupling - Hyd Motor - Glass Filled	1	
53	R3001720	3001720	Coupler - Iron - Hyd Motor	1	
55	R315298	315298	Bolt - Bed Bar	2	
56	R444713	444713	Locknut - 5/8-18 Hex Center	1	
56	R453020	453020	Washer - 5/8 SAE Flat Z	1	
58	R363047	348846, 363047	Spring - Reel	1	
58	R5002151	5002151	Hardware Kit - Spring/Washer	1	
<i>Detail Description: Includes 1 ea: R304745 Washer, R363047 Spring:</i>					
59	R345473	345473	Gasket - Reel Motor	1	
60	R364901	364901	Gasket - Reel Motor	1	
65	R352737	352737	Screw - Set 1/4 x 7/8 Sq Head	2	
67	R453023	453023	Washer - Flat 1/4	2	
68	R3253-3	3253-3, 446128, 446130	Washer - Lock 1/4	4	
69	R443102	443102	Nut - 1/4-20 Yellow Zinc	2	

All original equipment manufacturers names and part numbers are used for identification purposes only, and we are in no way implying that our products are original equipment parts. Prices subject to change without notice.



Replaces Jacobsen Greens King IV Parts

Cutting Unit - LH Models 62841, 62843, 62845 & 62847 &

RH Models 62842, 62844, 62846, & 62848

Reel & Bedknife



Item No	R&R Part No.	OEM Part No.	Description	Qty Req	Order Quantity
70	R363808	363808	Blade - V-Cut 2 Dia	85	
71	R239055	239055	Housing - Reel Bearing Short	1	
<i>Detail Description: Includes R336962 Seal & R254-79 Bearing Cup:</i>					
73	R269037	269037	Cap - Reel Housing	1	
74	R352132	352132	Caplug - Reel Shaft End	1	
75	R403751	403751	Bolt - Serrated Washer HD	2	
76	R354928	354928	Stop - Mower	1	
77	R445722	445722	Nut - Serrated Washer	2	
78	R400192	400192	Bolt - Hex HD 5/16-18 x 1-1/2	4	
79	R361097	361097	Stud - Reel Brg Housing	4	
80	R162558	162558	Housing - Reel Bearing Tall	1	
<i>Detail Description: Includes: 4 ea: R361097 Stud; 1 ea: R254-79 Cup, R336962 Seal, R471219 Grease Fitting:</i>					
81	R453009	3256-23, 452004, 452006, 452008, 453009	Washer - Flat 5/16 SAE	4	
82	R446136	446134, 446136	Washer - Lock 5/16 Zinc	12	
83	R441812	441812	Screw - 3/8-1-1/2 Sq HD Set	2	
84	R321-4	321-4, 400108	Bolt - Hex HD 1/4-20 x 3/4	1	
85	R285-14		Plug - Pipe Frame	2	
86	R4256225	4256225	Frame - 22 in Cutting Unit	1	

All original equipment manufacturers names and part numbers are used for identification purposes only, and we are in no way implying that our products are original equipment parts. Prices subject to change without notice.



Replaces Jacobsen Greens King IV Parts

Cutting Unit - LH Models 62841, 62843, 62845 & 62847 &

RH Models 62842, 62844, 62846, & 62848

Reel & Bedknife



Item No	R&R Part No.	OEM Part No.	Description	Qty Req	Order Quantity
87	R364900	364900	Nut - Reel Tension	1	
88	R363814	163892, 363814	Spacer - Seal	1	
89	R163398	163398, 163892	Seal - Spacer Assy	1	
90	R338675	338675, 557775	Cover - Shaft End	1	
91	R400104	400104	Bolt - Hex HD 1/4-20 x 1/2	2	
92	R337677	315257, 337677	Seal - Oil	1	
93	R412506	412503, 412506	Screw - Bed Bar Adjusting	4	
94	R101327		Stud - Housing	2	
<i>Detail Description: Fits R101328 Only:</i>					
95	R170714	170714, 471240, 471242	Fitting - Pressure Relief	2	
96	R343616	343616, 443102	Stud	2	
97	R443106	443106	Nut - 5/16-18 Y/Zinc Plated	12	
98	R343617	343617	Knob - Adjusting	2	
99	R472518	472518	Plug - Adjusting Knob	2	

All original equipment manufacturers names and part numbers are used for identification purposes only, and we are in no way implying that our products are original equipment parts. Prices subject to change without notice.