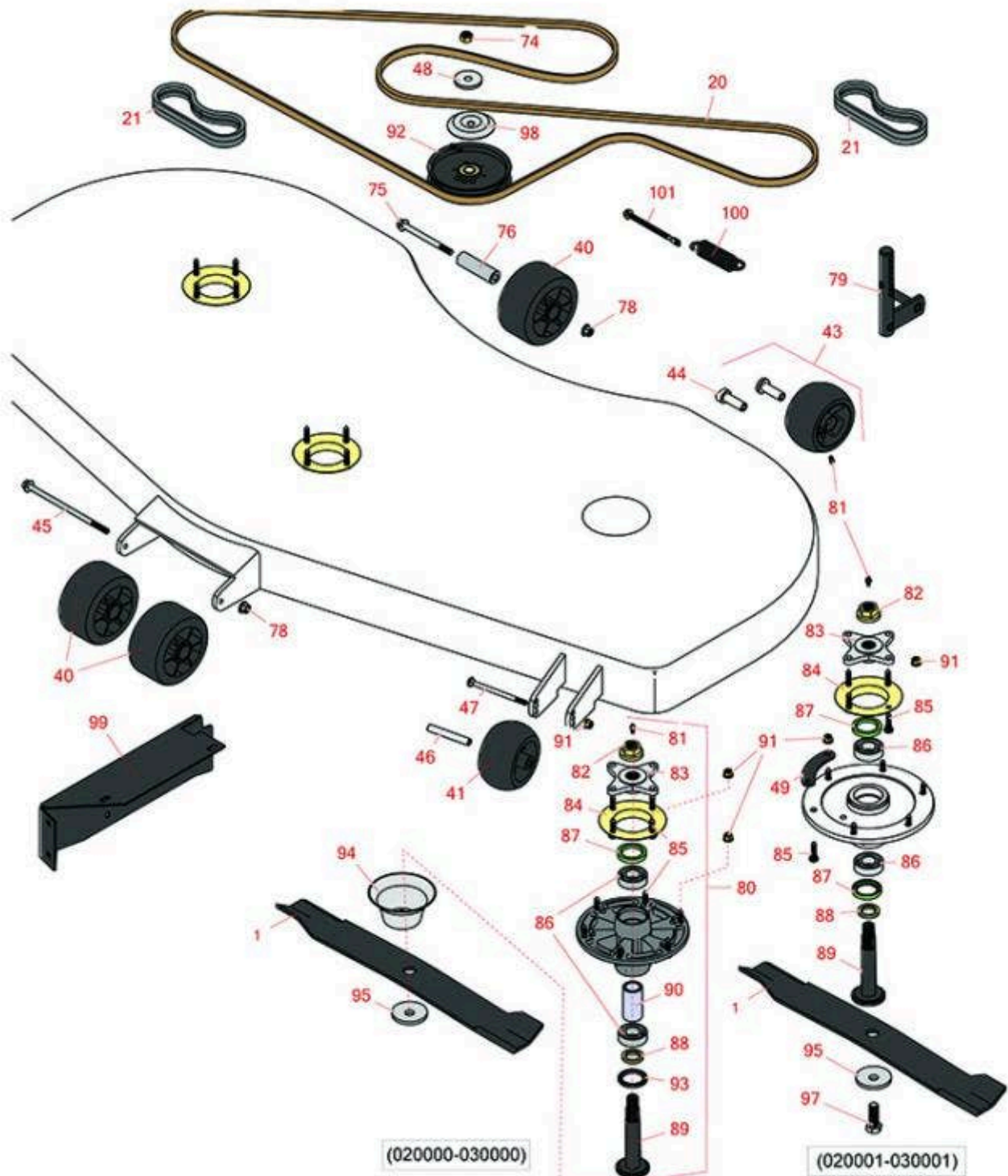




Replaces John Deere 1580 Rotary Mower Parts

Traction Unit
72in Deck Parts



All original equipment manufacturers names and part numbers are used for identification purposes only, and we are in no way implying that our products are original equipment parts. Prices subject to change without notice.



Replaces John Deere 1580 Rotary Mower Parts

Traction Unit
72in Deck Parts



Item No	R&R Part No.	OEM Part No.	Description	Qty Req	Order Quantity
---------	--------------	--------------	-------------	---------	----------------

Rotary Blades

1	RTCU15882	M143749, TCU15882	Mower Blade - High Lift - 25 x 3 x 1/4 w/.910 Hole	3	
---	------------------	----------------------	--	---	--

Belts

20	RTCU19900	TCU19900	Belt - V - Fits 72 in Decks	1	
----	------------------	----------	-----------------------------	---	--

Detail Description: Fits Model 2814 Only:

21	RTCA14778	TCA14778	Belt Set	3	
----	------------------	----------	----------	---	--

Other Parts Available

40	RTCU34060	TCU34060	Roller - 5 1/2 x 3	3	
41	RTCU18744	TCU18744, UC28193	Wheel - 5 in x 2 3/4	2	
43	RAM125172	AM125172	Wheel Kit - Gage Wheel	2	
44	RM111490	M111490	Bushing - Concave	2	
45	R19M10348	19M10348	Bolt- M10 x 200 w/Washer	1	
46	RTCU19299	TCU19299	Axle Bushing	2	
47	R03M7268	03M7268	Bolt - M8 x 120 Carriage 8.8	2	
48	RM132309	M132309	Spacer	2	
49	RTCU39458	TCU39458	Plate - Spindle Mount Reinforcement	9	
74	R14M7401	14M7401	Locknut - 12mm x 1.75	2	
75	R19M7944	19M7944	Bolt - M10-1.5 x 120 Hx HD Fl Cl 10.9	1	
76	RTCU28739	TCU28739	Axle	1	
78	R14M7465	14M7465	Lock Nut - M10-1.50 Fl	7	
79	RAM129501	AM129501	Arm	2	

All original equipment manufacturers names and part numbers are used for identification purposes only, and we are in no way implying that our products are original equipment parts. Prices subject to change without notice.



Replaces John Deere 1580 Rotary Mower Parts

Traction Unit
72in Deck Parts



Item No	R&R Part No.	OEM Part No.	Description	Qty Req	Order Quantity
80	RTCA24881	TCA24881	Spindle - Includes RM134305; Sub For TCA51058; Housing Assembly	3	
81	R471217	JD7803	Fitting - Grease	5	
82	RM123569	M123569	Flange Nut	3	
83	RTC38142	TCU14182, TCU38142	Hub - Sub For TCU51119 or TCU14182	3	
84	RTC51223	TCU51223	Deflector - Grass	3	
85	R19M7868	19M7868	Bolt - M8-1.25 x 30 HHF	30	
86	RM88251	M169375, M88251	Bearing - Spindle	6	
87	R253-133	M85699	Seal - Oil	3	
<i>Tech Note: FOR SPINDLE ASSEMBLY O.E.M TCA25356 (QTY.6):</i>					
88	RM163060	M133398, M163060	Washer - Replaces RM133398	3	
89	RM134382	M134382	Spindle - 25 mm w/M12-1.75 Blade Bolt Thrd	3	
89	RM163059	M163059	Spindle - 25 mm w/M16-2.0 Blade Bolt Thrd	3	
90	RM163058	M127517, M163058	Bushing - Sub For M127517	3	
91	R14M7396	14M7396	Locknut - Flanged Nyloc	31	
91	R14M7298	14M7298	Nut - 8mm x 1.25 Flanged	30	
<i>Tech Note: FOR SPINDLE ASSEMBLY O.E.M TCA25356:</i>					
92	RTCA17524	TCA17524	Idler Pulley - 5 in Flat Dia with .75 in Brg ID	1	
93	RM127198	M127198	Seal	3	
94	RM163053	M134305, M163053	Grass Deflector - Spindle	3	

All original equipment manufacturers names and part numbers are used for identification purposes only, and we are in no way implying that our products are original equipment parts. Prices subject to change without notice.



Replaces John Deere 1580 Rotary Mower Parts

*Traction Unit
72in Deck Parts*



Item No	R&R Part No.	OEM Part No.	Description	Qty Req	Order Quantity
95	RM123522	M123522	Washer - Belleville - Blade Bolt	3	
97	R19M7489	19M7489	Bolt Hex HD - M16 x 45 Gr 10.9	3	
98	RM133598	M133598	Shield	2	
99	RUC11397	UC11397	Gate - Bracket	1	
100	RM136044	M136044	Spring - Extension	1	
101	RM141764	M141764	Eyebolt - Includes Flanged Locknut	1	

All original equipment manufacturers names and part numbers are used for identification purposes only, and we are in no way implying that our products are original equipment parts. Prices subject to change without notice.