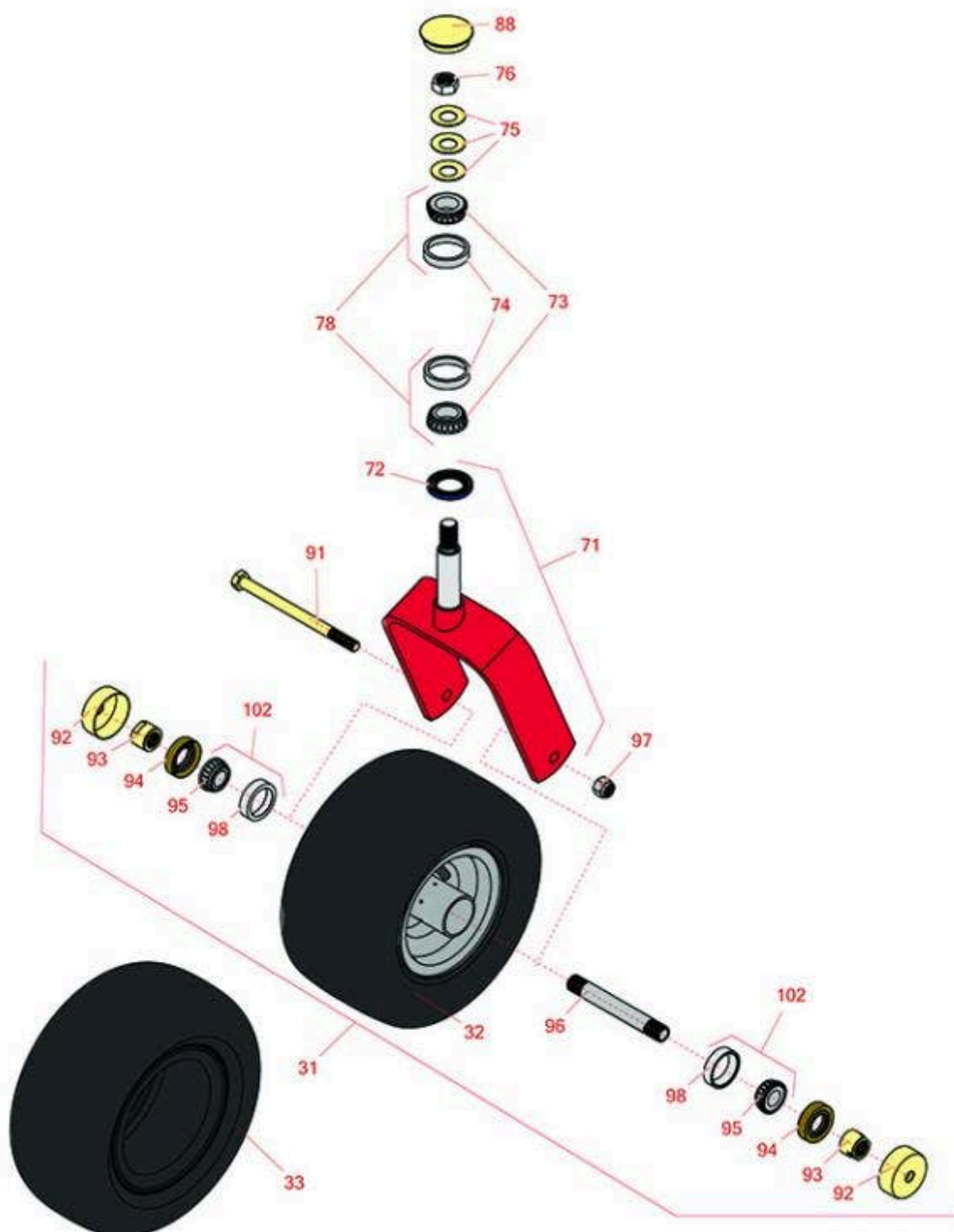




Replaces Exmark Lazer Z AS-Series Parts

Zero-Turn Mower - Models LAS28KA604, LZ25KC604AS
Caster Wheel



All original equipment manufacturers names and part numbers are used for identification purposes only, and we are in no way implying that our products are original equipment parts. Prices subject to change without notice.



Replaces Exmark Lazer Z AS-Series Parts

Zero-Turn Mower - Models LAS28KA604, LZ25KC604AS
Caster Wheel



| Item No | R&R Part No. | OEM Part No. | Description | Qty Req | Order Quantity |
|------------------------------|---------------------|--|---|---------|----------------|
| Tires | | | | | |
| 31 | R103-5189 | 103-3785, 103-5189 | Tire & Wheel - 13x5.00-6 Smooth Pneumatic 4 Ply | 2 | |
| 32 | RCT5120211 | 1-633002 | Tire - 13x5.00-6 Nhs (4 Ply) Carlisle Smooth | 2 | |
| 33 | RCT5121861 | 1-523009, 125-5581, 126-5959 | Tire - 13x6.50-6 Nhs (4 Ply) Carlisle Smooth | 2 | |
| Other Parts Available | | | | | |
| 71 | R116-8883 | 1-632511-01 | Caster Fork Assy Incl Seal 6.25 in Inside | 2 | |
| 71 | R1-632511-01 | 1-632511-01 | Caster Fork Assy Incl Seal 6.25 in Inside | 0 | |
| 71 | R116-8888 | 103-1474-01, 116--6707-01, 116-6707-01 | Fork - Caster 7.875 in Inside | 2 | |
| 72 | R1-543511 | 1-543511, R & R ONLY | Seal- Grease | 2 | |
| 72 | R116-5647 | 116-5647, R & R ONLY | Seal - Grease | 2 | |
| 73 | R254-94 | 1-543509 | Tapered Bearing Cone | 4 | |
| 74 | R254-72 | 1-543508 | Cup - Bearing | 4 | |
| 75 | R1-633508 | 1-633508 | Washer - Spring Disc | 6 | |
| 76 | R3296-51 | 3296-51 | Nut - Nylon Lock 3/4-10 Gr 8 | 2 | |
| 78 | R500596 | R & R ONLY | Tapered Bearing Set - Cup and Cone | 4 | |
| 88 | R103-4882 | 103-4882 | Grease Cap - Castor | 2 | |
| 91 | R325-37 | 325-36, 325-37 | Bolt - Hex Head 1/2-13 x 7 Grade 5 | 2 | |
| 91 | R325-39 | 325-39 | Bolt - Hx HD 1/2-13 x 9 1/2 | 2 | |

All original equipment manufacturers names and part numbers are used for identification purposes only, and we are in no way implying that our products are original equipment parts. Prices subject to change without notice.



Replaces Exmark Lazer Z AS-Series Parts

Zero-Turn Mower - Models LAS28KA604, LZ25KC604AS
Caster Wheel



| Item No | R&R Part No. | OEM Part No. | Description | Qty Req | Order Quantity |
|---|------------------|-------------------------|-------------------------|---------|----------------|
| 92 | R103-2768 | 103-2768 | Guard - Seal | 4 | |
| 93 | R103-3051 | 103-3051 | Spacer - Nut - Hardened | 4 | |
| 94 | R103-0063 | 103-0063 | Seal - Grease | 4 | |
| 95 | R254-78 | 1-633585 | Tapered Bearing Cone | 4 | |
| 96 | R103-3155 | 103-3155 | Axle - Caster | 2 | |
| 97 | RF5003 | 3296-23 | Locknut - ESNA 1/2-13 | 2 | |
| 98 | R254-79 | 1-633584, R & R ONLY | Cup - Bearing | 4 | |
| <i>Detail Description: Use R254-79M installation mandrel to properly install race.:</i> | | | | | |
| 102 | R500534 | 1-633585, R & R ONLY | Bearing - with Cup | 4 | |

Detail Description: Kit includes: 1 ea R254-78- Bearing Cone & R254-79 Bearing Cone:

All original equipment manufacturers names and part numbers are used for identification purposes only, and we are in no way implying that our products are original equipment parts. Prices subject to change without notice.