



## Replaces Exmark Lazer Z E-Series Parts

*Zero-Turn Mower with 60in Deck - Model LZE740EKC60400,  
LZE742GKC604A3, LZE742GKC604C1, LZE751CKA604A1,  
LZE751GKA604A1, LZE751GKA604C1, LZE801GKA604C1,  
LZE730GKA604A3, LZE730GKA604B3, LZE740EKC604A3  
Caster Wheel*

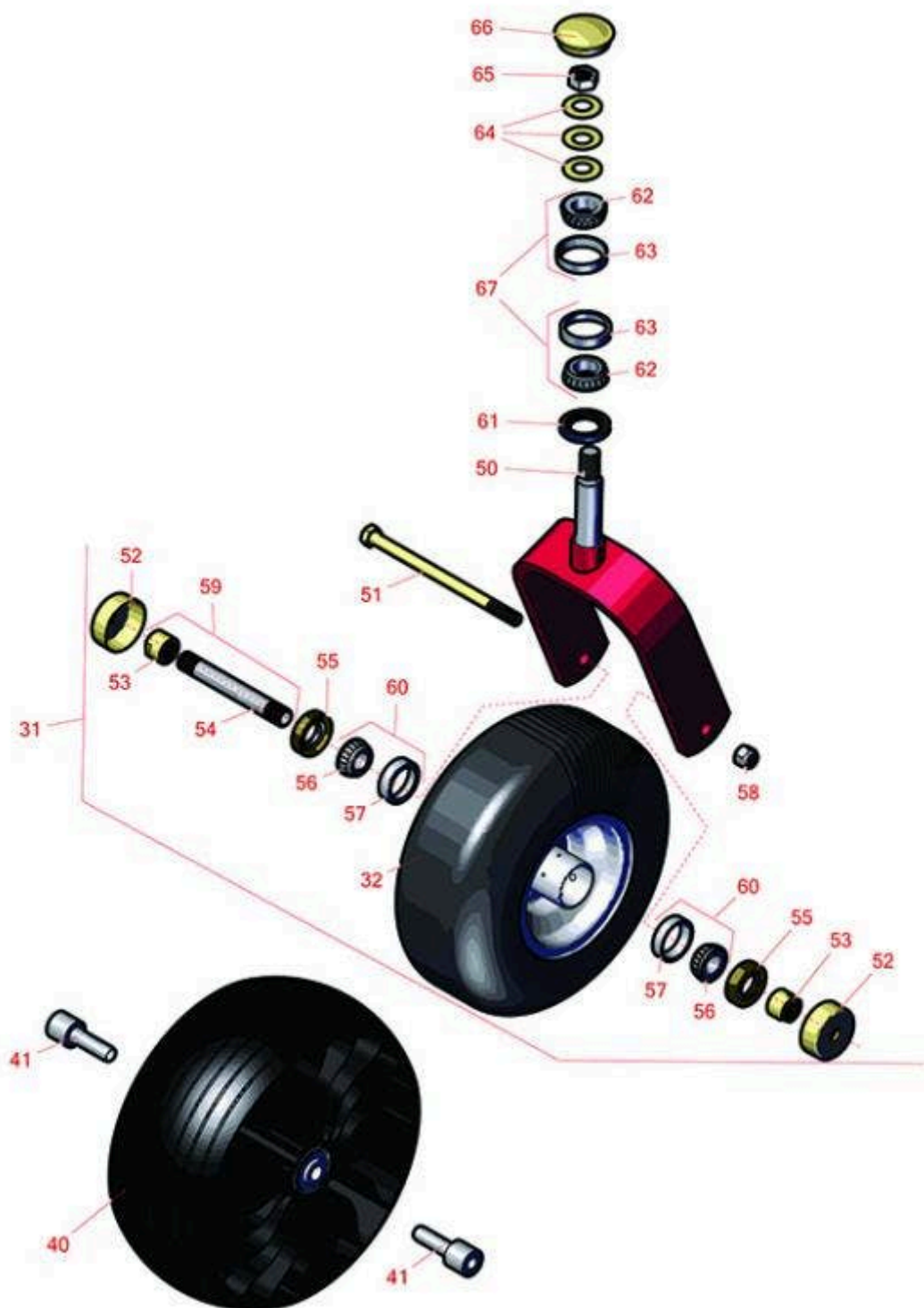
---





## Replaces Exmark Lazer Z E-Series Parts

Zero-Turn Mower with 60in Deck - Model LZE740EKC60400,  
LZE742GKC604A3, LZE742GKC604C1, LZE751CKA604A1,  
LZE751GKA604A1, LZE751GKA604C1, LZE801GKA604C1,  
LZE730GKA604A3, LZE730GKA604B3, LZE740EKC604A3  
Caster Wheel



All original equipment manufacturers names and part numbers are used for identification purposes only, and we are in no way implying that our products are original equipment parts. Prices subject to change without notice.



## Replaces Exmark Lazer Z E-Series Parts

Zero-Turn Mower with 60in Deck - Model LZE740EKC60400,  
LZE742GKC604A3, LZE742GKC604C1, LZE751CKA604A1,  
LZE751GKA604A1, LZE751GKA604C1, LZE801GKA604C1,  
LZE730GKA604A3, LZE730GKA604B3, LZE740EKC604A3  
Caster Wheel



Item No	R&R Part No.	OEM Part No.	Description	Qty Req	Order Quantity
---------	--------------	--------------	-------------	---------	----------------

### Tires & Wheels

0	TIRES		<a href="#">Click Here to View Complete Tire Selection</a>	0	
31	R109-9127	109-9127	Tire & Wheel - 13x6.50-6 Flat Free	2	
31	R109-9126	109-9126	Tire & Wheel - 13x5.00-6 - White	2	
31	R117-0361	117-0361	Tire & Wheel - 13x6.50-6 Pneumatic	2	
32	RCT5121861	1-523009, 125-5581, 126-5959	Tire - 13x6.50-6 Nhs (4 Ply) Carlisle Smooth	2	

### Optional Michelin Tweel Tires

40	RTMT73818	109-9127, 117-0361, 126-3289, 126-4860	Michelin X Tweel Turf Caster Grooved - 13x6.5N6 (5/8in Mount) 290 lb Max Load	2	
40	RTMT41011	109-9127, 117-0361, 126-3289, 126-4860	Michelin X Tweel Turf Caster Smooth - 13x6.5N6 (5/8in Mount) 290 lb Max Load	2	

*Detail Description: Michelin X Tweel Turf casters replace the existing front casters on zero turn radius mowers, and completely eliminate the risk of flat tires. They have a consistent hub height which helps ensure the mower deck produces an even cut, while the poly-resin spokes help dampen the ride for enhanced operator comfort, even when navigating over curbs and other bumps. They are designed to provide a long wear life.:*

*Detail Description: Michelin X Tweel Turf casters replace the existing front casters on zero turn radius mowers, and completely eliminate the risk of flat tires. They have a consistent hub height which helps ensure the mower deck produces an even cut, while the poly-resin spokes help dampen the ride for enhanced operator comfort, even when navigating over curbs and other bumps. They are designed to provide a long wear life.:*

All original equipment manufacturers names and part numbers are used for identification purposes only, and we are in no way implying that our products are original equipment parts. Prices subject to change without notice.



## Replaces Exmark Lazer Z E-Series Parts

Zero-Turn Mower with 60in Deck - Model LZE740EKC60400,  
LZE742GKC604A3, LZE742GKC604C1, LZE751CKA604A1,  
LZE751GKA604A1, LZE751GKA604C1, LZE801GKA604C1,  
LZE730GKA604A3, LZE730GKA604B3, LZE740EKC604A3  
Caster Wheel



Item No	R&R Part No.	OEM Part No.	Description	Qty Req	Order Quantity
41	RTMT40653		Michelin Spacer - 1/2in ID x 1in OD	4	

### Other parts

50	R116-6703-01	116-6703-01	Caster Fork	2	
----	--------------	-------------	-------------	---	--

*Tech Note: Only for LZE740EKC60400:*

50	R116-8888	103-1474-01, 116--6707-01, 116-6707-01	Fork - Caster 7.875 in Inside	2	
----	-----------	----------------------------------------------	-------------------------------	---	--

51	R325-42	325-42	Bolt - 1/2-13 x 8 Hex Head Gr 5	2	
----	---------	--------	---------------------------------	---	--

51	R325-39	325-39	Bolt - Hx HD 1/2-13 x 9 1/2	2	
----	---------	--------	-----------------------------	---	--

52	R103-2768	103-2768	Guard - Seal	4	
----	-----------	----------	--------------	---	--

53	R103-3051	103-3051	Spacer - Nut - Hardened	4	
----	-----------	----------	-------------------------	---	--

54	R103-5156	103-5156	Axle- Caster	2	
----	-----------	----------	--------------	---	--

54	R103-3155	103-3155	Axle - Caster	2	
----	-----------	----------	---------------	---	--

*Tech Note: Only for LZE740EKC60400:*

55	R103-0063	103-0063	Seal - Grease	4	
----	-----------	----------	---------------	---	--

56	R254-78	1-633585	Tapered Bearing Cone	4	
----	---------	----------	----------------------	---	--

57	R254-79	1-633584, R & R ONLY	Cup - Bearing	4	
----	---------	-------------------------	---------------	---	--

*Detail Description: Use R254-79M installation mandrel to properly install race.:*

58	RF5003	3296-23	Locknut - ESNA 1/2-13	2	
----	--------	---------	-----------------------	---	--

59	R126-5360	126-5360	Axle- Caster w/Spacer Nut	2	
----	-----------	----------	---------------------------	---	--

All original equipment manufacturers names and part numbers are used for identification purposes only, and we are in no way implying that our products are original equipment parts. Prices subject to change without notice.



## Replaces Exmark Lazer Z E-Series Parts

Zero-Turn Mower with 60in Deck - Model LZE740EKC60400,  
LZE742GKC604A3, LZE742GKC604C1, LZE751CKA604A1,  
LZE751GKA604A1, LZE751GKA604C1, LZE801GKA604C1,  
LZE730GKA604A3, LZE730GKA604B3, LZE740EKC604A3  
Caster Wheel



Item No	R&R Part No.	OEM Part No.	Description	Qty Req	Order Quantity
<i>Tech Note: Only for LZE740EKC60400:</i>					
59	<b>R126-5361</b>	126-5361	Axle Assy - with Bushing - Caster	2	
60	<b>R500534</b>	1-633585, R & R ONLY	Bearing - with Cup	4	
<i>Detail Description: Kit includes: 1 ea R254-78- Bearing Cone &amp; R254-79 Bearing Cone:</i>					
61	<b>R116-5647</b>	116-5647, R & R ONLY	Seal - Grease	2	
62	<b>R254-94</b>	1-543509	Tapered Bearing Cone	4	
63	<b>R254-72</b>	1-543508	Cup - Bearing	4	
64	<b>R1-633508</b>	1-633508	Washer - Spring Disc	6	
65	<b>R3296-51</b>	3296-51	Nut - Nylon Lock 3/4-10 Gr 8	2	
66	<b>R103-4882</b>	103-4882	Grease Cap - Castor	2	
67	<b>R500596</b>	R & R ONLY	Tapered Bearing Set - Cup and Cone	4	

All original equipment manufacturers names and part numbers are used for identification purposes only, and we are in no way implying that our products are original equipment parts. Prices subject to change without notice.