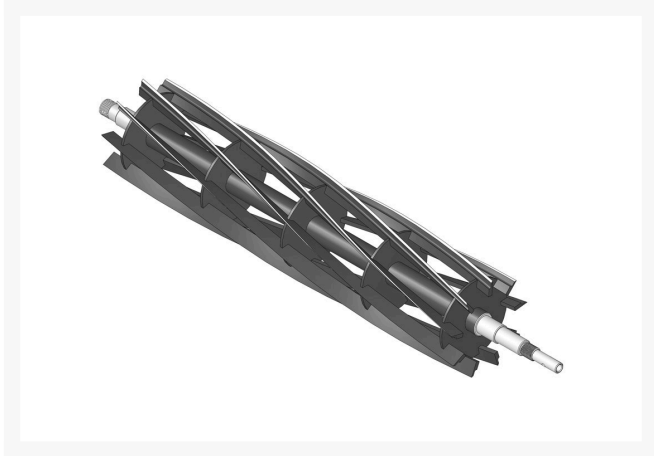




## Reel - 9 Blade RH

R502766



### Details

R&R Reel blades are expertly crafted from premium high carbon-boron alloy steel, heat-treated to perfectly complement both R&R and OEM bedknives. Each reel undergoes precision cylindrical grinding on bearing surfaces, followed by relief grinding for optimal performance. Advanced computer balancing ensures extended reel and bearing life. Backed by our lifetime guarantee against defects in materials and craftsmanship under normal use, R&R Reels deliver unmatched durability and cutting precision you can trust.

- **Premium Construction:** Made from high carbon-boron alloy steel and heat-treated to match R&R and OEM bedknives for superior performance.
- **Precision Engineering:** Cylindrically and relief ground, then computer balanced to maximize reel and bearing life.
- **Lifetime Guarantee:** Backed by a lifetime warranty against material and workmanship defects under normal use.

### Replaces

Jacobsen	502766
R&R Products	R121518

### Specifications

Manufacturer	R&R Products
--------------	--------------

### Fits Models

## Japan Equipment

123 Main St. Apartment 12 Tokyo, 100-0001  
987-456-3210

<https://japan.rrproducts.com/>



## Reel - 9 Blade RH

R502766



Jacobsen Greens King II

### Japan Equipment

123 Main St. Apartment 12 Tokyo, 100-0001  
987-456-3210

<https://japan.rrproducts.com/>