

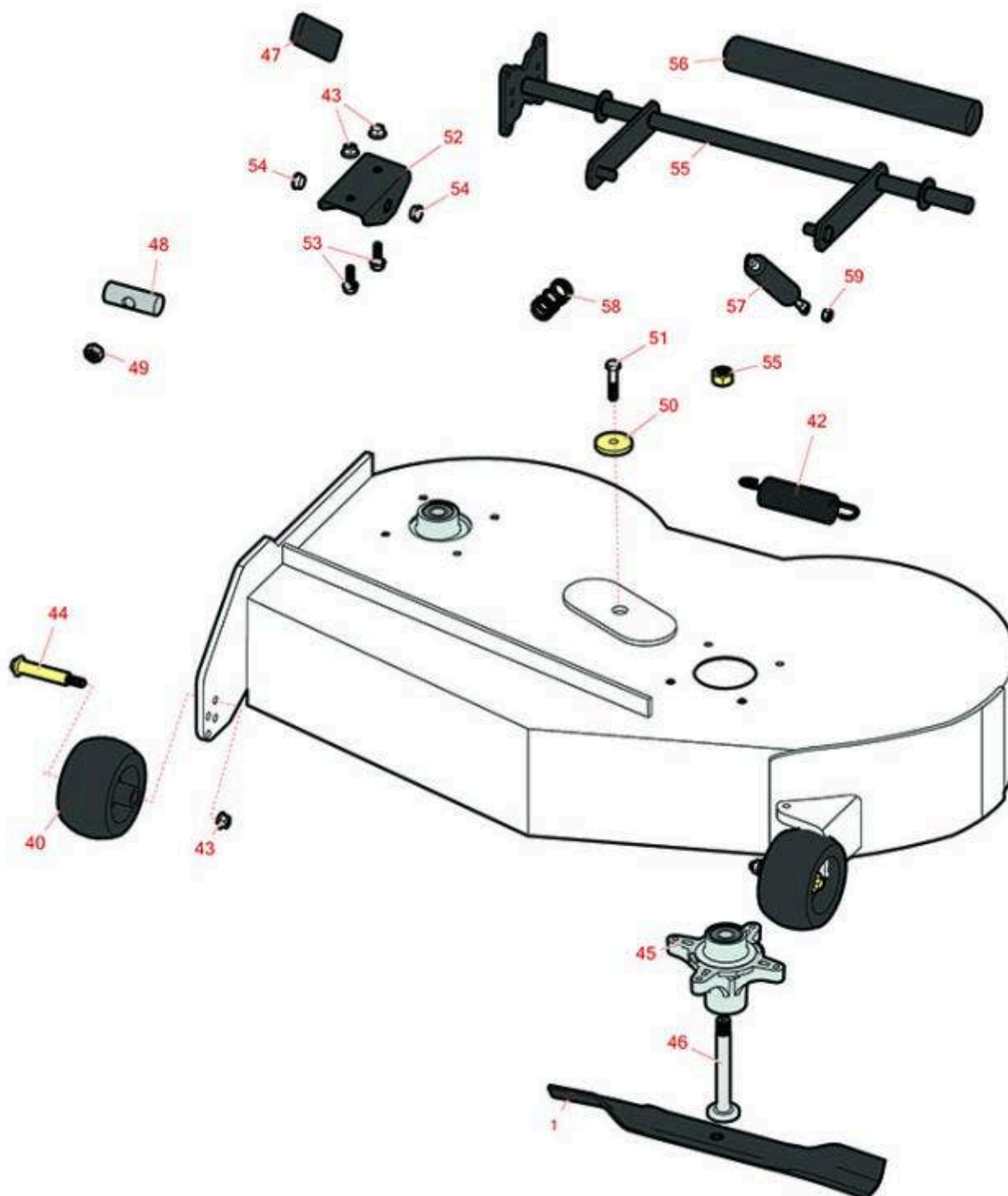


# Replaces Exmark Quest Drive Series

## Parts

34in Rotary Mower

34in Deck parts



All original equipment manufacturers names and part numbers are used for identification purposes only, and we are in no way implying that our products are original equipment parts. Prices subject to change without notice.



# Replaces Exmark Quest Drive Series Parts

34in Rotary Mower  
34in Deck parts



Item No	R&R Part No.	OEM Part No.	Description	Qty Req	Order Quantity
---------	--------------	--------------	-------------	---------	----------------

## Blades

1	<b>R115-5059-03</b>	115-5059-03	Mower Blade - High Lift 17.5 in	2	
---	---------------------	-------------	---------------------------------	---	--

## Other Parts Available

40	<b>R68-2730</b>	1-603299	Wheel - Anti Scalp	2	
42	<b>R106-2177</b>	106-2177	Spring - Extension	1	
43	<b>R104-8301</b>	104-8301, 109-6658	Locknut - 3/8-16 Nylon Flanged	8	
44	<b>R112-3977</b>	112-3977	Bolt- Shoulder	2	
45	<b>R139-3214</b>	121-0751, 121-9107	Spindle Assy	2	
46	<b>R117-7268</b>	117-7268	Shaft- Spindle	2	
47	<b>R1-633268</b>	1-633268	Grip - Lever - Foam	1	
48	<b>R119-8810</b>	119-8810	Pivot Pin	1	
49	<b>R3296-19</b>	3296-19	Locknut - 1/2-20	1	
50	<b>R110-9981</b>	110-9981	Washer-Plain	1	
51	<b>R323-9</b>	323-9	Bolt - Hex HD 3/8-16 x 1-3/4	2	
52	<b>R120-2294-03</b>	120-2294-03	Bracket-Footlift	1	

*Tech Note: Only for Model QTS452CEM34200:*

53	<b>R3234-42</b>	3234-42	Bolt - 3/8-16 x 1 Hx HD Fl	2	
54	<b>R256-156</b>	256-156	Bushing - Flanged	2	
55	<b>R132-6872-03</b>	132-6872-03	Lift - Deck - Narrow	1	
56	<b>R121-0726</b>	121-0726	Grip - Foam	2	
57	<b>R131-0964</b>	131-0964	Damper	2	

All original equipment manufacturers names and part numbers are used for identification purposes only, and we are in no way implying that our products are original equipment parts. Prices subject to change without notice.



# Replaces Exmark Quest Drive Series Parts

34in Rotary Mower  
34in Deck parts



Item No	R&R Part No.	OEM Part No.	Description	Qty Req	Order Quantity
<i>Tech Note: Only for Model QTS452CEM34200:</i>					
58	<b>R119-8876</b>	119-8876	Spring - Return	2	
59	<b>R301504</b>	3296-42	Locknut - ESNA 1/4-20	4	

All original equipment manufacturers names and part numbers are used for identification purposes only, and we are in no way implying that our products are original equipment parts. Prices subject to change without notice.