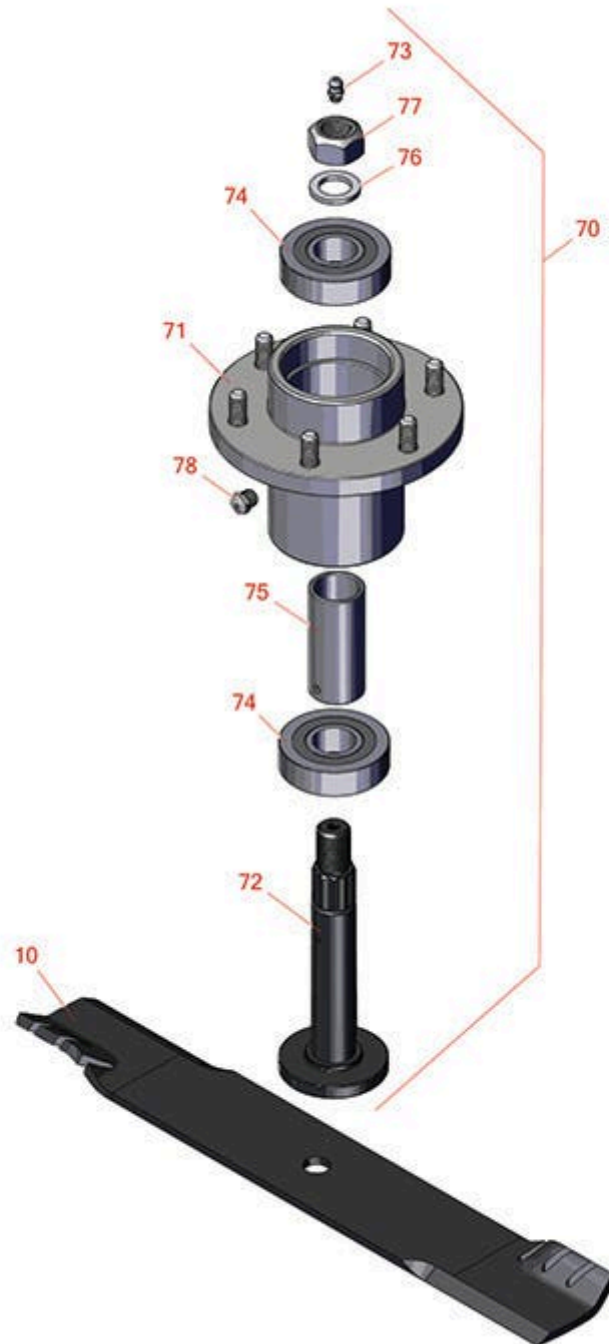




Replaces John Deere WHP52A Commercial Walk-Behind Mower Parts

Rotary Mower
52in Deck Parts



All original equipment manufacturers names and part numbers are used for identification purposes only, and we are in no way implying that our products are original equipment parts. Prices subject to change without notice.



Replaces John Deere WHP52A Commercial Walk-Behind Mower Parts

Rotary Mower
52in Deck Parts



Item No	R&R Part No.	OEM Part No.	Description	Qty Req	Order Quantity
---------	--------------	--------------	-------------	---------	----------------

Rotary Blades

10	RTC29188	TCU29188	Mower Blade - 18 in Mulcher	3	
----	-----------------	----------	-----------------------------	---	--

Detail Description: The G3 Gator blade is the best option for those looking for a replacement blade with better mulching capabilities. Designed with progressive geometry on the cutting edge for a cleaner cut and an aggressive blade angle to increase air flow for superior bagging or side discharge, Gator G3 blades help you get that professional looking cut with any mower.:

Other Parts Available

70	RTCA20480	TCA20480	Spindle Assy	3	
----	------------------	----------	--------------	---	--

71	RTCA20479	TCA20479	Spindle Housing	3	
----	------------------	----------	-----------------	---	--

72	RTC29122	TCU29122	Shaft Spindle	3	
----	-----------------	----------	---------------	---	--

73	R302-5	JD7797, JD7842, JD7844	Fitting - Grease	3	
----	---------------	------------------------------	------------------	---	--

74	RJD9467	JD9467	Bearing	6	
----	----------------	--------	---------	---	--

75	RTC29463	TCU29463	Spacer	3	
----	-----------------	----------	--------	---	--

76	RM82056	M82056	Washer - 19.050 x 28.575 x 3.038 mm	3	
----	----------------	--------	-------------------------------------	---	--

77	RD24008	D24008	Nut - 3/4-16 Top Lock All Metal	3	
----	----------------	--------	---------------------------------	---	--

78	R170714	E14814	Fitting - Pressure Relief	3	
----	----------------	--------	---------------------------	---	--

All original equipment manufacturers names and part numbers are used for identification purposes only, and we are in no way implying that our products are original equipment parts. Prices subject to change without notice.