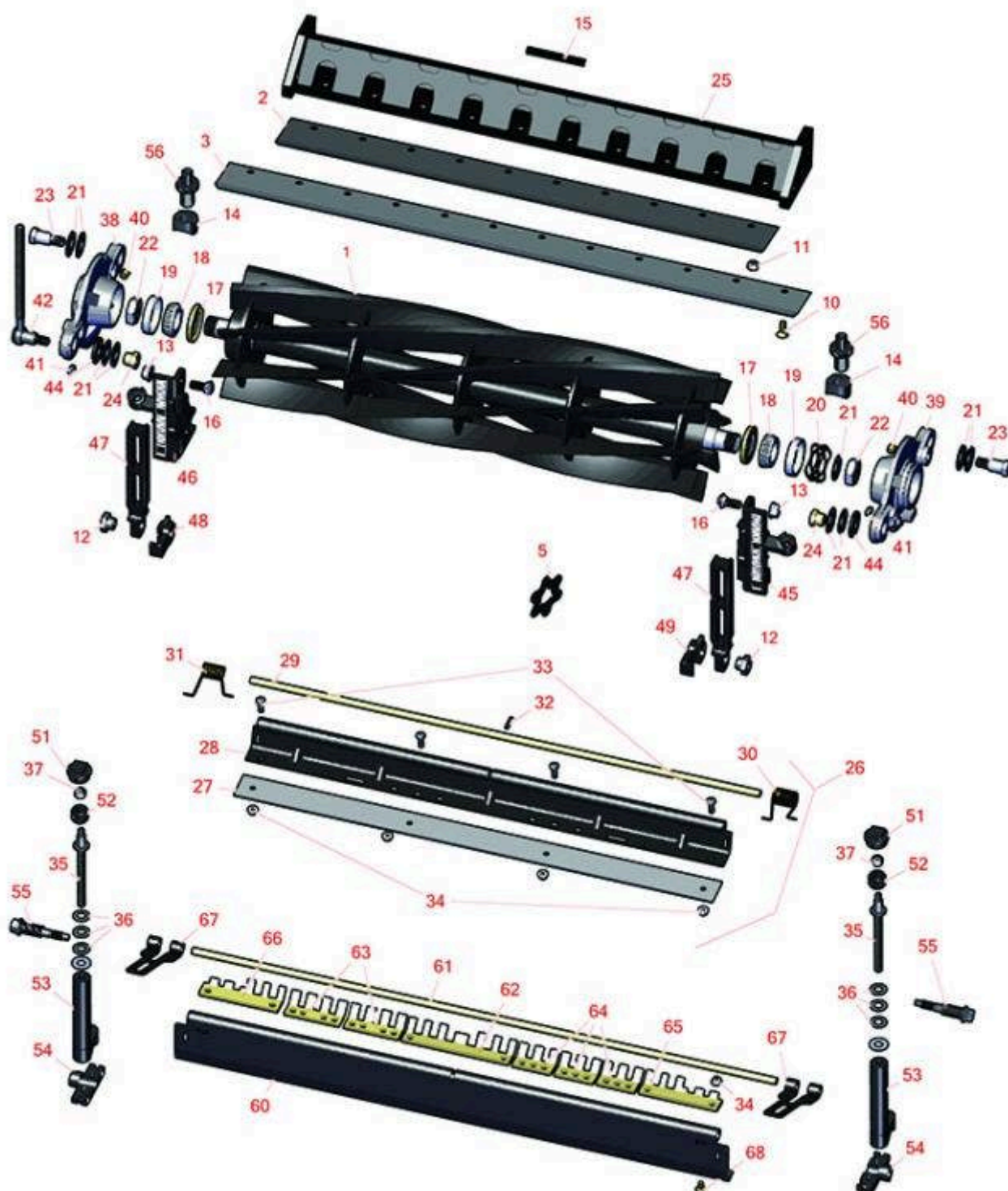




Replaces John Deere 8900A Reel Mower Parts

26in Cutting Unit
Reel & Bedknife



All original equipment manufacturers names and part numbers are used for identification purposes only, and we are in no way implying that our products are original equipment parts. Prices subject to change without notice.



Replaces John Deere 8900A Reel Mower Parts

26in Cutting Unit
Reel & Bedknife



Item No	R&R Part No.	OEM Part No.	Description	Qty Req	Order Quantity
---------	--------------	--------------	-------------	---------	----------------

R&R Reels, Lifetime Guranteed

1	RTCA19355	TCA19355	Reel - 5 Blade 26 in	1
---	------------------	----------	----------------------	---

Detail Description: R&R Reel blades are expertly crafted from premium high carbon-boron alloy steel, heat-treated to perfectly complement both R&R and OEM bedknives. Each reel undergoes precision cylindrical grinding on bearing surfaces, followed by relief grinding for optimal performance. Advanced computer balancing ensures extended reel and bearing life. Backed by our lifetime guarantee against defects in materials and craftsmanship under normal use, R&R Reels deliver unmatched durability and cutting precision you can trust.:

1	RTCA19356	TCA19356	Reel - 8 Blade 26 in	1
---	------------------	----------	----------------------	---

Detail Description: R&R Reel blades are expertly crafted from premium high carbon-boron alloy steel, heat-treated to perfectly complement both R&R and OEM bedknives. Each reel undergoes precision cylindrical grinding on bearing surfaces, followed by relief grinding for optimal performance. Advanced computer balancing ensures extended reel and bearing life. Backed by our lifetime guarantee against defects in materials and craftsmanship under normal use, R&R Reels deliver unmatched durability and cutting precision you can trust.:

1	RTCA19357	TCA19357	Reel - 5 Blade 30 in	1
---	------------------	----------	----------------------	---

Detail Description: R&R Reel blades are expertly crafted from premium high carbon-boron alloy steel, heat-treated to perfectly complement both R&R and OEM bedknives. Each reel undergoes precision cylindrical grinding on bearing surfaces, followed by relief grinding for optimal performance. Advanced computer balancing ensures extended reel and bearing life. Backed by our lifetime guarantee against defects in materials and craftsmanship under normal use, R&R Reels deliver unmatched durability and cutting precision you can trust.:

1	RTCA19358	TCA19358	Reel - 8 Blade 30 in	1
---	------------------	----------	----------------------	---

Detail Description: R&R Reel blades are expertly crafted from premium high carbon-boron alloy steel, heat-treated to perfectly complement both R&R and OEM bedknives. Each reel undergoes precision cylindrical grinding on bearing surfaces, followed by relief grinding for optimal performance. Advanced computer balancing ensures extended reel and bearing life. Backed by our lifetime guarantee against defects in materials and craftsmanship under normal use, R&R Reels deliver unmatched durability and cutting precision you can trust.:

R&R Bedknives, Lifetime Guranteed

2	RET17752	ET17752	Bedknife - 26 in 10 Hole	1
---	-----------------	---------	--------------------------	---

All original equipment manufacturers names and part numbers are used for identification purposes only, and we are in no way implying that our products are original equipment parts. Prices subject to change without notice.



Replaces John Deere 8900A Reel Mower Parts

26in Cutting Unit
Reel & Bedknife



Item No	R&R Part No.	OEM Part No.	Description	Qty Req	Order Quantity
---------	--------------	--------------	-------------	---------	----------------

Detail Description: R&R Bedknives are manufactured from high carbon-boron alloy steel and then hardened to RC46-49 to match the temper of our reel blades and original equipment reels. Bedknives are surface ground on the top and front edge and straightened three times before being packaged with oil for rust prevention. All R&R Bedknives now have an increased front edge grind for added life. All R&R Bedknives are guaranteed against defects in material and workmanship under normal use for the life of the part.:

2	RMT2396	MT2396, MT6949	Bedknife - 26 in Low Cut 10 Hole	1	
---	----------------	-------------------	----------------------------------	---	--

Detail Description: R&R Bedknives are manufactured from high carbon-boron alloy steel and then hardened to RC46-49 to match the temper of our reel blades and original equipment reels. Bedknives are surface ground on the top and front edge and straightened three times before being packaged with oil for rust prevention. All R&R Bedknives now have an increased front edge grind for added life. All R&R Bedknives are guaranteed against defects in material and workmanship under normal use for the life of the part.:

3	RMT1973	MT1973	Bedknife - 30 in 12 Hole	1	
---	----------------	--------	--------------------------	---	--

Detail Description: R&R Bedknives are manufactured from high carbon-boron alloy steel and then hardened to RC46-49 to match the temper of our reel blades and original equipment reels. Bedknives are surface ground on the top and front edge and straightened three times before being packaged with oil for rust prevention. All R&R Bedknives now have an increased front edge grind for added life. All R&R Bedknives are guaranteed against defects in material and workmanship under normal use for the life of the part.:

Blades

5	RMT2624	MT2624	Knife - Greens Conditioner	46	
---	----------------	--------	----------------------------	----	--

Other Parts Available

10	R19M7573	19M7573	Screw - Bedknife M8-1.25 x 20	12	
----	-----------------	---------	-------------------------------	----	--

11	RH137328	H137328	Locknut	12	
----	-----------------	---------	---------	----	--

12	RTC28635	TCU24555, TCU28635	Eccentric	2	
----	-----------------	-----------------------	-----------	---	--

13	RH135891	H135891	Locknut - 10mm x 1.5 Flanged 10.9	6	
----	-----------------	---------	-----------------------------------	---	--

Detail Description: High Strength:

All original equipment manufacturers names and part numbers are used for identification purposes only, and we are in no way implying that our products are original equipment parts. Prices subject to change without notice.



Replaces John Deere 8900A Reel Mower Parts

26in Cutting Unit
Reel & Bedknife



Item No	R&R Part No.	OEM Part No.	Description	Qty Req	Order Quantity
14	RTCU25394	TCU25394, TCU27453	Base	2	
15	RTCU25398	TCU25398	Compression Spring	1	
17	RTCU25266	TCU25266	Seal	2	
16	R03M7191	03M7191	Bolt - Carriage M10 x 25	2	
18	R254-94	JD8933, TCU37582	Tapered Bearing Cone	2	
19	R254-72	JD8253	Cup - Bearing	2	
20	R170610	TCU26530	Spring - Compression	1	
21	RET16678	ET16678	Washer - Spring	1	
22	RTCU26215	TCU26215	Nut - Reel	2	
23	RMT6338	MT6338	Bolt - Shoulder	2	
24	RET16572	ET16572	Nut - Hex	2	
25	RAET11303	AET11303	Backing Bar - 26 Bedknife	1	
26	RMT2368	MT2368	Scraper - Assy 26 Solid Roller	1	
<i>Detail Description: Includes: RET17630, RET17629, RET17758, R34M7010 RMT2594 R14M7303 & R21M7246:</i>					
27	RMT2594	MT2594	Blade - 26 Scraper	1	
27	RMT2593	MT2593	Blade - 30 Scraper	1	
28	R500565	MT2368	Bar - Scraper 26	1	
29	RET17758	ET17758	Pin - 26 Scrapers	1	
30	RET17629	ET17629	Spring - Torsion LH	1	
31	RET17630	ET17630	Spring - Torsion RH	1	

All original equipment manufacturers names and part numbers are used for identification purposes only, and we are in no way implying that our products are original equipment parts. Prices subject to change without notice.



Replaces John Deere 8900A Reel Mower Parts

26in Cutting Unit
Reel & Bedknife



Item No	R&R Part No.	OEM Part No.	Description	Qty Req	Order Quantity
32	R34M7010	34M7010	Pin - Spring	1	
33	R21M7246	21M7246	Screw	4	
34	R14M7303	14M7303	Nut - 6mm x 1.0 Flanged	4	
35	RTC26123	TCU26123	Adjuster	2	
36	RET16679	ET16679	Washer - Spring	6	
37	RM148268	M148268	Lock Nut	2	
38	RUC13941	UC13941	Housing - w/o Bearing - RH	1	
39	RUC13937	UC13937	Housing - w/o Bearing - LH	1	
40	R170714	E14814	Fitting - Pressure Relief	2	
41	R302-5	JD7797, JD7842, JD7844	Fitting - Grease	2	
42	RTC25317	TCU25317	Adjuster	2	
44	RTC25260	TCU25260	Washer	2	
45	RUC16138	UC16138	Bracket - Front LH	1	
46	RUC16139	UC16139	Bracket - Front RH	1	
47	RUC22790	UC22790	Bracket - Front Roller	2	
48	RUC16109	TCU24461, UC16109	Bracket - RH	1	
49	RUC18211	TCU24461, UC18211	Bracket - LH	1	
51	RUC16102	TCU24949, UC16102	Cap	2	
52	RTC40491	TCU24683, TCU40491	Worm Gear	2	

All original equipment manufacturers names and part numbers are used for identification purposes only, and we are in no way implying that our products are original equipment parts. Prices subject to change without notice.



Replaces John Deere 8900A Reel Mower Parts

*26in Cutting Unit
Reel & Bedknife*



Item No	R&R Part No.	OEM Part No.	Description	Qty Req	Order Quantity
53	RAUC13597	AUC13597	Adjuster	2	
54	RUC22218	UC22218	Half Clamp	2	
55	RTC26458	TCU26458	Worm Gear	2	
56	RUC16137	TCU24955, UC16137	Adjuster	2	
60	RTC27070	TCU27070	Scraper	1	
61	RMT1982	MT1982	Pin - 30 Scrapers	1	
62	RMT2340	MT2340	Scraper - Fits J.D. Center	1	
63	RMT2341	MT2341	Section - Grooved Scraper 4 Tooth	2	
64	RMT2342	MT2342	Section - Grooved Scraper 3 Tooth	3	
65	RMT5158	MT5158	Scraper - Fits J.D. RH End	1	
66	RMT5159	MT5159	Scraper - Fits J.D. LH End	1	
67	RTC26998	TCU26998	Panel	2	
68	R03M7251	03M7251	Bolt - Gr. Roller Scraper	16	

All original equipment manufacturers names and part numbers are used for identification purposes only, and we are in no way implying that our products are original equipment parts. Prices subject to change without notice.