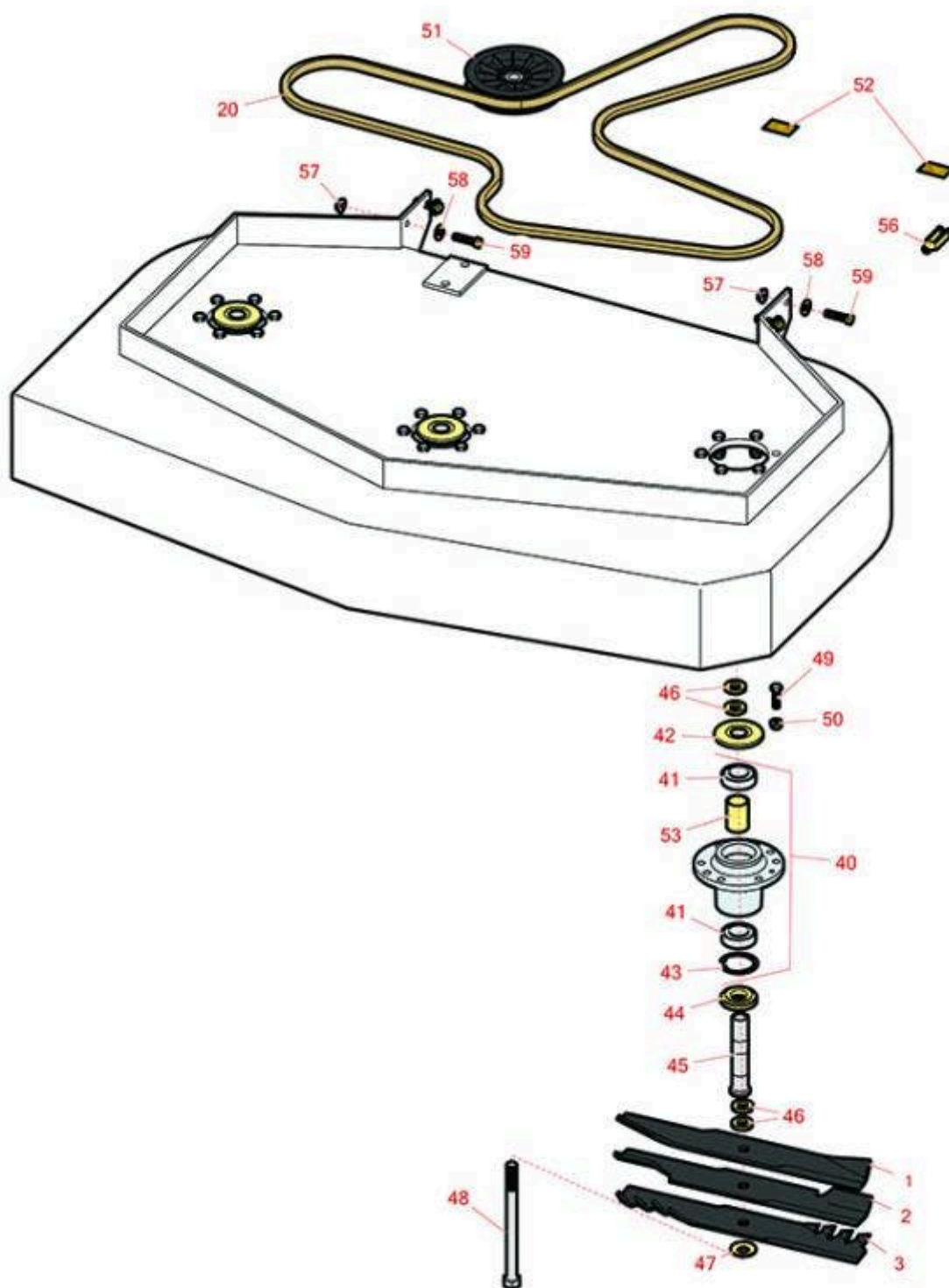


Replaces Exmark Metro Parts

Walk Behind Mower - Model MGS481CKA48300 with 48in Deck
48in Deck



All original equipment manufacturers names and part numbers are used for identification purposes only, and we are in no way implying that our products are original equipment parts. Prices subject to change without notice.



Replaces Exmark Metro Parts

Walk Behind Mower - Model MGS481CKA48300 with 48in Deck
48in Deck



Item No	R&R Part No.	OEM Part No.	Description	Qty Req	Order Quantity
---------	--------------	--------------	-------------	---------	----------------

Rotary Blades

1	R103-6581	103-6581	Mower Blade - 16-1/4 Mulch	3	
2	RRB3062-1600	103-6583, 103-6583-S	Mower Blade - High-Lift 16.25 x 2.5in x 5/8 Mt Hole	3	

Detail Description: R&R Products rotary blades are manufactured in the USA with superior alloy steel and hardened for extended life. Lifetime guaranteed against defects in material and workmanship.:

3	RRB4062-1600	116-5178	Mower Blade - Mulcher 16.25 x 2.5in x 5/8 Mt Hole	3	
20	R1-403174	1-403174	Drive Belt - Main Deck 48"	1	

Other Parts Available

40	R103-8280	103-8280	Spindle Assy w/Bearings	3	
41	R103-2477	103-2477	Bearing - Jackshaft	6	
42	R103-1330	103-1330	Guard - Bearing - Top	3	
43	RC-10025	32120-8	Ring - Retaining	3	
44	R103-2535	103-2535	Spacer-Guard, Bottom	3	
45	R1-323529	1-323529	Tube - Spindle - Short	3	
46	R1-323539	1-323539	Spacer	12	
47	R1-513208	1-513208	Washer - Spring	3	
48	R1-800861	1-800861	Bolt - 5/8-18x8 Hex Hx GR5	3	
49	R400264	323-29, 323-7	Bolt - Hex HD 3/8-16 x 1-1/4	18	
50	R3296-39	3296-39	Locknut - 3/8-16 Nylon	18	
51	R109-0977	109-0977	Idler Pulley - 5 in	2	
52	R106-5517	106-5517	Decal - Warning Hot Surface	2	

All original equipment manufacturers names and part numbers are used for identification purposes only, and we are in no way implying that our products are original equipment parts. Prices subject to change without notice.



Replaces Exmark Metro Parts

Walk Behind Mower - Model MGS481CKA48300 with 48in
Deck
48in Deck



Item No	R&R Part No.	OEM Part No.	Description	Qty Req	Order Quantity
53	R103-2534	103-2534	Spacer - Bearing	3	
56	R282-2	1-303105	Yoke	1	
57	R32128-43	32128-43, 3290-357	Nut - Flanged Whiz - 3/8-16	8	
58	R98-5975	98-5975	Washer - Belleville	9	
59	R323-8	323-8	Bolt - Hex HD 3/8-16 x 1-1/2 GR8	8	

All original equipment manufacturers names and part numbers are used for identification purposes only, and we are in no way implying that our products are original equipment parts. Prices subject to change without notice.