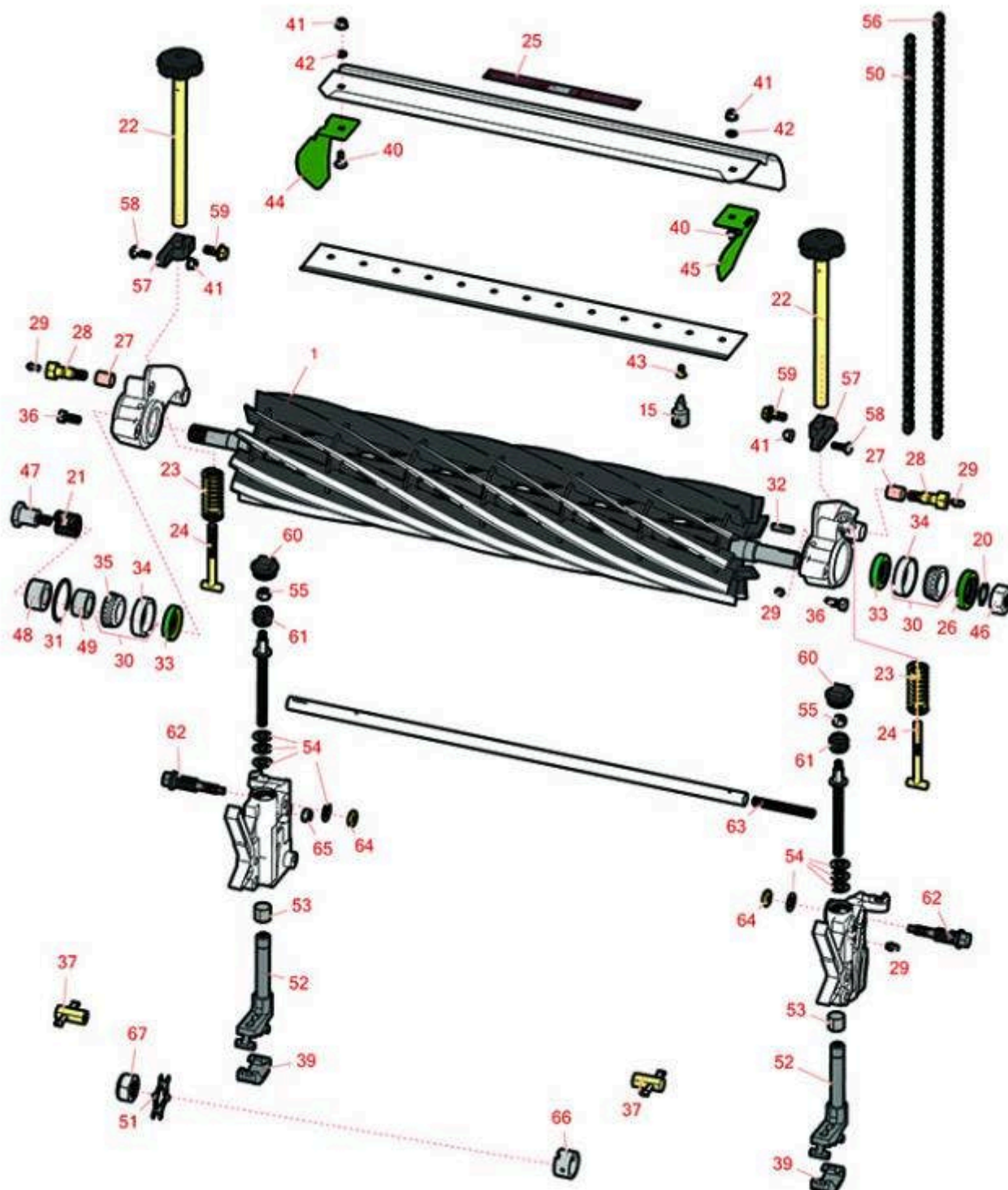




Replaces John Deere 260SL Walk-Behind Greens Mower Parts

Cutting Unit
Reel & Bedknife



All original equipment manufacturers names and part numbers are used for identification purposes only, and we are in no way implying that our products are original equipment parts. Prices subject to change without notice.



Replaces John Deere 260SL Walk-Behind Greens Mower Parts

Cutting Unit
Reel & Bedknife



Item No	R&R Part No.	OEM Part No.	Description	Qty Req	Order Quantity
---------	--------------	--------------	-------------	---------	----------------

R&R Reels, Lifetime Guaranteed

1	RAMT2903	AMT2903	Reel - 7 Blade 26in	1
---	-----------------	---------	---------------------	---

Detail Description: R&R Reel blades are expertly crafted from premium high carbon-boron alloy steel, heat-treated to perfectly complement both R&R and OEM bedknives. Each reel undergoes precision cylindrical grinding on bearing surfaces, followed by relief grinding for optimal performance. Advanced computer balancing ensures extended reel and bearing life. Backed by our lifetime guarantee against defects in materials and craftsmanship under normal use, R&R Reels deliver unmatched durability and cutting precision you can trust.:

1	RAMT2898	AMT2716, AMT2898	Reel - 11 Blade 26in	1
---	-----------------	---------------------	----------------------	---

Detail Description: R&R Reel blades are expertly crafted from premium high carbon-boron alloy steel, heat-treated to perfectly complement both R&R and OEM bedknives. Each reel undergoes precision cylindrical grinding on bearing surfaces, followed by relief grinding for optimal performance. Advanced computer balancing ensures extended reel and bearing life. Backed by our lifetime guarantee against defects in materials and craftsmanship under normal use, R&R Reels deliver unmatched durability and cutting precision you can trust.:

Service Tools

15	R101278T		Bedknife Screw Driver Tool	0
----	-----------------	--	----------------------------	---

Tech Note: Easily install and remove bed knife screws with the help of a ratchet. Tool manufactured with hardened alloy steel.:

Detail Description: Easily install and remove bed knife screws with the help of a ratchet. Tool manufactured with hardened alloy steel.:

Other Parts Available

20	R40M7080	40M7080, ET11059	Ring - Snap	1
----	-----------------	---------------------	-------------	---

21	RET11053	ET11053	Spring - Reel	1
----	-----------------	---------	---------------	---

22	RAMT2798	AMT2798	Handle - Adjuster	2
----	-----------------	---------	-------------------	---

23	RET11070	ET11070	Spring - Bed Bar	2
----	-----------------	---------	------------------	---

24	RET11372	ET11372	Bolt - Adjusting Bed Bar	2
----	-----------------	---------	--------------------------	---

All original equipment manufacturers names and part numbers are used for identification purposes only, and we are in no way implying that our products are original equipment parts. Prices subject to change without notice.



Replaces John Deere 260SL Walk-Behind Greens Mower Parts

Cutting Unit
Reel & Bedknife



Item No	R&R Part No.	OEM Part No.	Description	Qty Req	Order Quantity
25	RMT6517	MT6517	Label - Warning	1	
26	RET11073	ET11073	Seal - Reel Outer	1	
27	RP44946	P44946	Bushing - Bronze	2	
28	RET11371	ET11371	Screw - Special	2	
29	R302-5	JD7797, JD7842, JD7844	Fitting - Grease	6	
30	R500610	AMT1108	Tapered Bearing Set - Cup and Cone	2	
<i>Detail Description: Includes:RAMT1108 & RMT2108:</i>					
31	RM44162	M44162	O-Ring - Reel	1	
32	R49M7049	49M7049	Key - 5mm x 22mm	1	
33	RMT1160	MT1160	Seal - Reel	2	
34	RMT2108	MT2108	Tapered Bearing Cup	2	
35	RAMT1108	AMT1108	Tapered Bearing Cone	2	
36	R19M7881	19M7881	Bolt - Hex HD M8-1.25 x 20	2	
37	RET11356	ET11356	Nut - Adjusting	2	
39	RUC16110	UC16110	Clamp	2	
40	R03M7221	03M7221	Bolt - Carriage M6 x 16	8	
41	R14M7397	14M7397, 14M7463	Locknut - 6mm x 1.0 ESNA Flanged	4	
42	R24M7139	24M7139	Washer - Flat 6mm	2	
43	R101278	21M7194	Screw - Bedknife	13	
44	RTC29522	TCU29522	Grass Deflector	1	

All original equipment manufacturers names and part numbers are used for identification purposes only, and we are in no way implying that our products are original equipment parts. Prices subject to change without notice.



Replaces John Deere 260SL Walk-Behind Greens Mower Parts

*Cutting Unit
Reel & Bedknife*



Item No	R&R Part No.	OEM Part No.	Description	Qty Req	Order Quantity
45	RTCU29523	TCU29523	Grass Deflector	1	
46	R14M7306	14M7306	Nut - M20-1.5	1	
47	RET11367	ET11367	Cap Screw - Special	1	
48	RET11464	ET11464	Spacer	1	
49	RET11368	ET11368	Spacer	1	
50	RTCA16596	TCA16596	Roller Chain #35	1	
51	RET14707	ET14707	Verti-Cut Blade - .025 x 2.375	75	
52	RAUC13515	AUC13515	Adjuster	2	
53	RMT74	MT74	Bushing - Roller Bkt	2	
54	RET16679	ET16679	Washer - Spring	8	
55	RM148268	M148268	Lock Nut	2	
56	RTCA16595	TCA16595	Chain - Rear Roller	1	
57	RUC16469	MT6952, UC16469	Clamp	2	
58	R03M7222	03M7222	Bolt - Carriage M6-1.0 x 20	2	
59	R19M7866	19M7866	Bolt - Flanged Hex M8-1.25 x 20	2	
60	RUC16102	TCU24949, UC16102	Cap	2	
61	RTCU40491	TCU24683, TCU40491	Worm Gear	2	
62	RTCU26458	TCU26458	Worm Gear	2	
63	RTCU25398	TCU25398	Compression Spring	1	
64	R14M7152	14M7152	Nut - 10mm x 1.5 Jam	2	

All original equipment manufacturers names and part numbers are used for identification purposes only, and we are in no way implying that our products are original equipment parts. Prices subject to change without notice.



Replaces John Deere 260SL Walk-Behind Greens Mower Parts

*Cutting Unit
Reel & Bedknife*



Item No	R&R Part No.	OEM Part No.	Description	Qty Req	Order Quantity
65	RH137328	H137328	Locknut	2	
66	RET14917	ET14917	Spacer	1	
67	RN198341	N198341	Nut - Nyloc 7/8-14	1	

All original equipment manufacturers names and part numbers are used for identification purposes only, and we are in no way implying that our products are original equipment parts. Prices subject to change without notice.