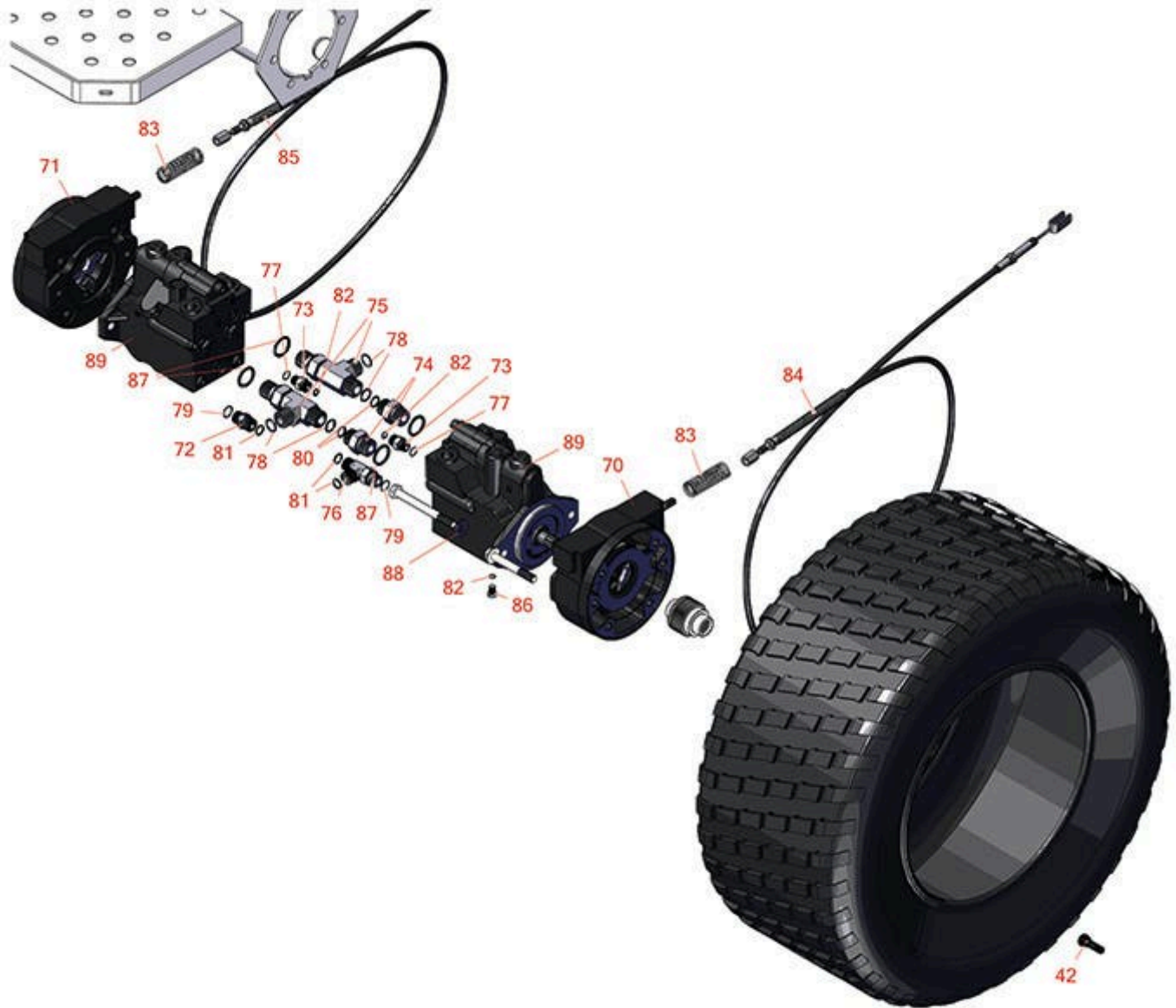




# Replaces Toro Groundsmaster 4700-D

## Parts

*Traction Unit - Model 30874*  
*Brakes*



FOR MORE TIRE SELECTIONS PLEASE  
CLICK ON THE TIRE ICON ABOVE.

All original equipment manufacturers names and part numbers are used for identification purposes only, and we are in no way implying that our products are original equipment parts. Prices subject to change without notice.



# Replaces Toro Groundsmaster 4700-D Parts

*Traction Unit - Model 30874  
Brakes*



Item No	R&R Part No.	OEM Part No.	Description	Qty Req	Order Quantity
42	<b>R232-24</b>	232-24, 232-35	Stem - Valve w/ Cap	2	
<b>Other Parts Available</b>					
70	<b>R100-3070-03</b>	100-3070-03	Brake Assy - LH	1	
71	<b>R100-3069-03</b>	100-3069-03	Brake Assy - RH	1	
72	<b>R340-4</b>	340-4	Hydraulic Fitting - Male Connector	1	
73	<b>R340-2</b>	340-2, 60-1920	Hydraulic Fitting - Striaght	2	
74	<b>R340-8</b>	340-8	Adapter	2	
75	<b>R340-148</b>	340-148	Fitting-Tee	2	
76	<b>R340-109</b>	340-109	Hydraulic Fitting - Run Tee	4	
77	<b>R237-42</b>	237-42, 31-4160	O-Ring	2	
78	<b>R237-58</b>	237-58	O-Ring	4	
79	<b>R237-79</b>	237-79	O-Ring	2	
80	<b>R340-65</b>	340-65	O-Ring	4	
81	<b>R237-30</b>	23-6320, 237-30	O-Ring - Seal	2	
82	<b>R237-22</b>	107-8844, 237-22, 237-78	O-Ring	4	
83	<b>R94-3088</b>	94-3088	Spring - Compression	2	
84	<b>R92-7530</b>	92-7530	Brake Cable Assy - LH	1	
85	<b>R92-7529</b>	92-7529	Brake Cable Assy - RH	1	

All original equipment manufacturers names and part numbers are used for identification purposes only, and we are in no way implying that our products are original equipment parts. Prices subject to change without notice.



# Replaces Toro Groundsmaster 4700-D Parts

*Traction Unit - Model 30874  
Brakes*



Item No	R&R Part No.	OEM Part No.	Description	Qty Req	Order Quantity
86	<b>R353-990</b>	353-990	Plug	2	
87	<b>R237-81</b>	237-81, 237.81, 327-81	O-Ring	2	
88	<b>R106-9888</b>	106-9888	Washer-Flat	4	
89	<b>R121-3100</b>	121-3100	Hyd Piston Motor Assy	2	

All original equipment manufacturers names and part numbers are used for identification purposes only, and we are in no way implying that our products are original equipment parts. Prices subject to change without notice.