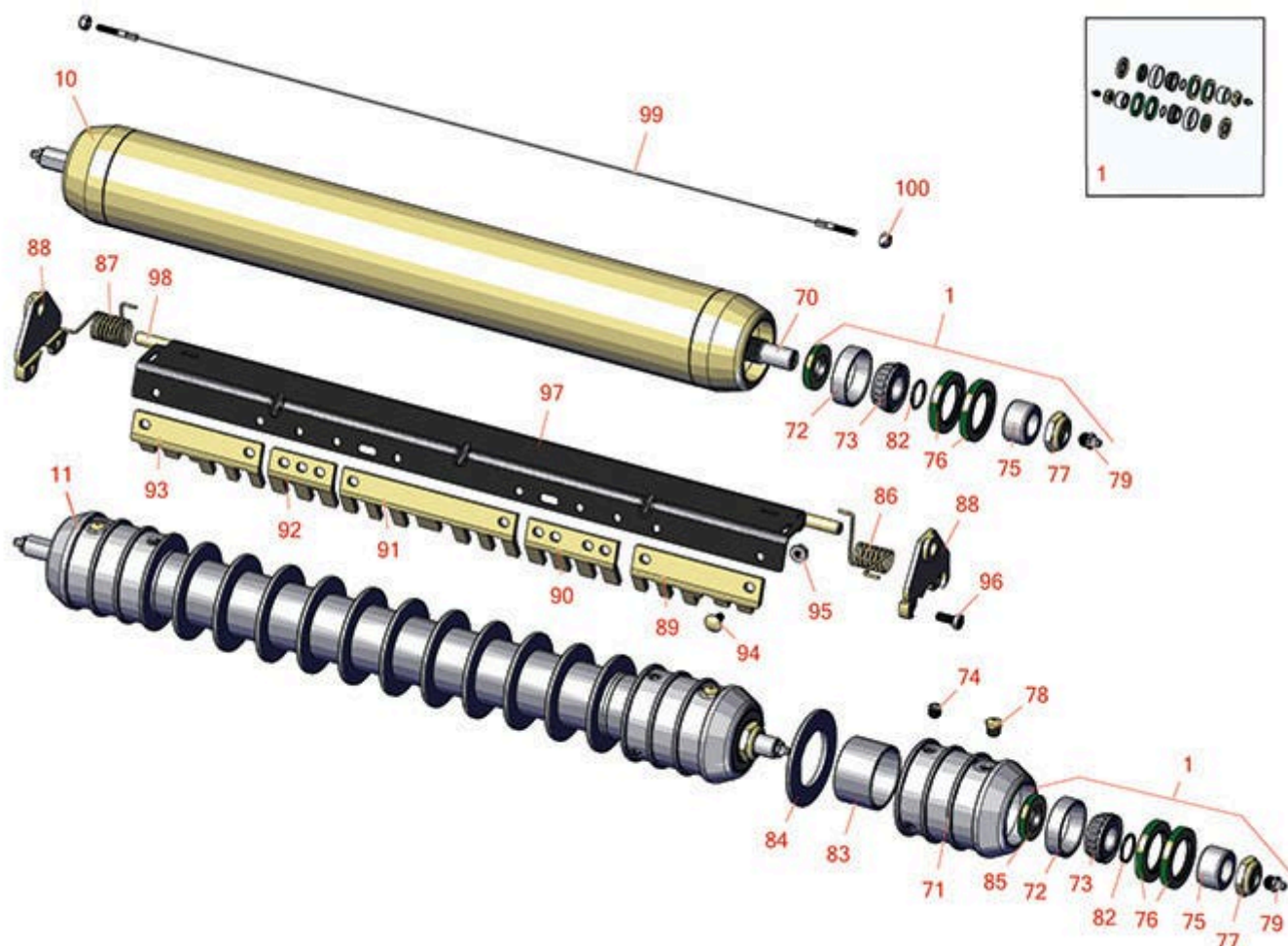




# Replaces John Deere 6500A E-Cut Reel Mower Parts

Cutting Unit  
Rollers



All original equipment manufacturers names and part numbers are used for identification purposes only, and we are in no way implying that our products are original equipment parts. Prices subject to change without notice.



# Replaces John Deere 6500A E-Cut Reel Mower Parts

Cutting Unit  
Rollers



| Item No | R&R Part No. | OEM Part No. | Description | Qty Req | Order Quantity |
|---------|--------------|--------------|-------------|---------|----------------|
|---------|--------------|--------------|-------------|---------|----------------|

## Overhaul Kits

|  |                  |          |                       |   |  |
|--|------------------|----------|-----------------------|---|--|
| 1  | <b>RAET10632</b> | AET10632 | Overhaul Kit - Roller | 1 |  |
| <i>Detail Description: Includes 4 ea: RET15755 Seal; 2 ea: R237-54 O-Ring, R253-122 Seal, R254-78 Bearing, R254-79 Cup, R3296-15 Locknut, R471219 Grease Zerk, RET15726 Sleeve, RET15756 Seal;</i> |                  |          |                       |   |  |

## Rollers

|   |                  |                      |                               |   |  |
|---|------------------|----------------------|-------------------------------|---|--|
| 10  | <b>RAET11263</b> | AET11263,<br>AMT2967 | Roller - Smooth Tubular Steel | 1 |  |
| <i>Detail Description: Constructed with a through shaft, this heavy duty roller uses greasable tapered bearings for extended life.:</i> |                  |                      |                               |   |  |

|   |                |                     |                                   |   |  |
|---|----------------|---------------------|-----------------------------------|---|--|
| 11  | <b>R500512</b> | AMT2966,<br>BM25317 | Roller - Grooved Repairable Steel | 1 |  |
| <i>Detail Description: Constructed with a through shaft and greasable ball bearings. This roller can be repaired by unscrewing the ends and replacing the series of washers and spacers.:</i> |                |                     |                                   |   |  |

## Other Parts Available

|    |                 |         |                         |   |  |
|----|-----------------|---------|-------------------------|---|--|
| 70 | <b>RET17515</b> | ET17515 | Shaft - Roller          | 1 |  |
| 71 | <b>R500511</b>  |         | Roller End - Threaded 3 | 2 |  |
| 72 | <b>R254-78</b>  | JD8188  | Tapered Bearing Cone    | 2 |  |
| 73 | <b>R254-79</b>  | JD8226  | Cup - Bearing           | 2 |  |

*Detail Description: Use R254-79M installation mandrel to properly install race.:*

|    |                 |                      |                                |   |  |
|----|-----------------|----------------------|--------------------------------|---|--|
| 74 | <b>R150691</b>  |                      | Screw - Set Nyloc 3/8-16 x 3/8 | 2 |  |
| 75 | <b>RET15726</b> | ET15726,<br>RET15726 | Sleeve - Wear Hardened         | 2 |  |
| 76 | <b>RET15755</b> | ET15755              | Seal - Oil                     | 4 |  |
| 77 | <b>R3296-15</b> | N101345              | Locknut - 3/4-16 Nylon Jam     | 2 |  |
| 78 | <b>R170714</b>  | E14814               | Fitting - Pressure Relief      | 2 |  |

All original equipment manufacturers names and part numbers are used for identification purposes only, and we are in no way implying that our products are original equipment parts. Prices subject to change without notice.



# Replaces John Deere 6500A E-Cut Reel Mower Parts

*Cutting Unit  
Rollers*



| Item No | R&R Part No. | OEM Part No.                            | Description                          | Qty Req | Order Quantity |
|---------|--------------|---|--------------------------------------|---------|----------------|
| 79      | R471219      | 471219,<br>471231,<br>JD7759,<br>JD7798 | Zerk - Grease                        | 2       |                |
| 82      | R237-54      | U46731,<br>U6731                        | O-Ring - Small                       | 2       |                |
| 83      | R150676      |   | Spacer - 2-3/4 Dia x 1-1/4 L         | 10      |                |
| 84      | R150673      |   | Washer - 3 Repairable Roller         | 11      |                |
| 85      | RET15756     | ET15756,<br>MT1739,<br>MT739            | Seal                                 | 2       |                |
| 86      | RET17630     | ET17630                                 | Spring - Torsion RH                  | 1       |                |
| 87      | RET17629     | ET17629                                 | Spring - Torsion LH                  | 1       |                |
| 88      | RMT2407      | MT2407                                  | Bracket - Roller Scraper             | 2       |                |
| 89      | RMT5159      | MT5159                                  | Scraper - Fits J.D. LH End           | 1       |                |
| 90      | RMT2341      | MT2341                                  | Section - Grooved Scraper 4<br>Tooth | 1       |                |
| 91      | RMT2340      | MT2340                                  | Scraper - Fits J.D. Center           | 1       |                |
| 92      | RMT2342      | MT2342                                  | Section - Grooved Scraper 3<br>Tooth | 1       |                |
| 93      | RMT5158      | MT5158                                  | Scraper - Fits J.D. RH End           | 1       |                |
| 94      | R03M7251     | 03M7251                                 | Bolt - Gr. Roller Scraper            | 10      |                |
| 95      | R14M7303     | 14M7303                                 | Nut - 6mm x 1.0 Flanged              | 10      |                |
| 96      | R21M7246     | 21M7246                                 | Screw                                | 4       |                |
| 97      | R500571      | MT2369                                  | Bar - Scraper                        | 1       |                |
| 98      | RET17757     | ET11757,<br>ET17757                     | Pin - Scraper                        | 1       |                |

All original equipment manufacturers names and part numbers are used for identification purposes only, and we are in no way implying that our products are original equipment parts. Prices subject to change without notice.



# Replaces John Deere 6500A E-Cut Reel Mower Parts

*Cutting Unit  
Rollers*



| Item No | R&R Part No. | OEM Part No.       | Description                   | Qty Req | Order Quantity |
|---------|--------------|--------------------|-------------------------------|---------|----------------|
| 99      | RTCA19566    | TCA19566           | Cable - Smooth Roller Scraper | 1       |                |
| 100     | RU45916      | 14M7298,<br>U45916 | Locknut - 10-24 ESNA          | 2       |                |

All original equipment manufacturers names and part numbers are used for identification purposes only, and we are in no way implying that our products are original equipment parts. Prices subject to change without notice.