

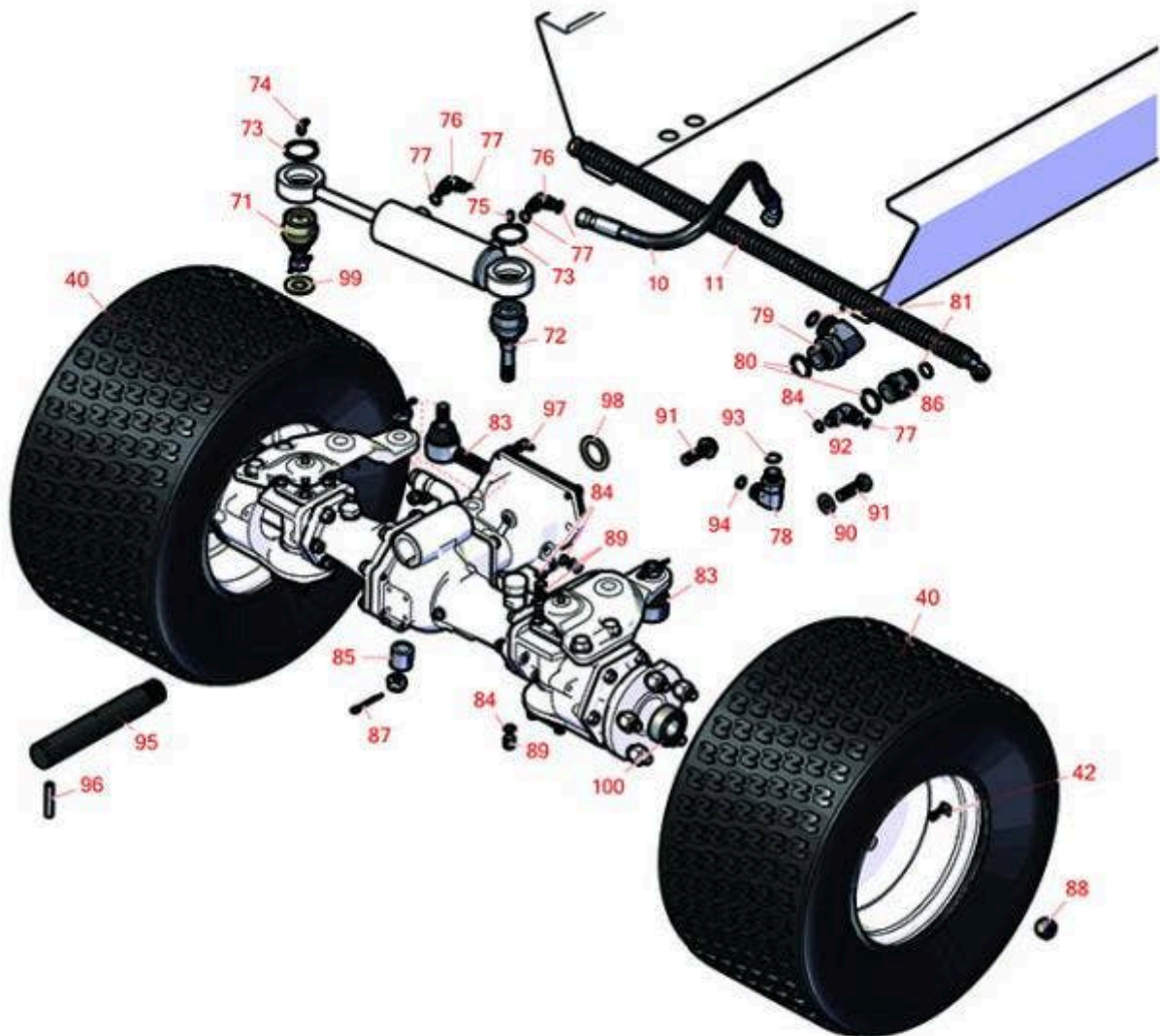


Replaces Toro Groundsmaster 4500-D

Parts

Traction Unit - Model 30885

Rear Axle



FOR MORE TIRE SELECTIONS PLEASE
CLICK ON THE TIRE ICON ABOVE.

All original equipment manufacturers names and part numbers are used for identification purposes only, and we are in no way implying that our products are original equipment parts. Prices subject to change without notice.



Replaces Toro Groundsmaster 4500-D Parts

Traction Unit - Model 30885
Rear Axle



Item No	R&R Part No.	OEM Part No.	Description	Qty Req	Order Quantity
---------	--------------	--------------	-------------	---------	----------------

Hoses

10	R92-7539	92-7539	Hydraulic Hose Assy	1	
11	R125-4560	125-4560	Hose Assy	1	

Tires

40	RCT50D362		Tire - 20x10.00-10 Nhs (4 Ply) Carlisle Turf Trac R/S	2	
----	------------------	--	----------------------------------------------------------	---	--

Detail Description: The Turf Trac R/S tire offers all-around best performance in our residential product line. Applications include grounds care equipment, zero turn mowers and utility vehicles.:

40	RCT511116	115-1572	Tire - 20x10.00-10 Nhs (4 Ply) Carlisle Turf Saver	2	
42	R232-27	232-27, 232-31	Stem - Valve w/ Cap	2	

Other Parts Available

71	R106-6774	106-6774, 92-5838, 92-5838-01	Ball Joint	1	
72	R100-3795	100-3795	Ball Joint	1	
73	R32151-104	32151-104	Ring - Retaining, Ex	2	
74	R302-60	302-60	Zerk - Grease 90 Deg.	1	

All original equipment manufacturers names and part numbers are used for identification purposes only, and we are in no way implying that our products are original equipment parts. Prices subject to change without notice.



Replaces Toro Groundsmaster 4500-D Parts

*Traction Unit - Model 30885
Rear Axle*



Item No	R&R Part No.	OEM Part No.	Description	Qty Req	Order Quantity
75	R302-5	21-6010, 302-11, 302-37, 302-47, 302-5, 302-57, 302-58, 302-6, 31-0300, 32-9660, 60-0800, 62-3880, 92-4181	Fitting - Grease	1	
76	R340-97	340-97	Hydraulic Fitting - 90 Deg	2	
77	R237-22	107-8844, 237-22, 237-78	O-Ring	5	
78	R340-98	340-98	Hydraulic Fitting	1	
79	R340-142	340-142, 95-1692	Hydraulic Fitting - 90 Deg	1	
80	R237-81	237-81, 237.81, 327-81	O-Ring	2	
81	R237-58	237-58	O-Ring	2	
83	R106-1113	100-3852, 106-1113	Tie Rod End Assy RH Thread	2	
84	R237-42	237-42, 31-4160	O-Ring	4	
85	R100-3796	100-3796	Spacer - Ball Joint	1	
86	R340-9	340-9	Fitting - Straight Connector	1	

All original equipment manufacturers names and part numbers are used for identification purposes only, and we are in no way implying that our products are original equipment parts. Prices subject to change without notice.



Replaces Toro Groundsmaster 4500-D Parts

*Traction Unit - Model 30885
Rear Axle*



Item No	R&R Part No.	OEM Part No.	Description	Qty Req	Order Quantity
87	R3272-11	01-151-0010, 01-151-0040, 28-18-D, 28-28-D, 3211-72, 3272-11	Pin - Cotter	2	
88	R93-5268	93-5268	Nut - M12-1.5 Wheel	10	
89	R353-989	353-989	Plug - Hex - Hollow	3	
90	R3256-26	01-166-0540, 01-166-0820, 17-2530, 24-13-BD, 30-8570, 3256-26, 356206, 48-9390	Washer - 1/2 in	2	
91	R325-7	01-150-0380, 01-178-0814, 3226-3, 325-7, 48-9490	Bolt - 1/2-13 x 1 3/4 Hex HD Gr 5	2	
92	R340-77	340-100, 340-77, 95-7889	Hydraulic Fitting	1	
93	R237-79	237-79	O-Ring	1	
94	R237-30	23-6320, 237-30	O-Ring - Seal	1	
95	R115-9142	115-9142	Pin - Rear Axle	1	
96	R32121-110	32121-110	Roll Pin - Slotted	1	
97	R323016	302-33, 323016	1/8"-NPT 90 Degree Grease Fitting	1	
98	R92-1765	92-1765	Washer - Thrust	1	
99	R92-5836	92-5836	Flat Washer - Hardened	1	

All original equipment manufacturers names and part numbers are used for identification purposes only, and we are in no way implying that our products are original equipment parts. Prices subject to change without notice.



Replaces Toro Groundsmaster 4500-D Parts

*Traction Unit - Model 30885
Rear Axle*



Item No	R&R Part No.	OEM Part No.	Description	Qty Req	Order Quantity
100	R99-7534	99-7534	Bearing - Double Row Ball	2	

All original equipment manufacturers names and part numbers are used for identification purposes only, and we are in no way implying that our products are original equipment parts. Prices subject to change without notice.