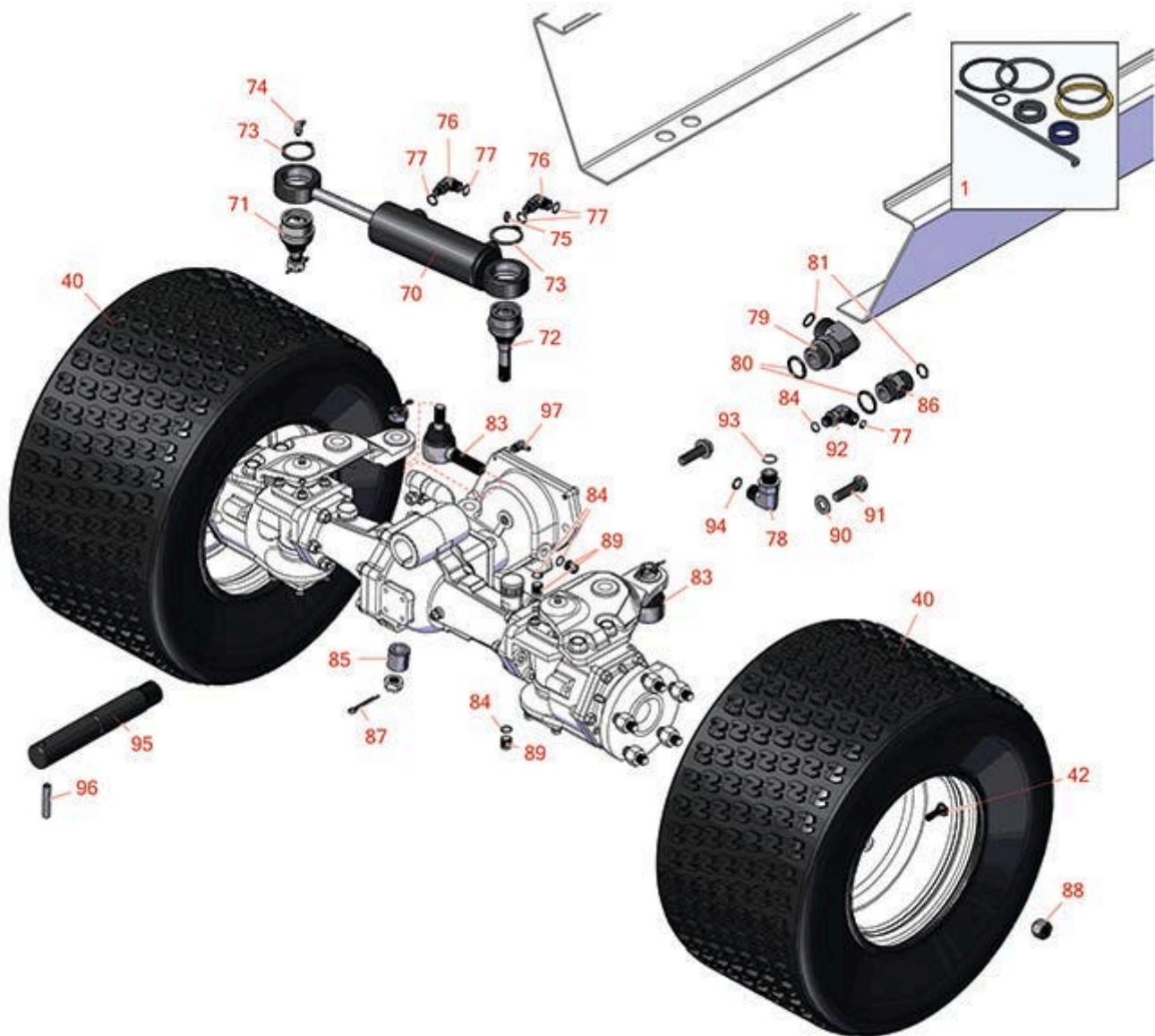




# Replaces Toro Groundsmaster 4500-D Parts

*Traction Unit with Yanmar Engine - Model 30881A*  
*Rear Axle*



FOR MORE TIRE SELECTIONS PLEASE  
CLICK ON THE TIRE ICON ABOVE.

All original equipment manufacturers names and part numbers are used for identification purposes only, and we are in no way implying that our products are original equipment parts. Prices subject to change without notice.



# Replaces Toro Groundsmaster 4500-D Parts

Traction Unit with Yanmar Engine - Model 30881A  
Rear Axle



Item No	R&R Part No.	OEM Part No.	Description	Qty Req	Order Quantity
---------	--------------	--------------	-------------	---------	----------------

## Overhaul Kits

1	R107-0245	107-0245	Seal Kit - Fits R105-0775 Hyd Cyl	1	
---	-----------	----------	-----------------------------------	---	--

## Tires

40	RCT50D362		Tire - 20x10.00-10 Nhs (4 Ply) Carlisle Turf Trac R/S	2	
----	-----------	--	--	---	--

*Detail Description: The Turf Trac R/S tire offers all-around best performance in our residential product line. Applications include grounds care equipment, zero turn mowers and utility vehicles.:*

42	R232-27	232-27, 232-31	Stem - Valve w/ Cap	2	
----	---------	-------------------	---------------------	---	--

## Other Parts Available

70	R107-1976	107-1976	Cylinder - Steering	1	
----	-----------	----------	---------------------	---	--

71	R106-6774	106-6774, 92-5838, 92-5838-01	Ball Joint	1	
----	-----------	-------------------------------------	------------	---	--

72	R100-3795	100-3795	Ball Joint	1	
----	-----------	----------	------------	---	--

73	R32151-104	32151-104	Ring - Retaining, Ex	2	
----	------------	-----------	----------------------	---	--

74	R302-60	302-60	Zerk - Grease 90 Deg.	1	
----	---------	--------	-----------------------	---	--

75	R302-5	21-6010, 302-11, 302-37, 302-47, 302-5, 302-57, 302-58, 302-6, 31-0300, 32-9660, 60-0800, 62-3880, 92-4181	Fitting - Grease	1	
----	--------	--	------------------	---	--

76	R340-97	340-97	Hydraulic Fitting - 90 Deg	2	
----	---------	--------	----------------------------	---	--

All original equipment manufacturers names and part numbers are used for identification purposes only, and we are in no way implying that our products are original equipment parts. Prices subject to change without notice.



# Replaces Toro Groundsmaster 4500-D Parts

*Traction Unit with Yanmar Engine - Model 30881A  
Rear Axle*



Item No	R&R Part No.	OEM Part No.	Description	Qty Req	Order Quantity
77	R237-22	107-8844, 237-22, 237-78	O-Ring	5	
78	R340-98	340-98	Hydraulic Fitting	1	
79	R340-142	340-142, 95-1692	Hydraulic Fitting - 90 Deg	1	
80	R237-81	237-81, 237.81, 327-81	O-Ring	2	
81	R237-58	237-58	O-Ring	2	
83	R106-1113	100-3852, 106-1113	Tie Rod End Assy RH Thread	2	
84	R237-42	237-42, 31-4160	O-Ring	4	
85	R100-3796	100-3796	Spacer - Ball Joint	1	
86	R340-9	340-9	Fitting - Straight Connector	1	
87	R3272-11	01-151-0010, 01-151-0040, 28-18-D, 28-28-D, 3211-72, 3272-11	Pin - Cotter	2	
88	R93-5268	93-5268	Nut - M12-1.5 Wheel	10	
89	R353-989	353-989	Plug - Hex - Hollow	3	
90	R3256-26	01-166-0540, 01-166-0820, 17-2530, 24-13-BD, 30-8570, 3256-26, 356206, 48-9390	Washer - 1/2 in	2	

All original equipment manufacturers names and part numbers are used for identification purposes only, and we are in no way implying that our products are original equipment parts. Prices subject to change without notice.



# Replaces Toro Groundsmaster 4500-D Parts

*Traction Unit with Yanmar Engine - Model 30881A  
Rear Axle*



Item No	R&R Part No.	OEM Part No.	Description	Qty Req	Order Quantity
91	R325-7	01-150-0380, 01-178-0814, 3226-3, 325-7, 48-9490	Bolt - 1/2-13 x 1 3/4 Hex HD Gr 5	2	
92	R340-77	340-100, 340-77, 95-7889	Hydraulic Fitting	1	
93	R237-79	237-79	O-Ring	1	
94	R237-30	23-6320, 237-30	O-Ring - Seal	1	
95	R115-9142	115-9142	Pin - Rear Axle	1	
96	R32121-110	32121-110	Roll Pin - Slotted	1	
97	R323016	302-33, 323016	1/8"-NPT 90 Degree Grease Fitting	1	

All original equipment manufacturers names and part numbers are used for identification purposes only, and we are in no way implying that our products are original equipment parts. Prices subject to change without notice.